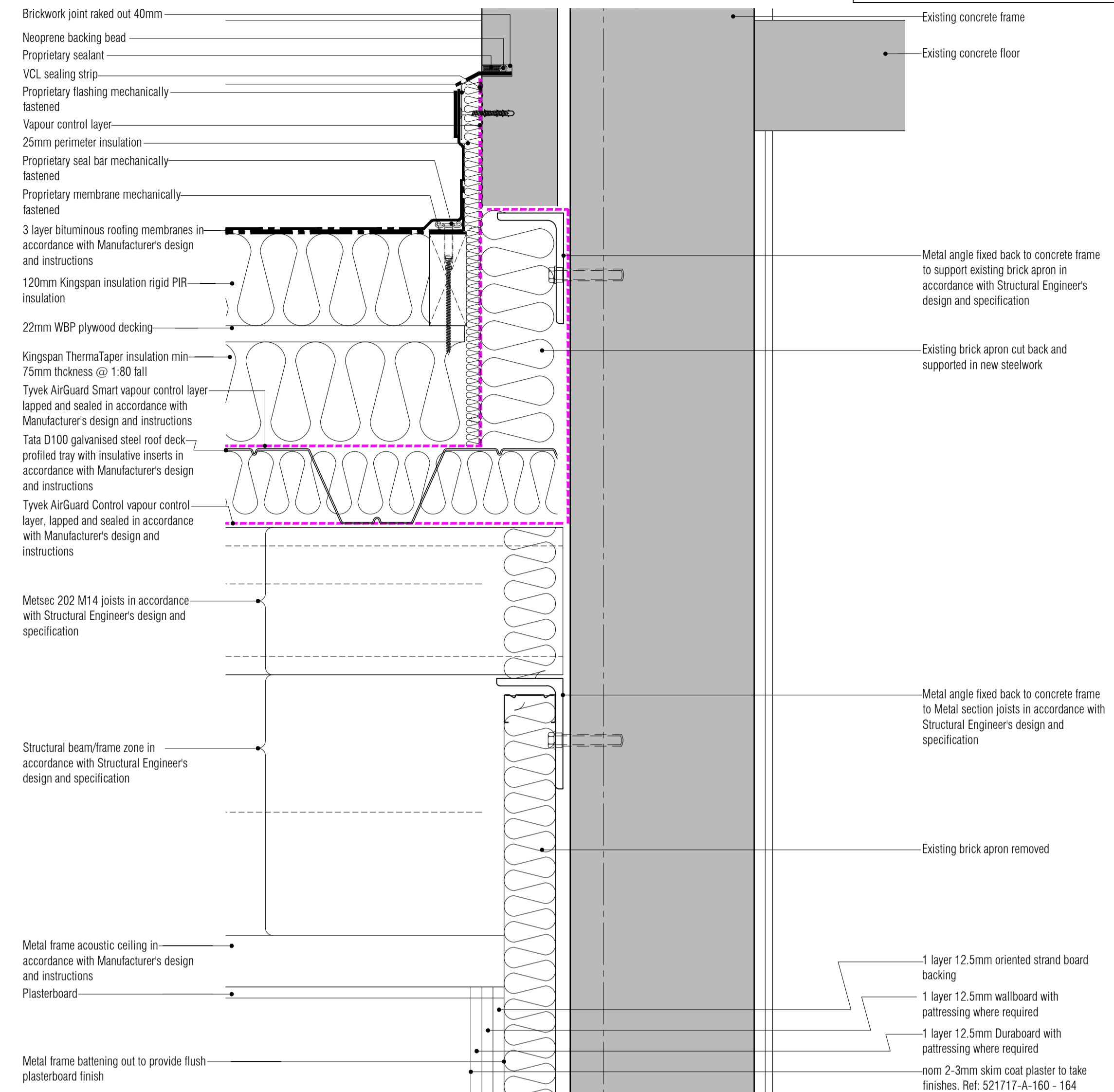
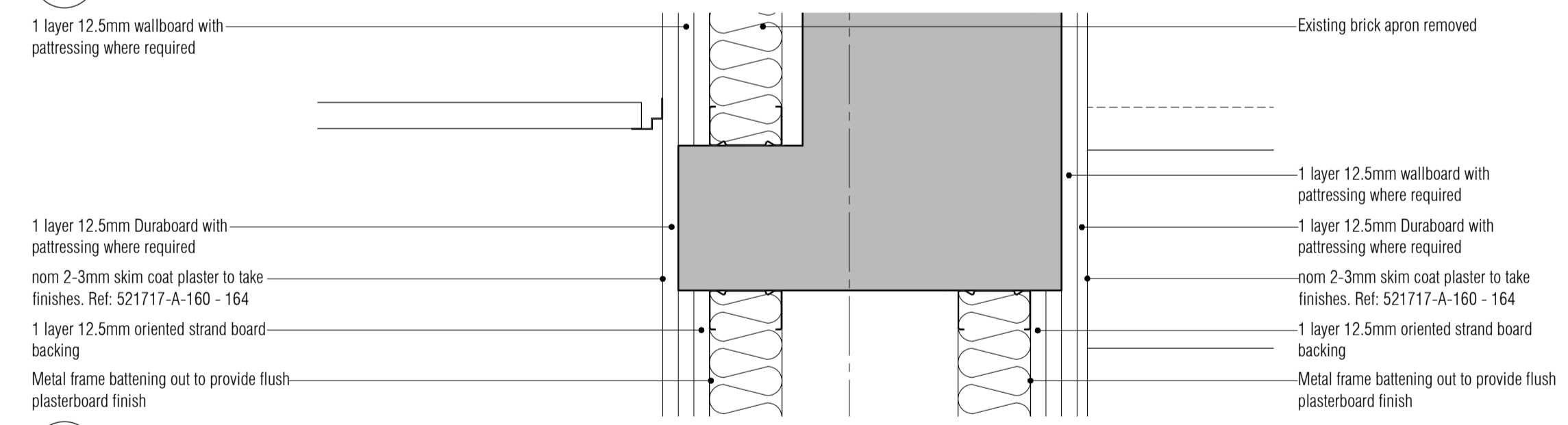


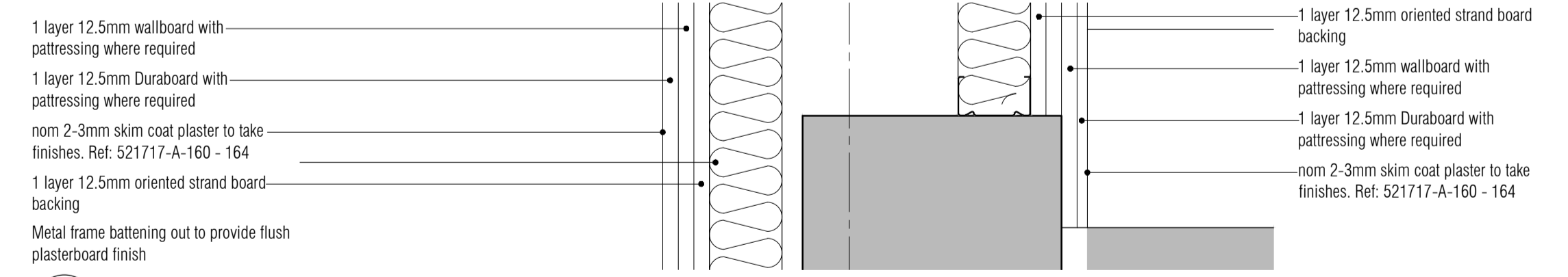
01 External Cladding Wall Ventilation Duct Penetration Detail
Scale: 1:5



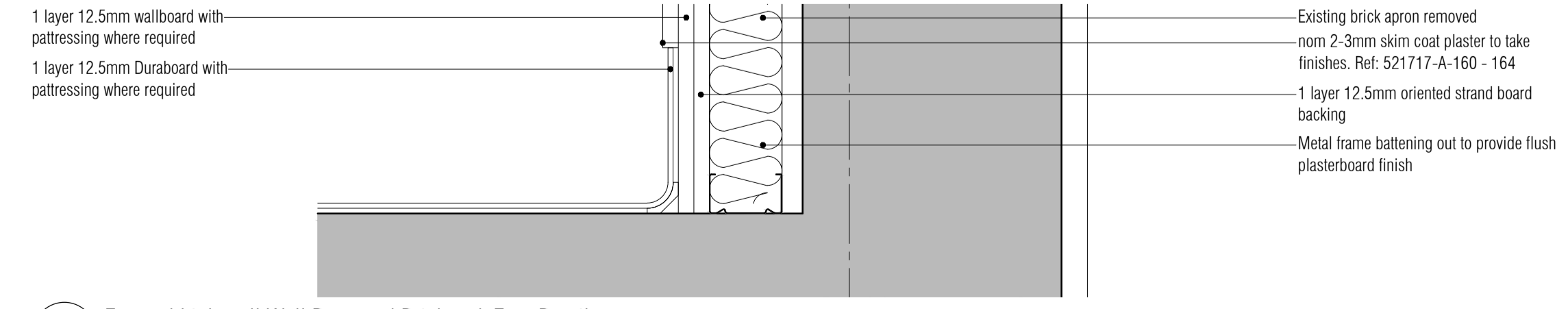
02 External Lightwell Wall Section 02 New Roof / Existing Wall Abutment Detail
Scale: 1:5



03 External Lightwell Wall Removed Window Infill Head Detail
Scale: 1:5



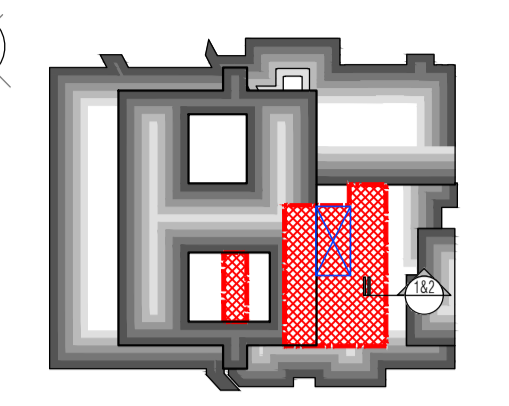
04 External Lightwell Wall Removed Window Infill Cill Detail
Scale: 1:5



05 External Lightwell Wall Removed Brickwork Foot Detail
Scale: 1:5

NB: All levels are approximate and are subject to further site investigation prior to construction. All discrepancies to be reported to FCG immediately

NOTES: Do not scale this drawing. All dimensions to be checked on site prior to commencement or manufacture. Key Plan (nts)



PRELIMINARY ISSUE

Rev	Date	By	CHK	Comment
P1	04.11.14	JM	AGC	Preliminary Issue for Information

BRINGING IDEAS TO LIFE

FRANKHAM

Frankham Consultancy Group Limited
21 Perryman Road
Haywards Heath RH16 3TP
t 01444 444000 f 01444 455642
enquire@frankham.com
www.frankham.com

Client
St George's Healthcare NHS Trust

Project Title
General Intensive Care Unit Extension
St. James Wing
St. Georges Hospital
London

Drawing Title
External Wall
Ventilation Duct
Penetration
Detail

Drawn by: RKC	Scale: 1:5@A1	Date: 27.01.14
Designed by: FCG	Checked by: MDK	Approved by: AGC
File Ref.: X:\FRANKHAM\2-2012\111\02\ARCH\008.DWG 521717-A-302-295 - 299\15111	20.06.15.15:11.02	
Drawing No. 521717-A-507	Rev. P1	

NB: All information based on supplied third party survey information. All discrepancies to be reported to FCG immediately upon discovery.

All Mechanical & Electrical and Structural information shown indicative only. Please refer to Mechanical & Electrical and Structural documentation.