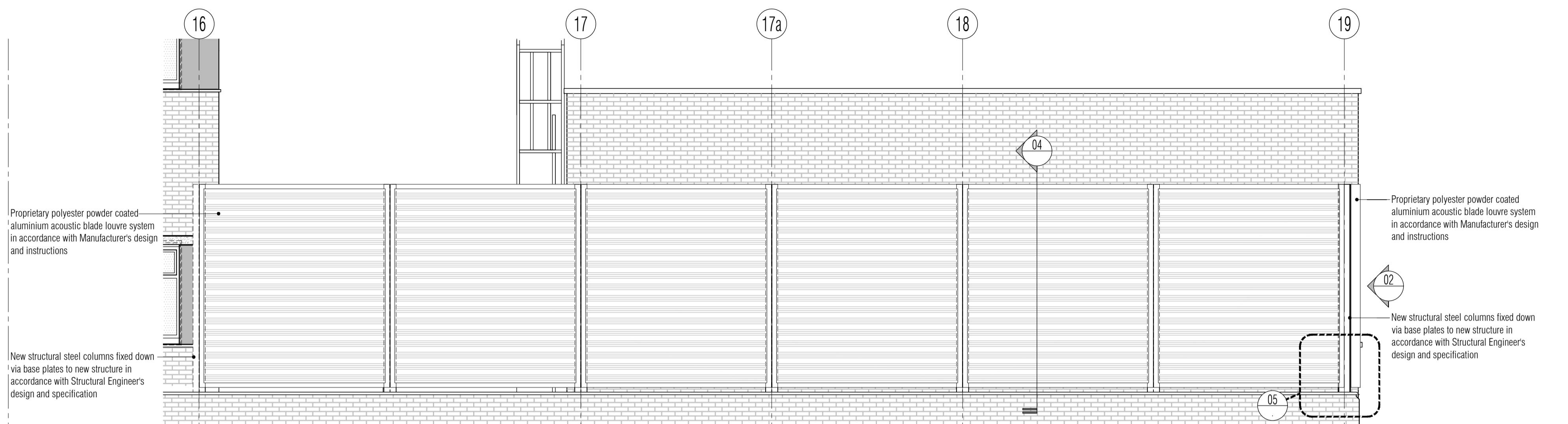
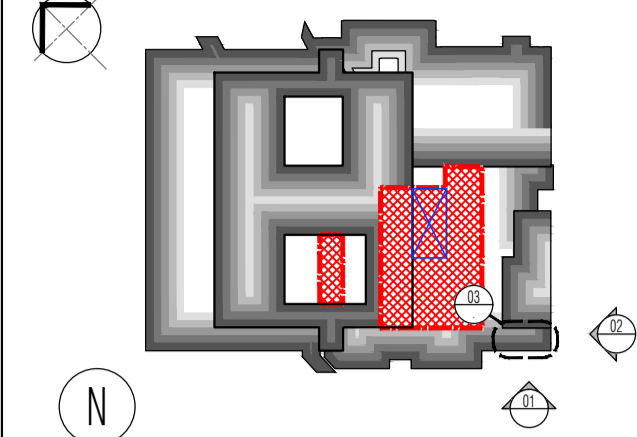
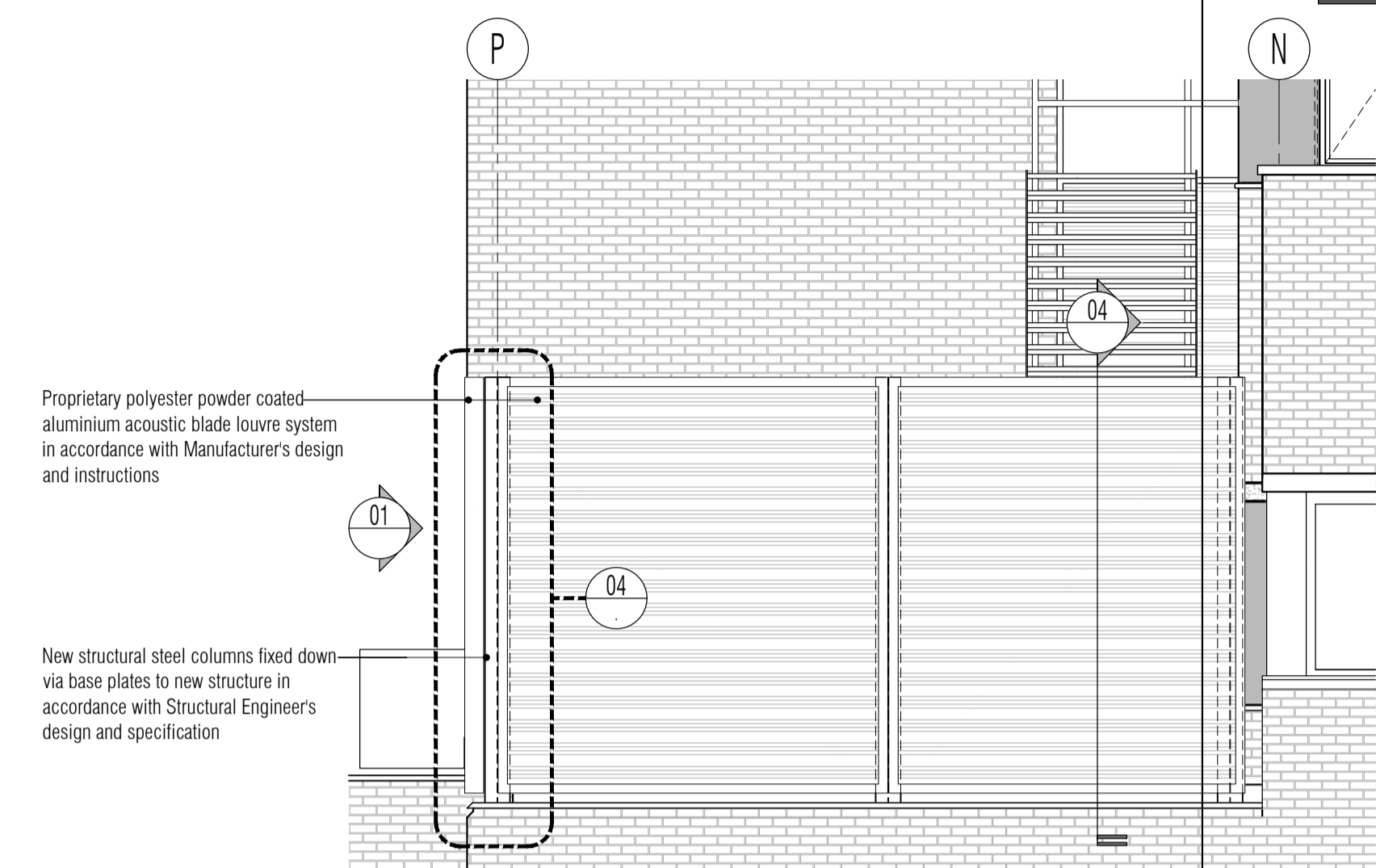


NB: All levels are approximate and are subject to further site investigation prior to construction. All discrepancies to be reported to FCG immediately

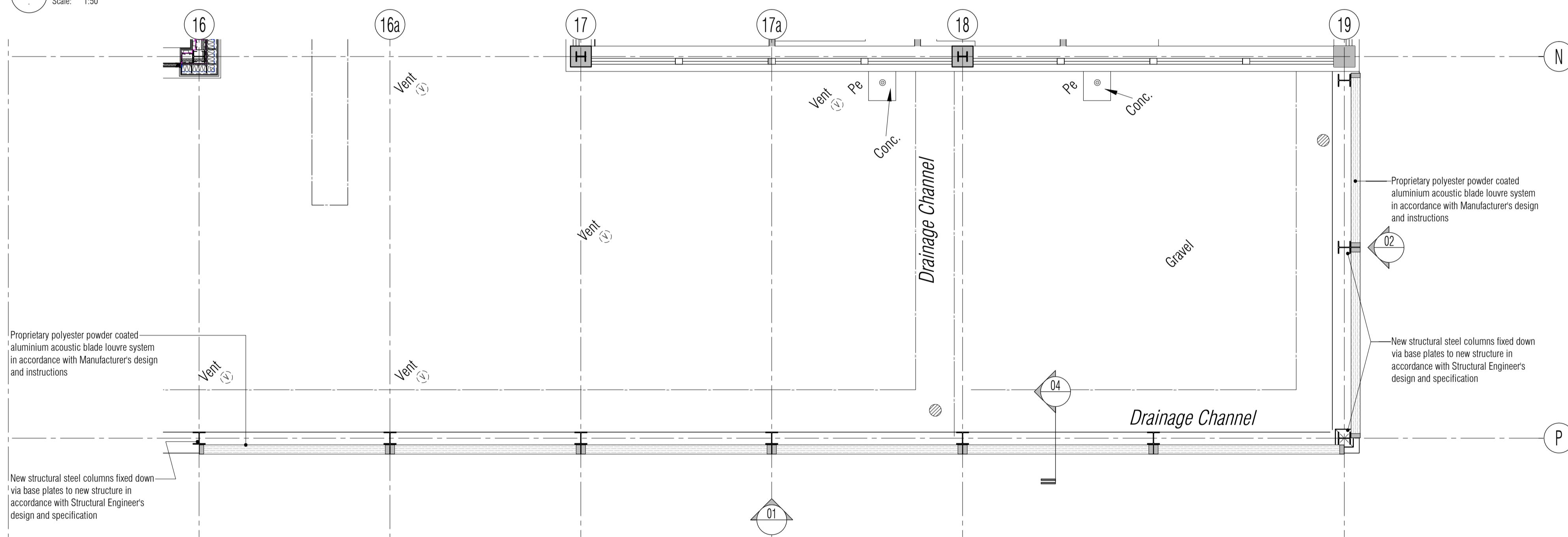
NOTES: Do not scale this drawing. All dimensions to be checked on site prior to commencement or manufacture.
Key Plan (nts)



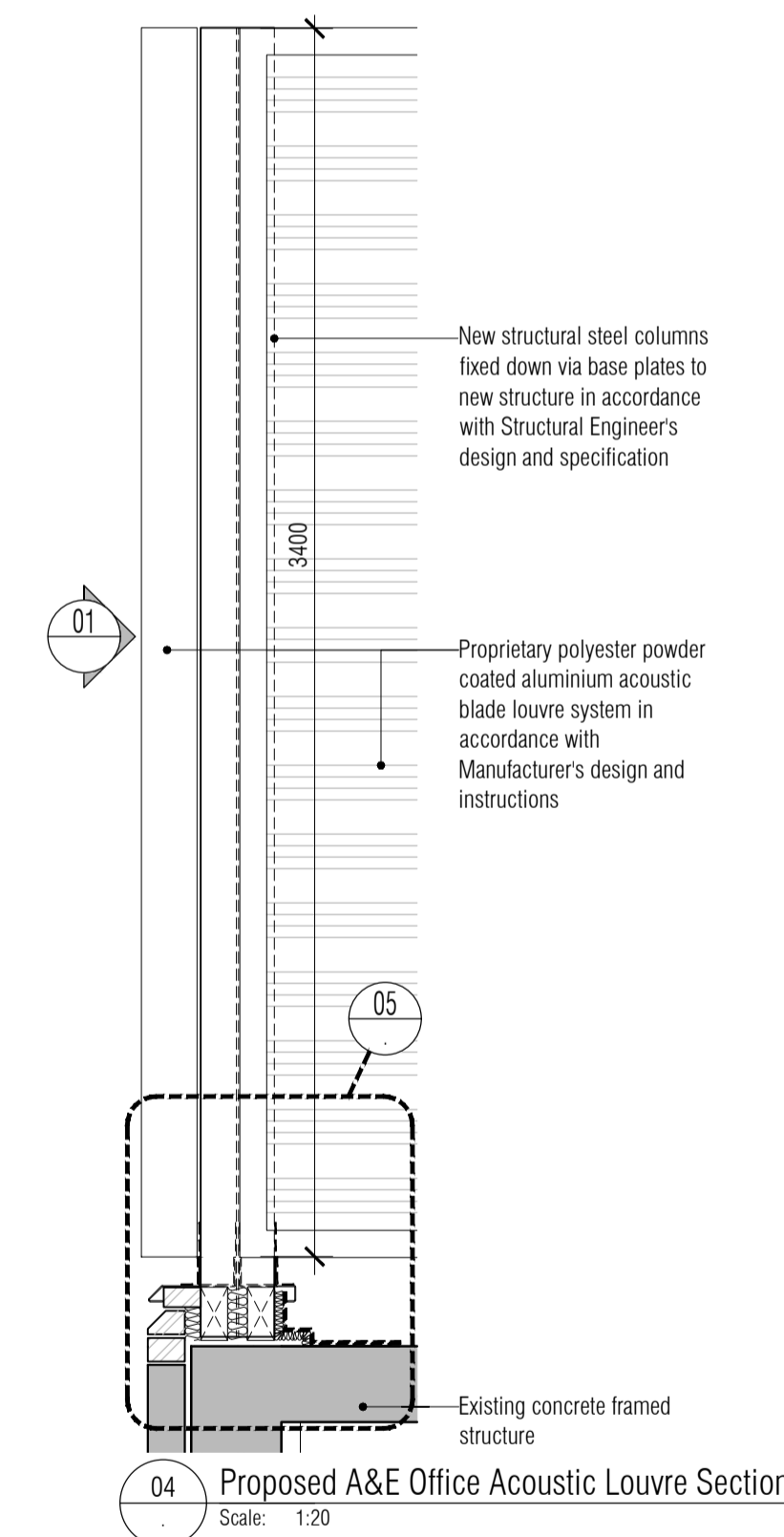
01 Proposed A&E Office Acoustic Louvre South Sectional Elevation
Scale: 1:50



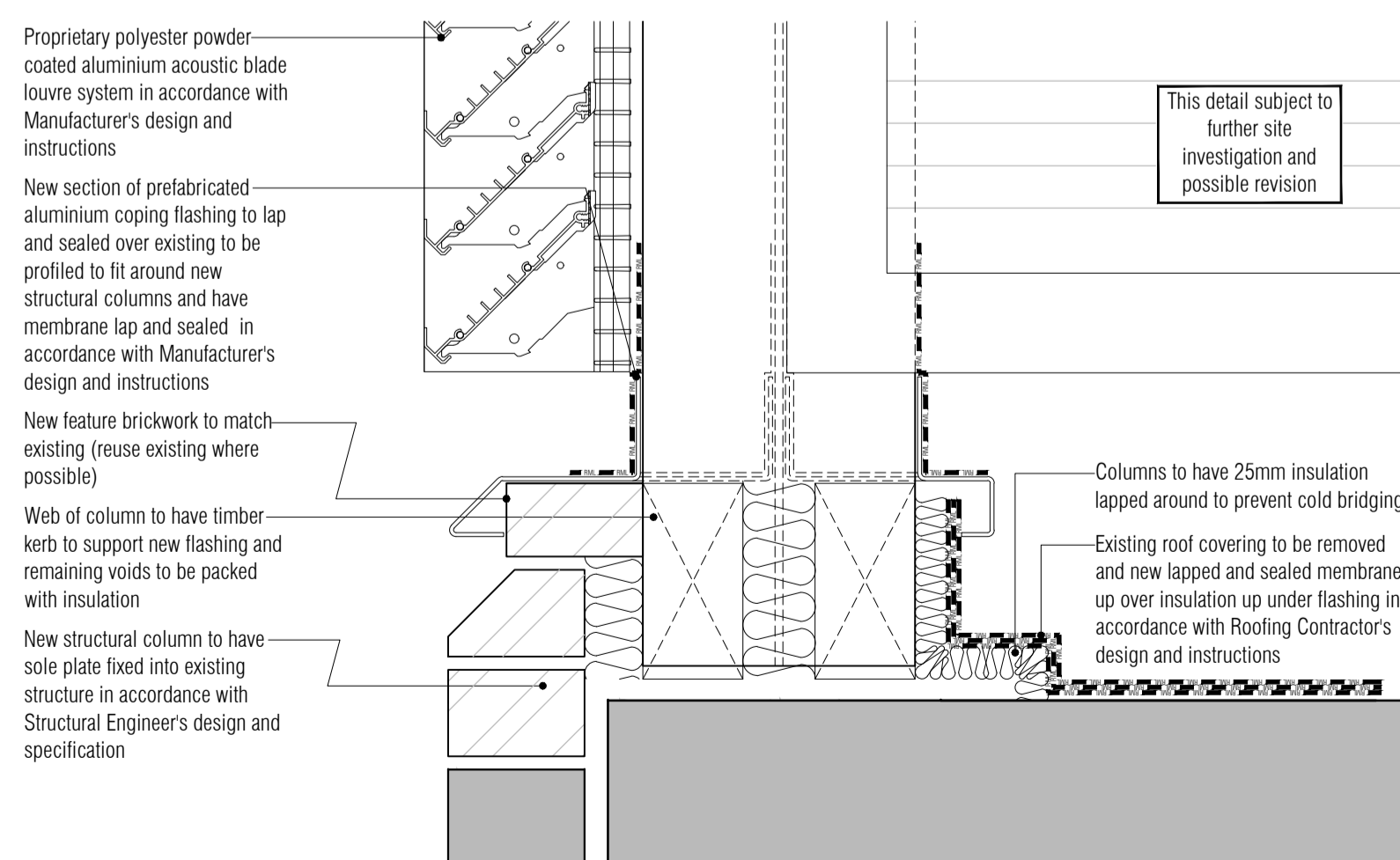
02 Proposed A&E Office Acoustic Louvre East Sectional Elevation
Scale: 1:50



03 Proposed A&E Office Acoustic Louvre Plan
Scale: 1:50



04 Proposed A&E Office Acoustic Louvre Section
Scale: 1:20



05 Proposed A&E Office Acoustic Louvre Structural Column Fixing Detail
Scale: 1:5

PRELIMINARY ISSUE

All details referenced in call outs supercede general arrangement or larger depictions.

P2	04.11.14	RKC	AJM	Preliminary Issue for Information
P1	21.01.14	JM	AGC	Preliminary Issue for Information
Rev	Date	By	CHK	Comment

BRINGING IDEAS TO LIFE

FRANKHAM

Frankham Consultancy Group Limited
21 Perrymount Road
Haywards Heath RH16 3TP
t 01444 444900 f 01444 455642
enquiry@frankham.com
www.frankham.com

Client

St George's Healthcare NHS Trust

Project Title

General Intensive Care Unit Extension
St. James Wing
St. Georges Hospital
London

Drawing Title

Proposed
A&E Offices Acoustic Louvre
Details

Drawn by: RKC	Scale: 1:50, 20.5@A1	Date: 16.01.14
Designed by: FCG	Checked by: MDK	Approved by: AGC

File Ref.: X:\FRANKHAM\2-2012\111\02\A&E\04\05.DWG
20.06.15:15:12:21

Drawing No.
521717-A-510

Rev.
P2

NB: All information based on supplied third party survey information. All discrepancies to be reported to FCG immediately upon discovery.

All Mechanical & Electrical and Structural information shown indicative only. Please refer to Mechanical & Electrical and Structural documentation.