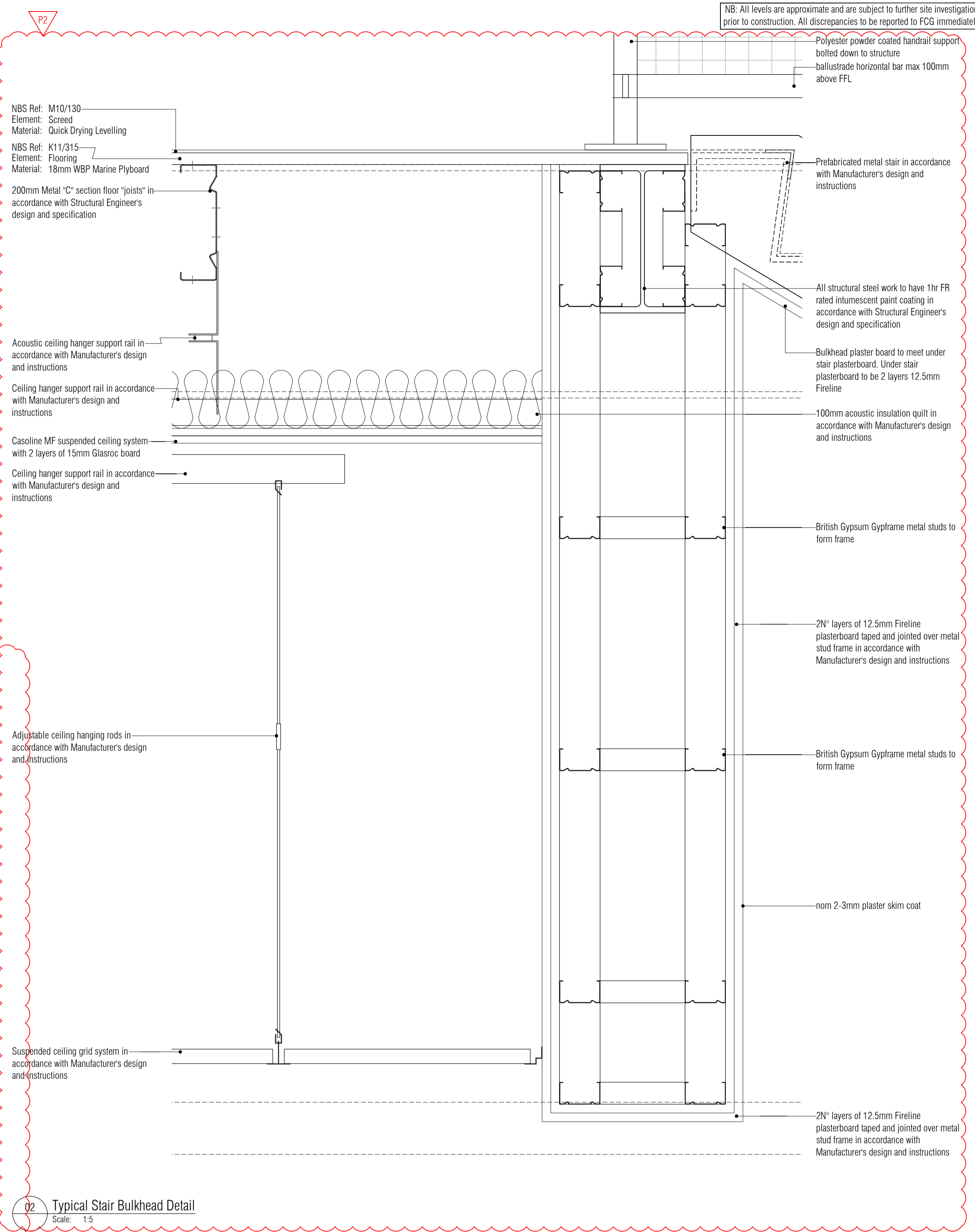


01 Typical Sunpipe Roof Light Detail  
Scale: 1:5

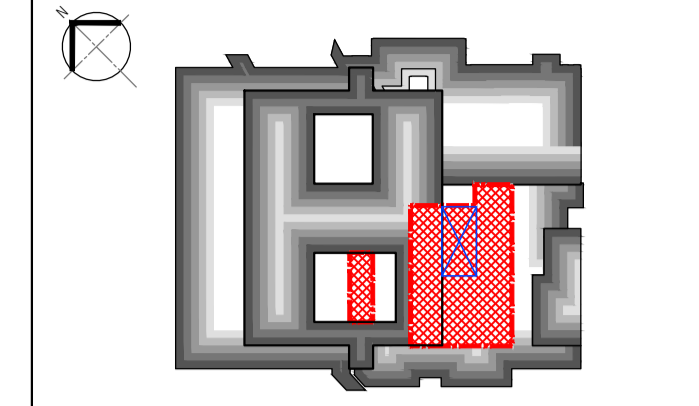
NB: All information based on supplied third party survey information. All discrepancies to be reported to FCG immediately upon discovery.



02 Typical Stair Bulkhead Detail  
Scale: 1:5

All Mechanical & Electrical and Structural information shown indicative only. Please refer to Mechanical & Electrical and Structural documentation.

NOTES: Do not scale this drawing. All dimensions to be checked on site prior to commencement or manufacture.



**PRELIMINARY ISSUE**

All details referenced in call outs supersede general arrangement or larger depictions.

Rev	Date	By	CHK	Comment
P2	15.06.20	JM	AGC	Gen revs
P1	21.01.14	JM	AGC	Preliminary Issue for Information

**BRINGING IDEAS TO LIFE**

**FRANKHAM**

Frankham Consultancy Group Limited  
21 Perrymount Road  
Haywards Heath RH16 3TP  
t 01444 444000 f 01444 455642  
enquire@frankham.com  
www.frankham.com

Client  
**St George's Healthcare NHS Trust**

Project Title  
General Intensive Care Unit Extension  
St. James Wing  
St. Georges Hospital  
London

Drawing Title  
Proposed  
Roof  
Details

Drawn by: RKC	Scale: 1:5@A1	Date: 08.01.14
Designed by: FCG	Checked by: MDK	Approved by: AGC

File Ref: X:\FRANKHAM\2-2012\111\02\ARCH\030-001- 521717-A-535-005 - 2009102018	20.06.15.15.36.02
Drawing No. 521717-A-535	Rev. P2