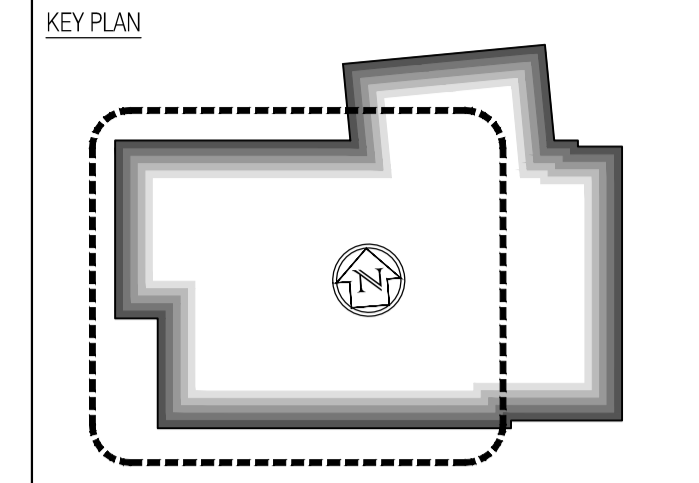


NOTES: Do not scale this drawing. All dimensions to be checked on site prior to commencement or manufacture.



Suspended Ceiling Types Key

NOTE: Where nothing shown assume painted concrete soffit as M60/150A.

	Type A Corridors Ecophon Focus A K40/115A
	Type B WC/Cleaner's Store Ecophon Hygiene Performance A K40/120
	Type C Classrooms Ecophon Combison Duo A K40/115B
	Type D Plasterboard finish K10/225
	Type E Perforated Plasterboard finish K10/225A
	Type F Pressed metal trim to under-side of suspended external walls H72/480
	Type G Insulated soffit-liner to external under-crofts K10/246

ISSUED FOR CONSTRUCTION

Rev	Date	By	Clk	Comment
B	11.10.10	RKC	CJ	Apollo Issue - Final Coordination by Apollo
A	17.08.10	RKC	CJ	General revisions

BRINGING IDEAS TO LIFE

FRANKHAM

Frankham Consultancy Group Limited
 21 Pymms Road
 Hayward Heath RH16 3TP
 t 01444 444900 f 01444 455642
 enquiry@frankham.com
 www.frankham.com

Client	
Project Title	Woodside Inclusive Learning Campus
Drawing Title	Reflected Ceiling Plan Ground Floor Block W

Drawn by: RKC	Scale: 1:50@A1	Date: 03.06.10
Designed by: FCG	Checked by: CJ	Approved by: AC
File Ref.: 0208020206-4002020206-BLOCK W-REFLECTED CEILING PLAN AND GA 222586-AW-112-02 - REV 04 23/11/10		14.04.23 14.15.53
Drawing No. 222586-AW-110	Rev. B	

For continuation, refer to dwg: 222586-AW-111