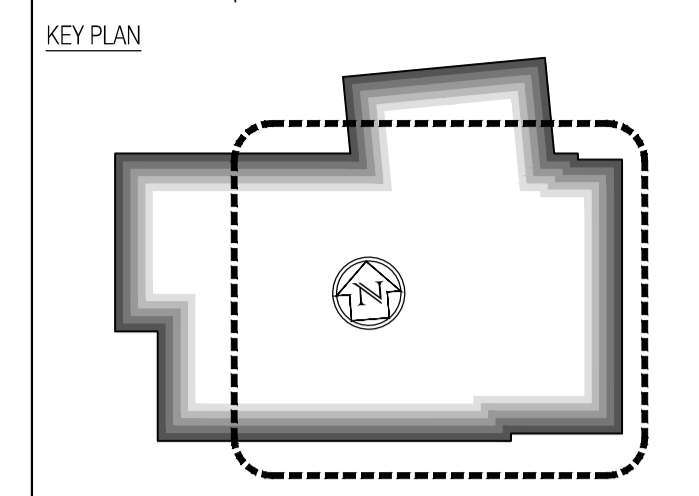


For continuation, refer to dwg: 222586-AW-112



NOTES: Do not scale this drawing. All dimensions to be checked on site prior to commencement or manufacture.



- Suspended Ceiling Types Key
NOTE: Where nothing shown assume painted concrete soffit as M60/150A.
- Type A Corridors Ecophon Focus A K40/115A
 - Type B WC/Cleaner's Store Ecophon Hygiene Performance A K40/120
 - Type C Classrooms Ecophon Combison Duo A K40/115B
 - Type D Plasterboard finish K10/225
 - Type E Perforated Plasterboard finish K10/225A
 - Type F Pressed metal trim to under-side of suspended external walls H72/480
 - Type G Insulated soffit-liner to external under-crofts K10/246

ISSUED FOR CONSTRUCTION

Rev	Date	By	Clk	Comment
B	11.10.10	RKC	CJ	Apollo Issue - Final Coordination by Apollo
A	17.08.10	RKC	CJ	Gen update

BRINGING IDEAS TO LIFE

FRANKHAM

Frankham Consultancy Group Limited
21 Parrymount Road
Haywards Heath, RH16 3TP
t 01444 444900 f 01444 455642
enquire@frankham.com
www.frankham.com

Client

Project Title

Woodside
Inclusive Learning Campus

Drawing Title

Reflected Ceiling Plan
Ground Floor
Block W

Drawn by: RKC	Scale: 1:50@A1	Date: 03.06.10
Designed by: FCG	Checked by: CJ	Approved by: AC

File Ref.: 0208032706-400282818-000-ARCH-161-REFL-CEILING-PLAN-AND-GA-222586-AW-111-DWG - REV 03-14-02-10-08	14/04/23 14:16:02
Drawing No. 222586-AW-111	Rev. B

For continuation, refer to dwg: 222586-AW-110