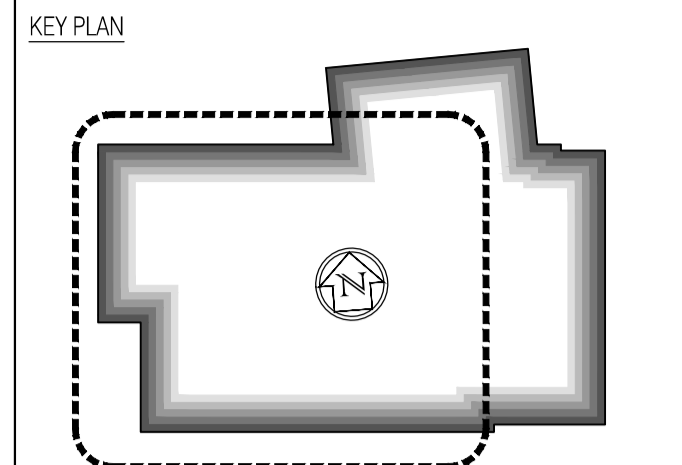




NOTES: Do not scale this drawing. All dimensions to be checked on site prior to commencement or manufacture.



Suspended Ceiling Types Key

NOTE: Where nothing shown assume painted concrete soffit as M60/150A.

	Type A Corridors Ecophon Focus A K40/115A
	Type B WC/Cleaner's Store Ecophon Hygiene Performance A K40/120
	Type C Classrooms Ecophon Combison Duo A K40/115B
	Type D Plasterboard finish K10/225
	Type E Perforated Plasterboard finish K10/225A
	Type F Pressed metal trim to under-side of suspended external walls H72/480
	Type G Insulated soffit-liner to external under-crofts K10/246

ISSUED FOR CONSTRUCTION

For continuation, refer to dwg: 222586-AW-114

Rev	Date	By	Chk	Comment
B	11.10.10	RKC	CJ	Apollo Issue - Final Coordination by Apollo
A	17.08.10	RKC	CJ	Gen update

FRANKHAM

Frankham Consultancy Group Limited
21 Perrymount Road
Haywards Heath RH16 3TP
t 01444 444900 f 01444 455642
enquire@frankham.com
www.frankham.com

Client	
Project Title	Woodside Inclusive Learning Campus
Drawing Title	Reflected Ceiling Plan First Floor Block W

Drawn by:	RKC	Scale:	1:50@A1	Date:	03.06.10
Designed by:	FCG	Checked by:	CJ	Approved by:	AC

File Ref.:	0208030706-40026218-DWG-WOODSIDE-INC-LRN-PLAN-AND-GA-222586-AW-113-REV-B-14.03.14.18.23
Drawing No.	222586-AW-113
Rev.	B