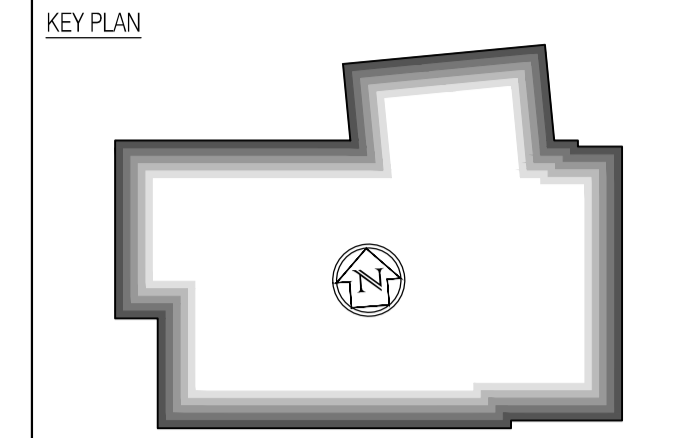




NOTES: Do not scale this drawing. All dimensions to be checked on site prior to commencement or manufacture.



Block W Acoustic Key (*Permissible Site' figures quoted)

T1	T1	T1	T1	T1	Acoustic level (up to 40dB)
T2	T2	T2	T2	T2	Acoustic level (up to 47dB)
T3	T3	T3	T3	T3	Acoustic level (up to 52dB)
T4	T4	T4	T4	T4	Acoustic level (up to 62dB)
T5	T5	T5	T5	T5	Acoustic level (up to 70dB)
T6	T6	T6	T6	T6	Acoustic Door (up to 35dB)

Refer also to Partition Strategy drawings AW-130 & 131 & NBS

ISSUED FOR CONSTRUCTION

Rev	Date	By	Clk	Comment
C	11.10.10	RKC	CJ	Apollo Issue - Final Coordination by Apollo
B	13.09.10	RKC	CJ	Issued for Building Regulation Approval
B	17.08.10	RKC	CJ	General revisions
A	02.08.10	RKC	CJ	Issued for Building Regulation Approval

BRINGING IDEAS TO LIFE

FRANKHAM

Frankham Consultancy Group Limited
 21 Parnmount Road
 Heywards Heath, RH11 6 3TP
 t 01444 444900 f 01444 455642
 enquiry@frankham.com
 www.frankham.com

Client

Project Title

Woodside
 Inclusive Learning Campus

Drawing Title

Acoustic Strategy Plan
 Ground Floor Plan
 Block W

Drawn by: RKC	Scale: N. T. S. @ A1	Date: 06.07.10
Designed by: FCG	Checked by: CJ	Approved by: AC

File Ref.: 0200020206-40020206-BLOCK W-AC-REL-LOC-PLAN-AND-GA-2209-48-10-2010 - REV-C-14021112 14/04/23 14:17:03

Drawing No. 222586-AW-130	Rev. C
------------------------------	-----------