

Louved plant room enclosure in accordance with Manufacturer's design and instructions in accordance with M&E Engineer's design and specification

Allfabs Architectural Aluminium Coping in accordance with Manufacturer's design and instructions

Facing brickwork

Allfabs Architectural Aluminium Coping in accordance with Manufacturer's design and instructions

Vertical timber slats 200mm x 44mm @ 244mm c/c fixed in accordance with Structural Engineer's design and specification

Galvanised steel handrail 900mm above pitch line and 1100mm above landings, extending min 300mm past top and bottom step.

22mm ballusters to have separation of no greater than 100mm clear

Galvanised mild steel prefabricated fire escape stairs from ground to first and forming roof access in accordance with Manufacturer's design and instructions. Goings to be 300mm min and risers to be 150mm max

Structural steel frame to support metal stairs in accordance with Structural Engineer's design and specification

Galvanised steel handrail 900mm above pitch line and 1100mm above landings, extending min 300mm past top and bottom step.

22mm ballusters to have separation of no greater than 100mm clear

Galvanised mild steel prefabricated fire escape stairs from ground to first and forming roof access in accordance with Manufacturer's design and instructions. Goings to be 300mm min and risers to be 150mm max

Concrete plant room slab raised to accommodate differing ground level in accordance with Structural Engineer's design and specification

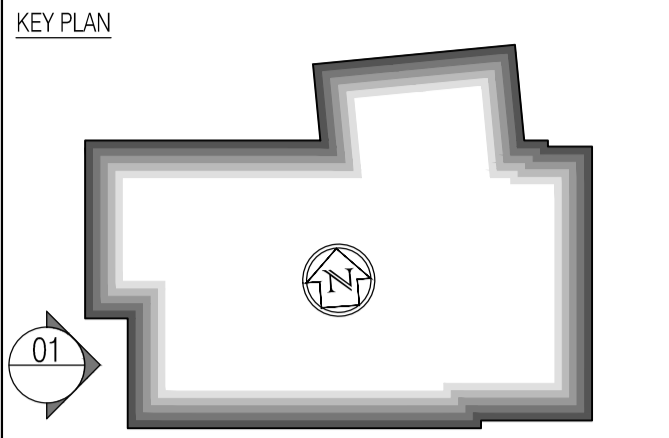
Facing brickwork wall to base of stairs to form solid barrier to prevent access through slats to activate bar latch externally

Solid metal gate with push bar activation in case of fire. Design to ensure prevention of bar latch activation externally

Strip foundations (shown for clarity) in accordance with Structural Engineer's design and specification

02 Main Stair Section
Scale: 1:20

NOTES: Do not scale this drawing. All dimensions to be checked on site prior to commencement or manufacture.



Rev	Date	By	Ck	Comment
C	11.10.10	RKC	CJ	Apollo Issue - Final Coordination by Apollo
B	06.09.10	RKC	CJ	General revisions
A	17.08.10	RKC	CJ	General revisions

BRINGING IDEAS TO LIFE

Frankham Consultancy Group Limited
21 Perryman Road
Haywards Heath RH16 3TP
t 01444 444900 f 01444 455642
enquire@frankham.com
www.frankham.com

Client

Project Title
Woodside
Inclusive Learning Campus

Drawing Title
Detailed Elevation
Escape Stair
Block W

Drawn by: RKC
Scale: 1:20@A1
Date: 07.07.10

Designed by: FCG
Checked by: CJ
Approved by: AC

File Ref.: 0222586-AW-414-DWG - REV-C 14/04/23 14:23:53

Drawing No. 222586-AW-414 Rev. C