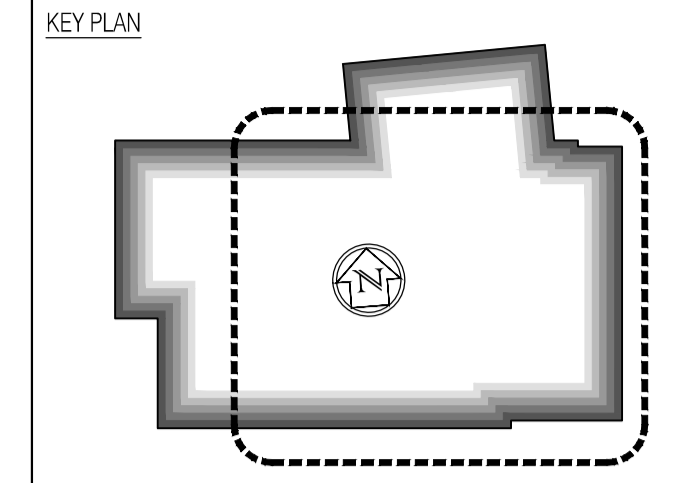


NOTES: Do not scale this drawing. All dimensions to be checked on site prior to commencement or manufacture.



- General Notes**
- All secondary steel to be in accordance with Manufacturer's design, details and specification.
 - All concrete / steelwork shown indicative sizes / locations only.
 - All concrete / steelwork to be confirmed by Structural Engineer.
 - All structural information generally to be in accordance with Structural Engineer's design, details and specification.
 - All mechanical, electrical, plumbing and ventilation information to be in accordance with Mechanical and Electrical Engineer's design, details and specification.
 - Some insulation omitted for clarity. Refer to partition detail drawings for details.
 - Roof Mansafe System is required and shall be the responsibility of the Roofing Contractor. System to be installed in accordance with Manufacturer's design and specifications.

Opening Reference Legend

Denotes floor level: Denotes room n°:


Denotes block:

Denotes opening type: Denotes opening n°:

ISSUED FOR CONSTRUCTION


Rev	Date	By	Clk	Comment
E	11.10.10	RKC	CJ	Apollo Issue - Final Coordination by Apollo
D	06.09.10	RKC	CJ	General revisions
C	17.08.10	RKC	CJ	General revisions
B	02.08.10	RKC	CJ	Issued for Building Regulation Approval
A	22.07.10	RKC	CJ	Gen update

BRINGING IDEAS TO LIFE



FRANKHAM

Frankham Consultancy Group Limited
 21 Perrymount Road
 Haywards Heath RH16 3TP
 t 01444 444900 f 01444 455642
 enquiry@frankham.com
 www.frankham.com

Client: 

Project Title: Woodside Inclusive Learning Campus

Drawing Title: General Arrangement Plan
 First Floor
 Block W

Drawn by: RKC	Scale: 1:50@A1	Date: 03.06.10
Designed by: FCG	Checked by: CJ	Approved by: AC

File Ref.: ©2010 FRANKHAM CONSULTANCY GROUP LIMITED. ALL RIGHTS RESERVED. REVISED 14/04/23 14:15:03

Drawing No. 222586-AW-104 Rev. E

For continuation, refer to dwg: 222586-AW-103

Precast concrete stair in accordance with Manufacturer's design and instructions

First floor projection supported on concrete columns below in accordance with Structural Engineer's design and specification