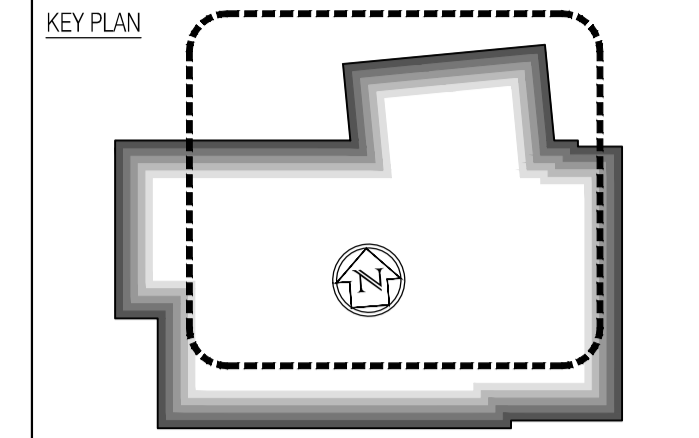
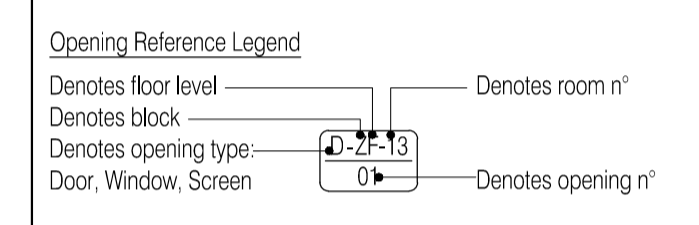


NOTES: Do not scale this drawing. All dimensions to be checked on site prior to commencement or manufacture.



- General Notes**
- All secondary steel to be in accordance with Manufacturer's design, details and specification.
 - All concrete / steelwork shown indicative sizes / locations only.
 - All concrete / steelwork to be confirmed by Structural Engineer.
 - All structural information generally to be in accordance with Structural Engineer's design, details and specification.
 - All mechanical, electrical, plumbing and ventilation information to be in accordance with Mechanical and Electrical Engineer's design, details and specification.
 - Some insulation omitted for clarity. Refer to partition detail drawings for details.
 - Roof Mansafe System is required and shall be the responsibility of the Roofing Contractor. System to be installed in accordance with Manufacturer's design and specifications.



ISSUED FOR CONSTRUCTION

Rev	Date	By	Clk	Comment
E	11.10.10	RKC	CJ	Apollo Issue - Final Coordination by Apollo
D	06.09.10	RKC	CJ	General revisions
C	17.08.10	RKC	CJ	General revisions
B	02.08.10	RKC	CJ	Issued for Building Regulation Approval
A	22.07.10	RKC	CJ	Gen update

BRINGING IDEAS TO LIFE

FRANKHAM

Frankham Consultancy Group Limited
 21 Parnmount Road
 Haywards Heath RH16 3TP
 t 01444 444900 f 01444 455642
 enquiry@frankham.com
 www.frankham.com

Client		
Project Title	Woodside Inclusive Learning Campus	
Drawing Title	General Arrangement Plan Roof Plan Block W	
Drawn by:	Scale:	Date:
RKC	1:50@A1	03.06.10
Designed by:	Checked by:	Approved by:
FCG	CJ	AC
File Ref.:	0:\000\222586-AW\0002\BLOCK W\ROOF PLAN AND GA 222586-AW-107.dwg - REV 6-14-02-10-10 14/04/23 14:15:50	
Drawing No.	Rev.	
222586-AW-108	E	

For continuation, refer to dwg: 222586-AW-107