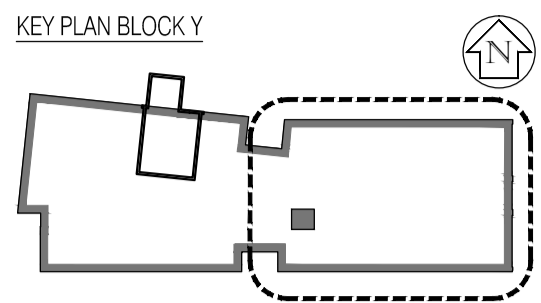


NOTES: Do not scale this drawing. All dimensions to be checked on site prior to commencement or manufacture.



- General Notes
- For location and setting out dimensions of plinths, refer to M&E drawing Y-B500 Rev C3.
  - Refer to M&E Builderswork drawings for holes/penetrations locations and sizes.
  - GF over shown dashed.

**ISSUED FOR CONSTRUCTION**

Rev	Date	By	Chk	Comment
B	10.12.09	RKC	CJ	Gen rev's
A	21.09.09	AL	-	Issued for Construction

**BRINGING IDEAS TO LIFE**

**FRANKHAM**

Frankham Consultancy Group Limited  
 21 Parnmount Road  
 Haywards Heath RH16 3TP  
 t 01444 444900 f 01444 455642  
 enquiry@frankham.com  
 www.frankham.com

Client

**APOLLO EDUCATION**

Project Title

Woodside  
 Inclusive Learning Campus

Drawing Title

Proposed Basement Plan  
 Block Y  
 Sheet 2 of 2

Drawn by: RKC	Scale: 1:50@A1	Date: Jul 09
Designed by: FCG	Checked by: CJ	Approved by: AC

File Ref.: 01222586-AY-110-2

Drawing No. <b>222586-AY-110-2</b>	Rev. <b>B</b>
---------------------------------------	------------------

