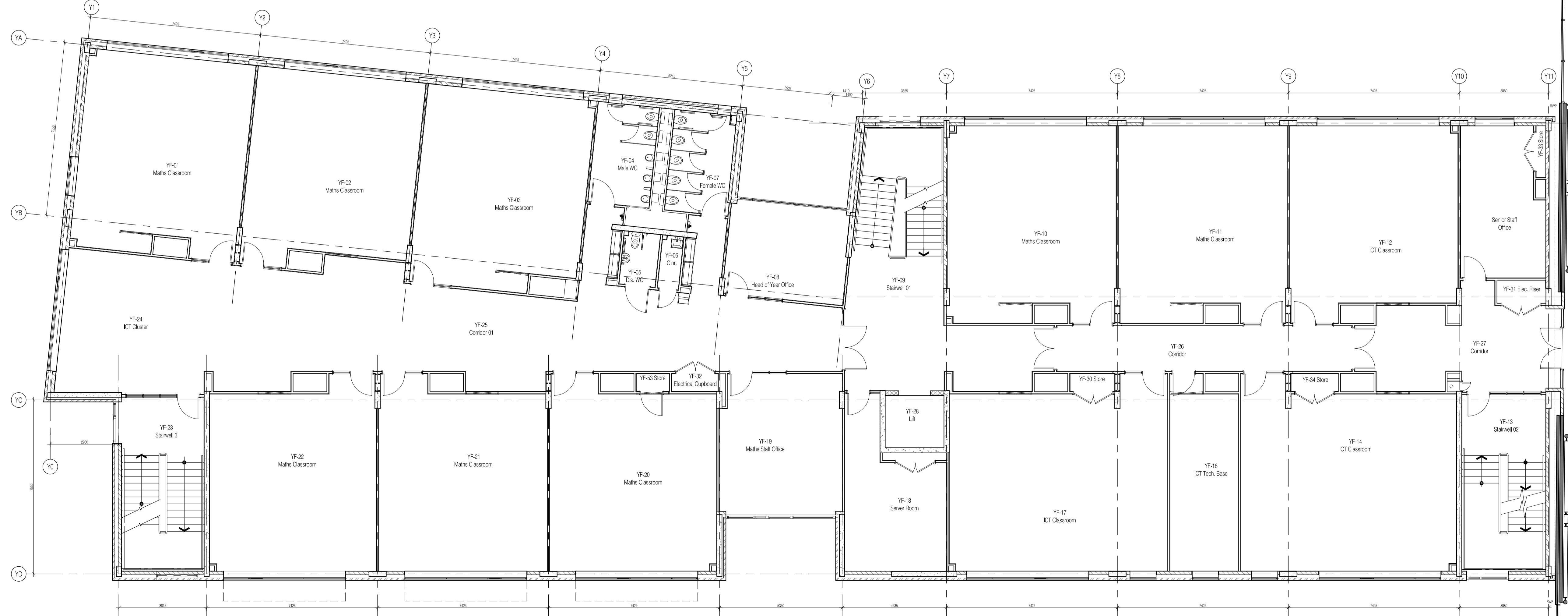


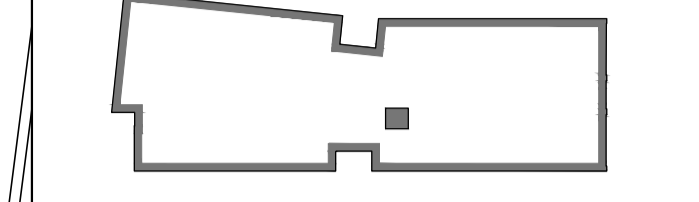
01 Ground Floor Scale: 1:100



02 First Floor Scale: 1:100

NOTES: Do not scale this drawing. All dimensions to be checked on site prior to commencement or manufacture.

KEY PLAN BLOCK Y



Fixed Furniture and Equipment Legend. All furniture & equipment shown as indicative layouts for information. Proposed FF&E layouts to be supplied by Jot Design

- S1 1000 x 500 x 2m high lockable Tambour Storage
- S2 1000 x 500 x 4 high lockable Tambour Storage
- S3 Teachers mobile storage unit
- S4 Laptop storage cabinet
- S5 1000 x 350 Open Storage
- S6 Desk high pedestal
- T1 1200 X 600 Stackable Classroom Table
- T2 1200 X 600 Height Adjustable Classroom Table
- T3 1400 X 800 Teachers Desk
- T4 700 X 700 ICT Desk
- B1 Bin
- C1 Students Classroom chair
- C2 Standard locker
- C3 Teachers Classroom chair
- C4 Students ICT chair
- C5 Visitors / Meeting chair
- C6 Office chair
- 1000 x 360 Rolling Storage
- 1200 Standard whiteboard
- W2 2000mm pin board
- A2 Interactive whiteboard
- W1 Coat hooks
- A1

ISSUED FOR CONSTRUCTION

REVISION ISSUE DATE REQUIRED
 N
 REVISED BUT NOT FOR CONSTRUCTION

BRINGING IDEAS TO LIFE

FRANKHAM

Frankham Consultancy Group Limited
 21 Plympton Road
 Hayward Heath RH16 3TP
 t 01444 444900 f 01444 455642
 enquiry@frankham.com
 www.frankham.com

Client		
Project Title	Woodside Inclusive Learning Campus	
Drawing Title	Ground and First Floor Fixed Furniture and Equipment Arrangement Block Y	
Drawn by:	RJC	Scale: 1:100@A1
Designed by:	PCG	Date: Oct 09
Checked by:	PCG	Approved by:
File Ref.:	222586-AY-131	Rev. B

This drawing to be read in conjunction with accompanying letter ref: 222586-2009-09-21-Construction-Issue