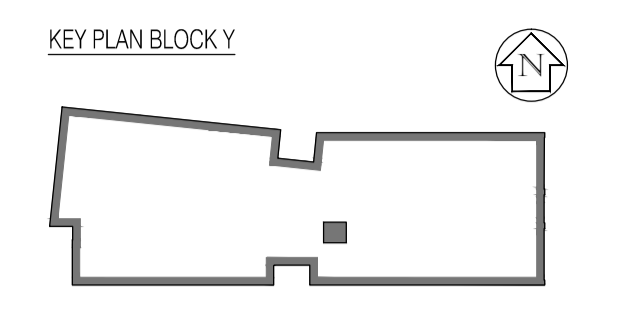


01 Second Floor
Scale: 1:100

NOTES: Do not scale this drawing. All dimensions to be checked on site prior to commencement or manufacture.



Fixed Furniture and Equipment Legend.
Fixed Furniture and Equipment Legend. All furniture & equipment shown as indicative layouts for information. Proposed FF&E layouts to be supplied by Jot Design

- S1 1000 x 500 x 2m high lockable Tambour Storage
- S2 1000 x 500 x 4 draw side opening filling cabinet
- S3 Teachers mobile storage unit
- S4 Laptop storage cabinet
- S5 1000 x 350 Open Storage
- S6 Desk high pedestal
- T1 1200 X 600 Stackable Classroom Table
- T2 1200 X 600 Height Adjustable Classroom Table
- T3 1400 X 800 Teachers Desk
- T4 700 X 700 ICT Desk
- B1 Bin
- B2 Students Classroom chair
- C7 Standard locker
- C3 Teachers Classroom chair
- C2 Students ICT chair
- C5 Visitors / Meeting chair
- C6 Office chair
- 1000 x 360 Rolling Storage
- W2 1200 Standard whiteboard
- A2 2000mm pin board
- Interactive whiteboard
- Coat hooks

ISSUED FOR CONSTRUCTION

REVISION ISSUE DATE REQUIRED
REVISED BUT NOT ISSUED

Rev	Date	By	Clk	Comment
1	09/10/09	AKC	CJ	Issued for Construction

BRINGING IDEAS TO LIFE

FRANKHAM

Frankham Consultancy Group Limited
21 Pennymount Road
Haywards Heath RH16 3TP
t 01444 444900 f 01444 455642
enquiries@frankham.com
www.frankham.com

Client:

Project Title: Woodside Inclusive Learning Campus

Drawing Title: Proposed Second Floor Fixed Furniture and Equipment Plan Block Y

Drawn by: RMC	Scale: 1:50 @ A1	Date: Oct 09
Designed by: PEG	Checked by: CJ	Approved by: AC

File Ref.: 222586-AY-132	14/04/09 14:53:02
Drawing No. 222586-AY-132	Rev. B

This drawing to be read in conjunction with accompanying letter ref: 222586-2009-09-21-Construction-Issue