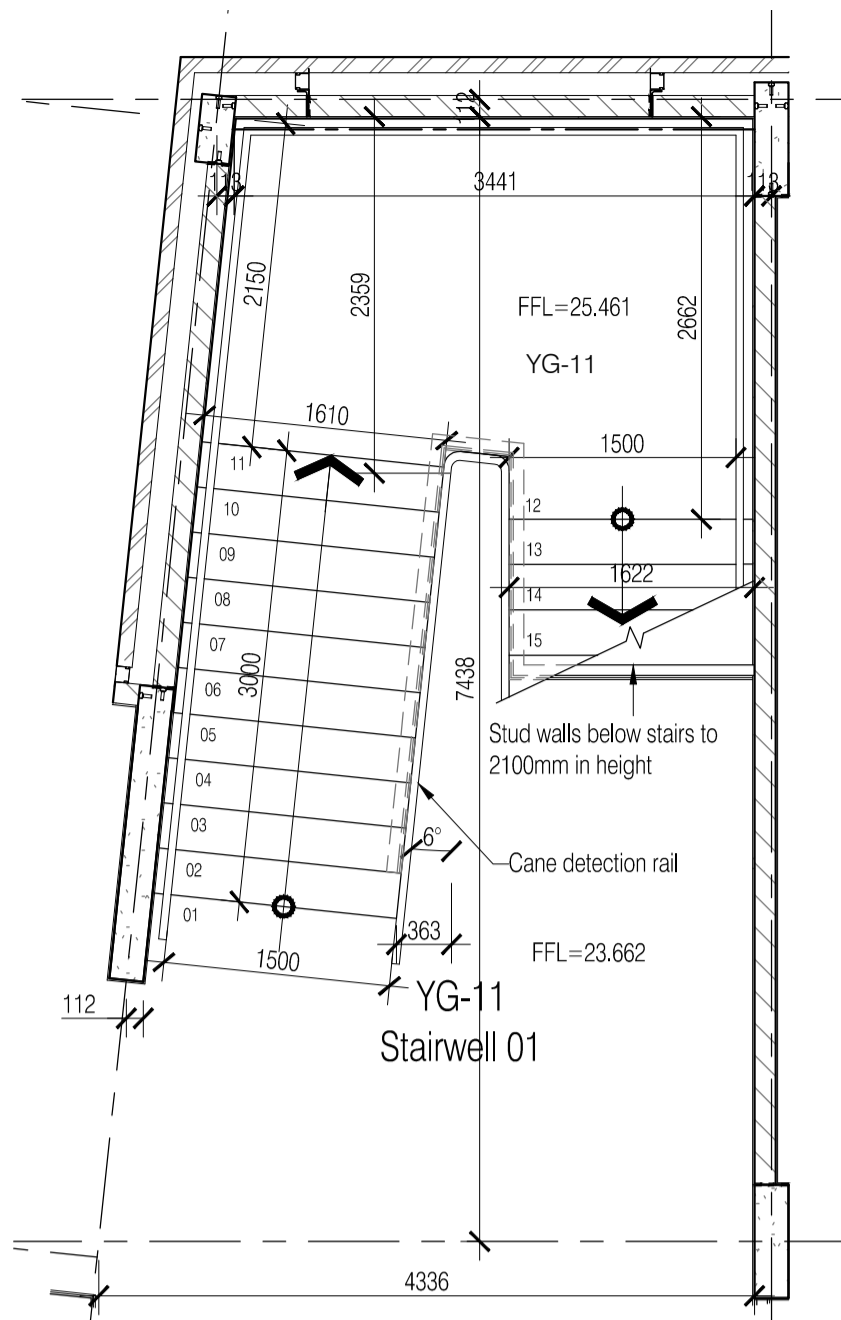
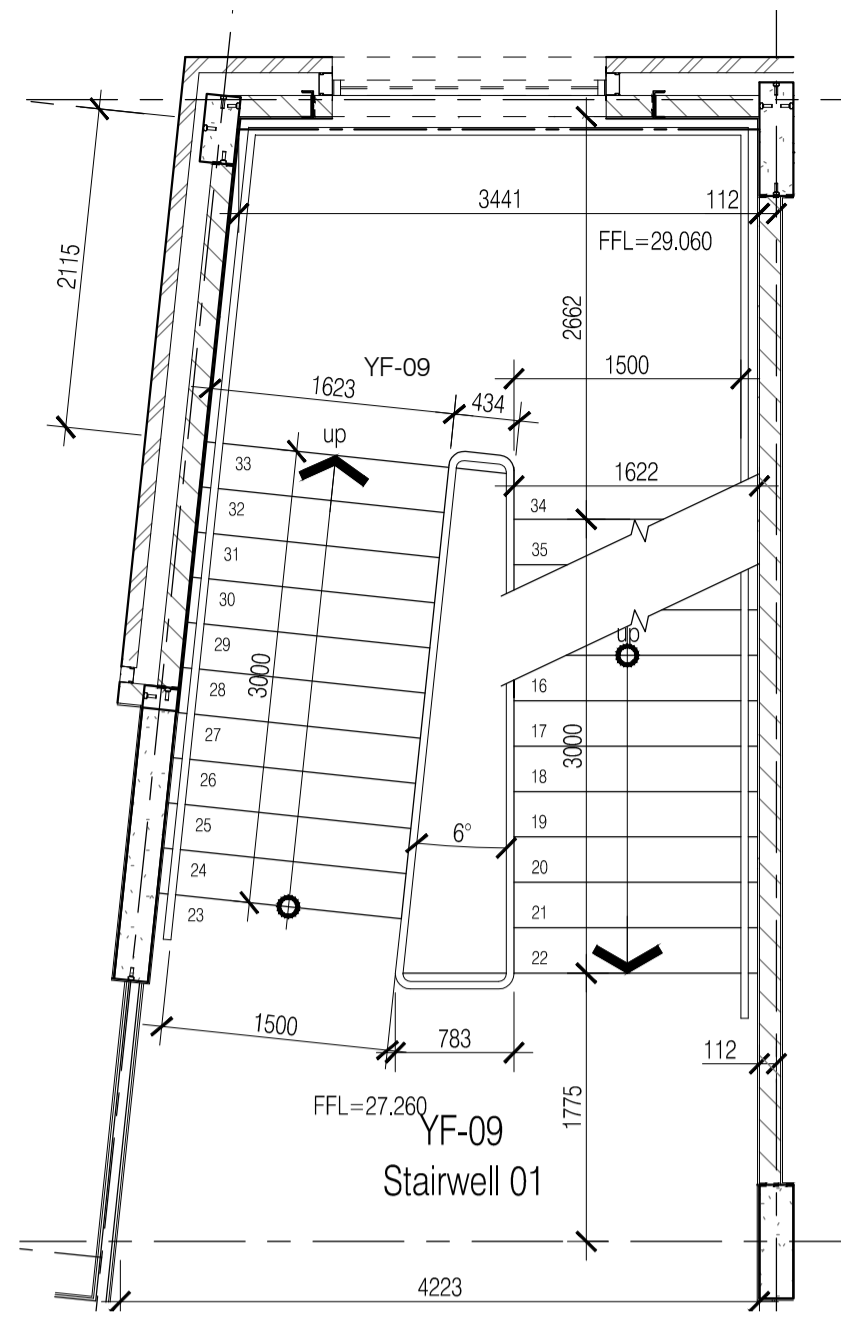


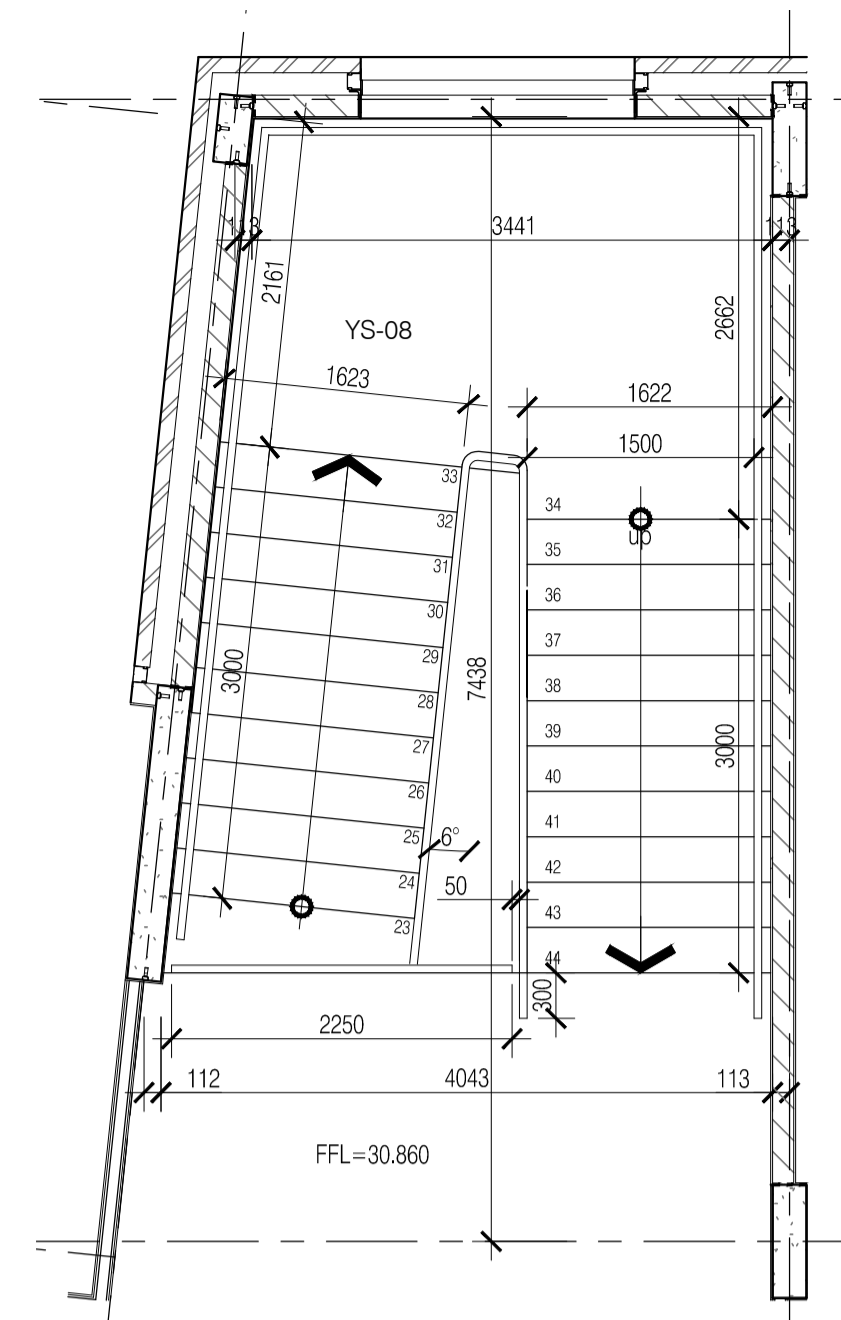
STAIRWELL 01
GROUND
FLOOR



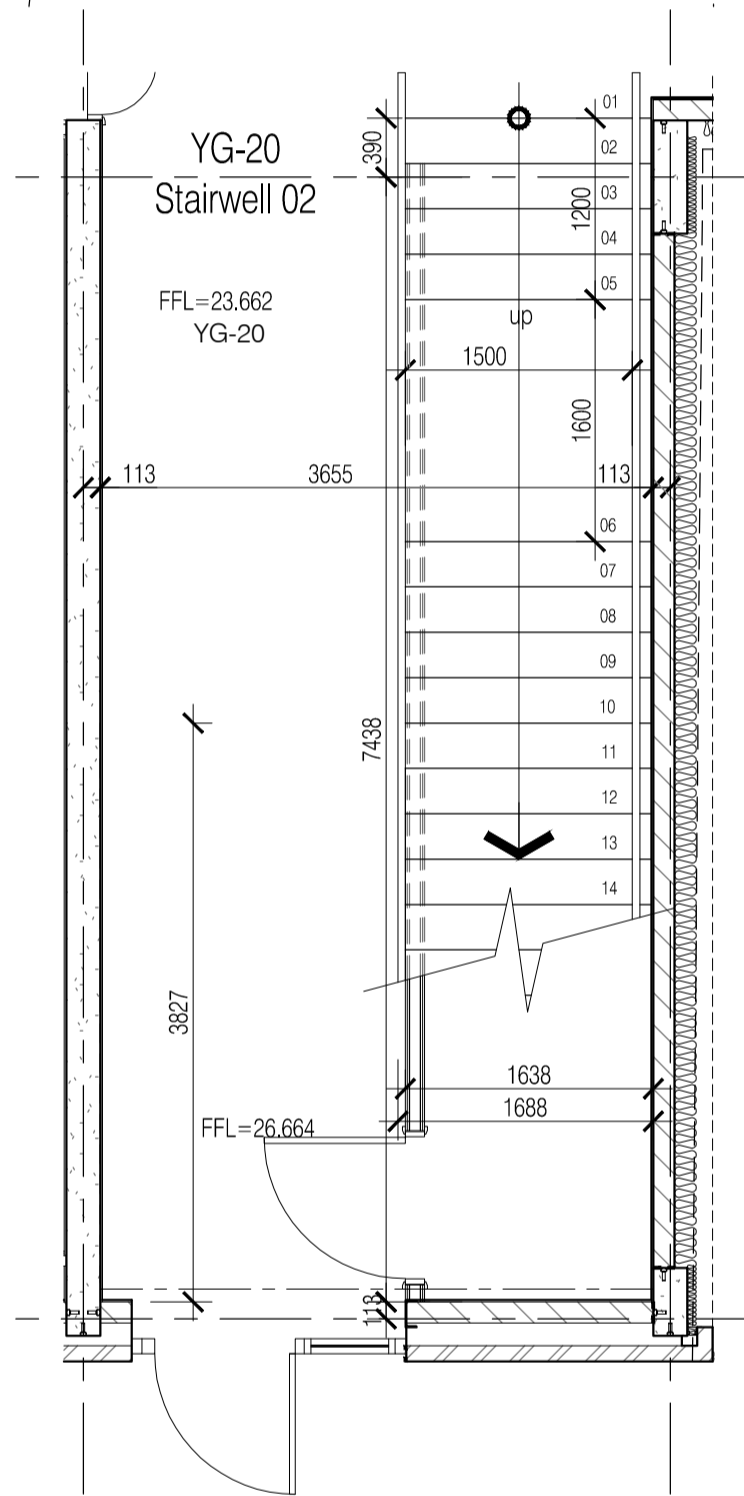
STAIRWELL 01
FIRST FLOOR



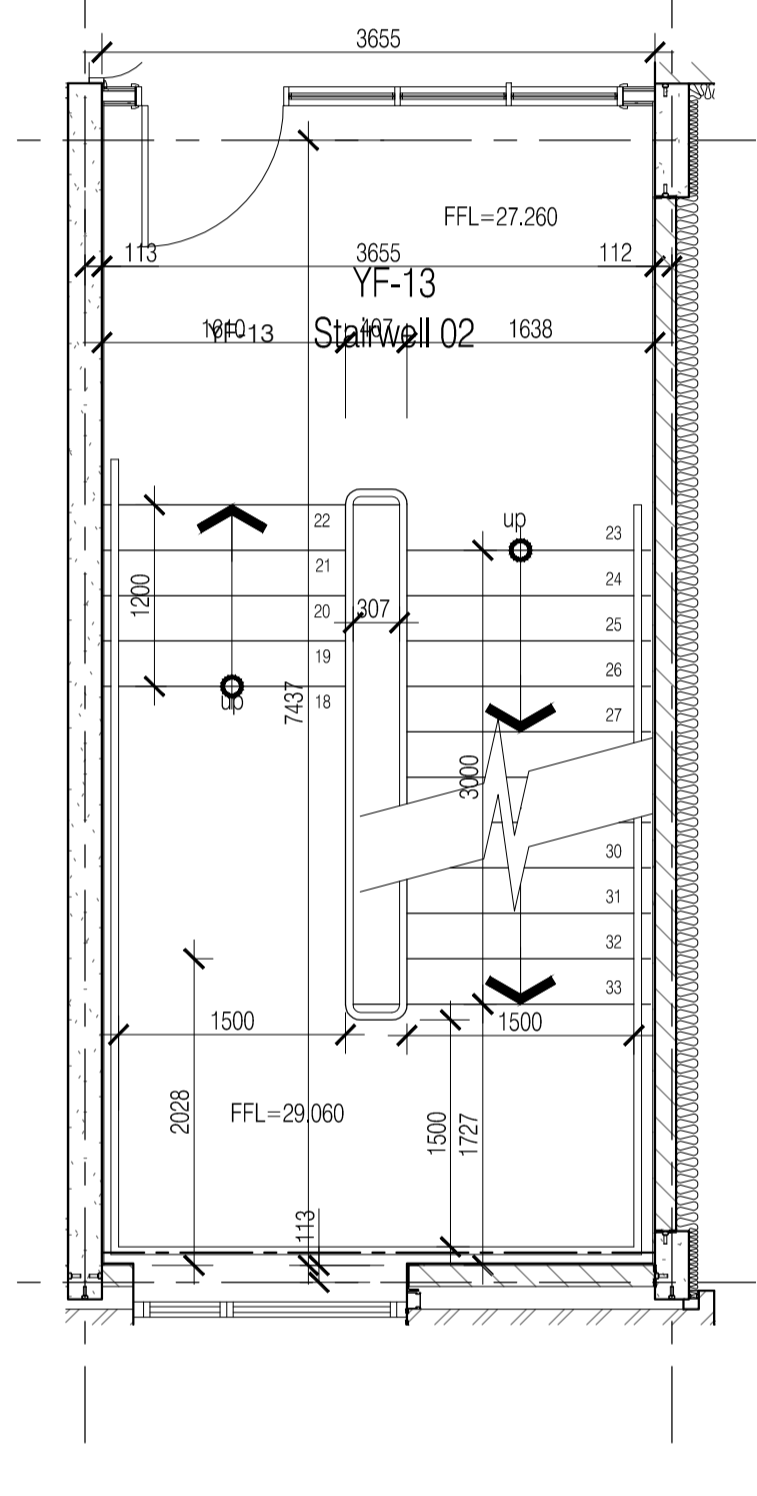
STAIRWELL 01
SECOND
FLOOR



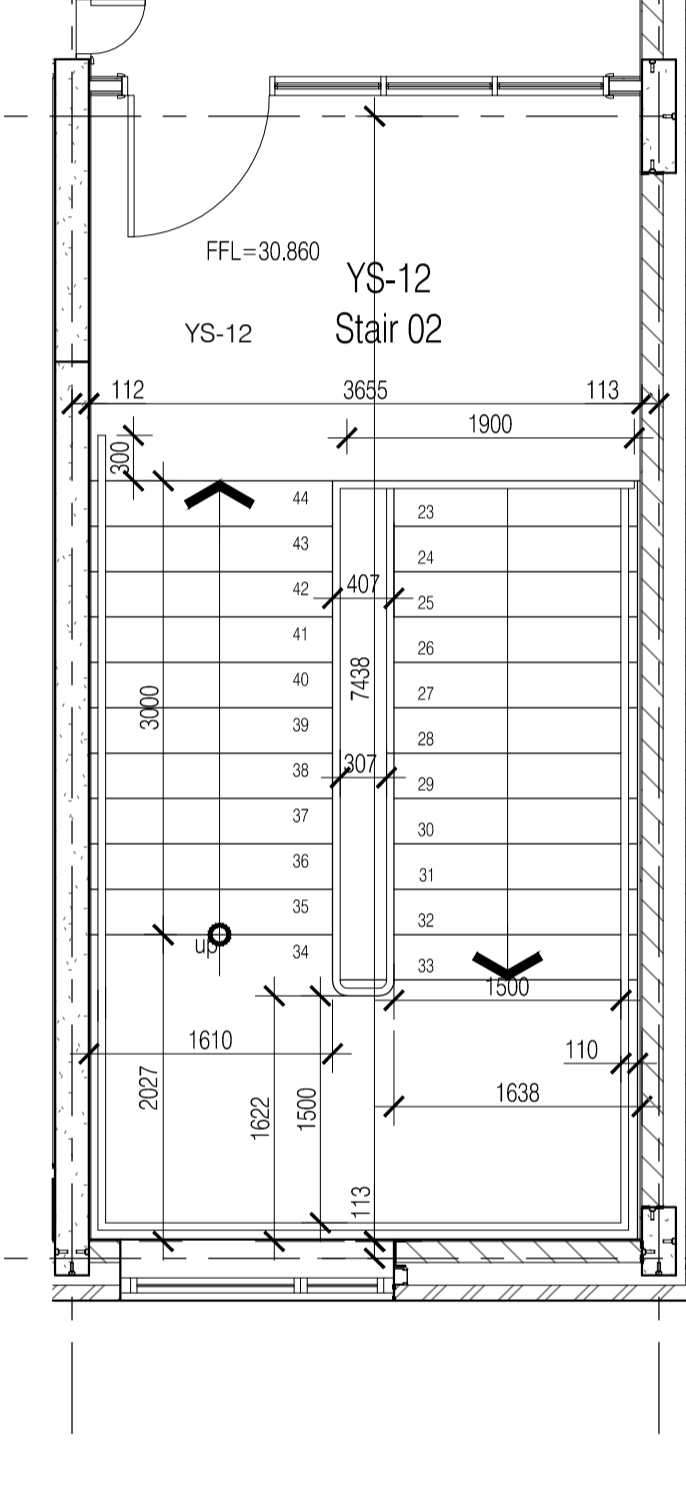
STAIRWELL 02
GROUND
FLOOR



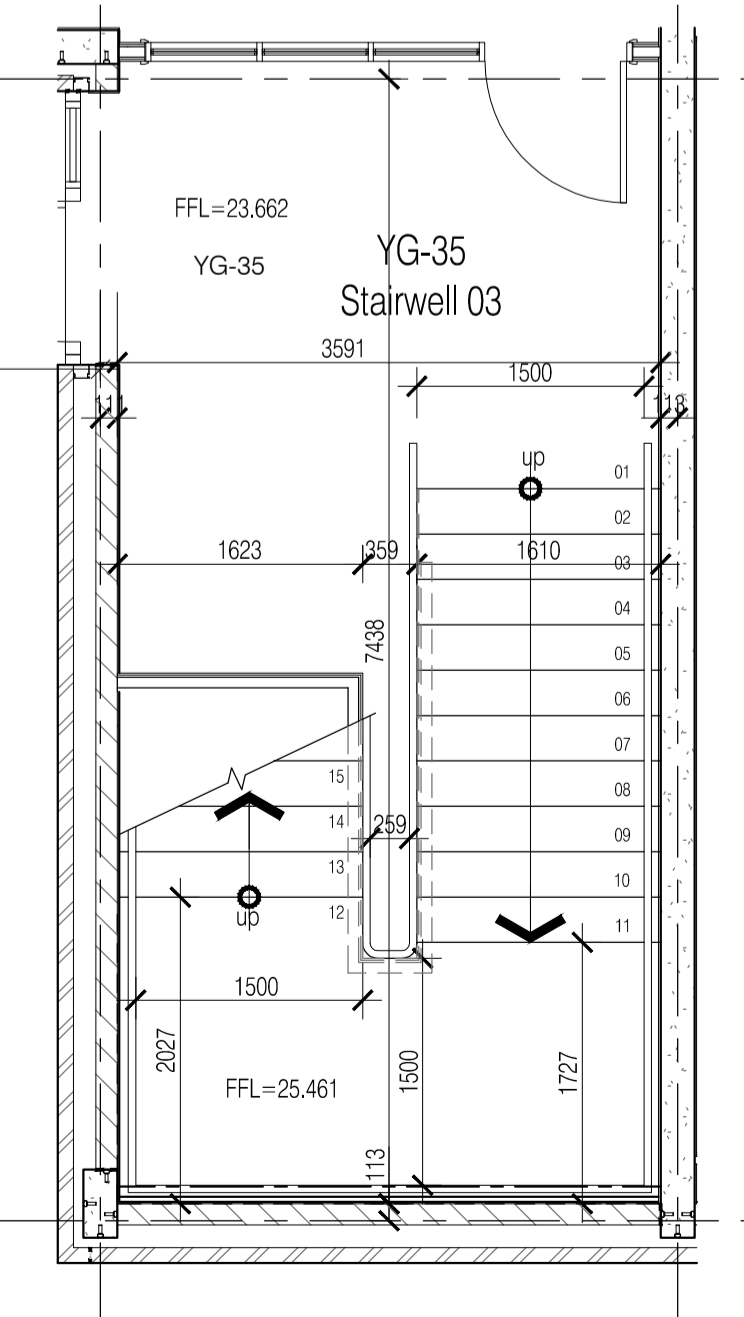
STAIRWELL 02
FIRST FLOOR



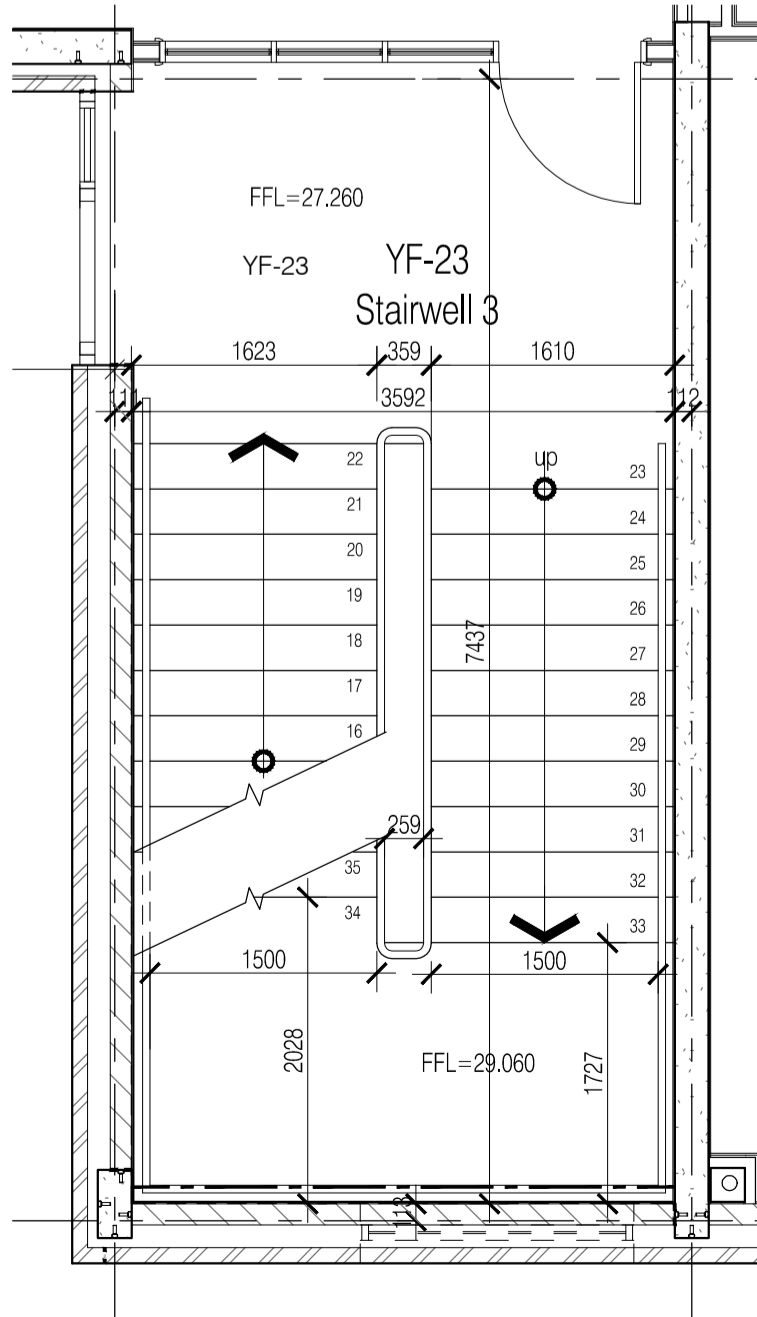
STAIRWELL 02
SECOND
FLOOR



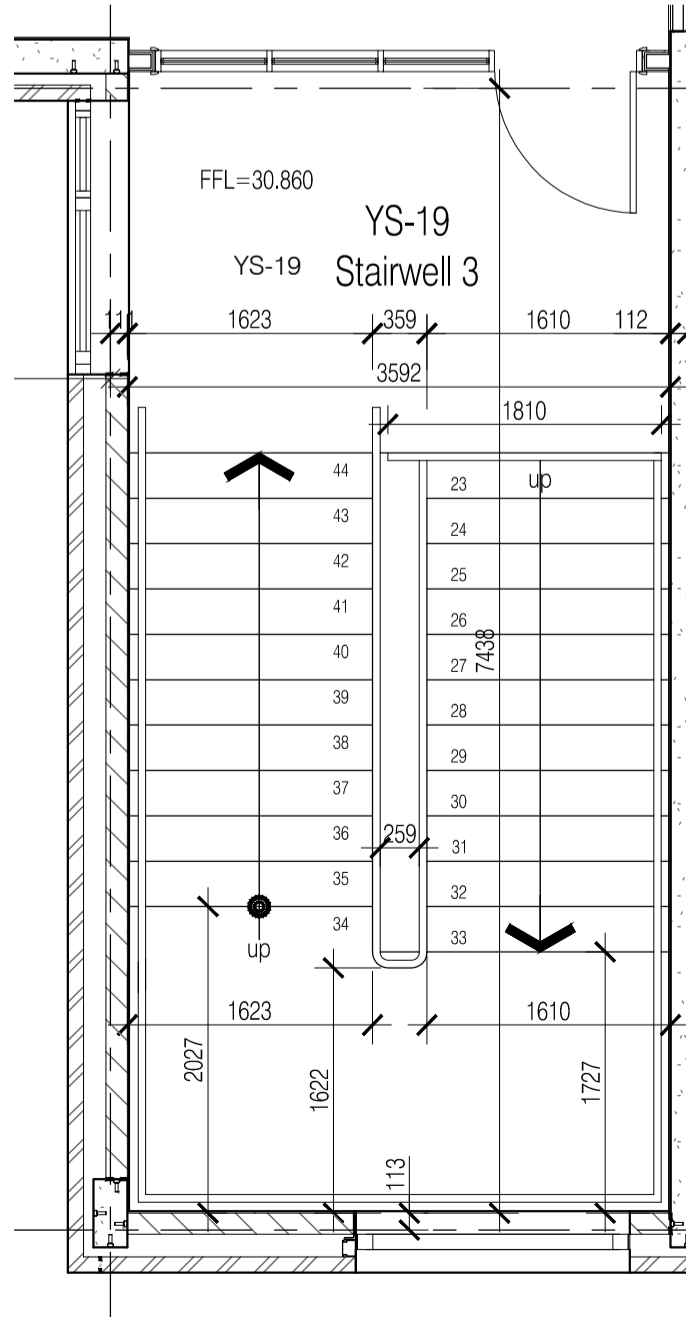
STAIRWELL 03
GROUND
FLOOR



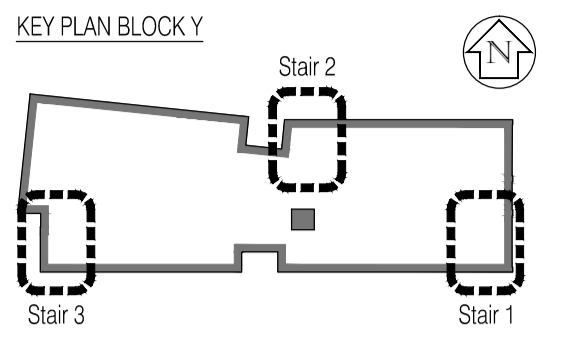
STAIRWELL 03
FIRST FLOOR



STAIRWELL 03
SECOND
FLOOR



NOTES: Do not scale this drawing. All dimensions to be checked on site prior to commencement or manufacture.



Notes:
All dimensions are to the structure.
For all staircase details, refer to FCG drawing: 222586-AY-413

ISSUED FOR CONSTRUCTION

Rev	Date	By	Clk	Comment
B	11.12.09	RKC	CJ	Gen rev's
A	21.09.09	AL		Issued for Construction



Frankham Consultancy Group Limited
21 Perrymount Road
Haywards Heath RH16 3TP
t 01444 444800 f 01444 455642
enquire@frankham.com
www.frankham.com

Client

Project Title
Woodside
Inclusive Learning Campus

Drawing Title
Stair Arrangements
Block Y

Drawn by: RKC	Scale: 1:50@A1	Date: Jul 09
Designed by: FCG	Checked by: CJ	Approved by: AC

File Ref.: 222586-AY-149
Drawing No. 222586-AY-149
Rev. B