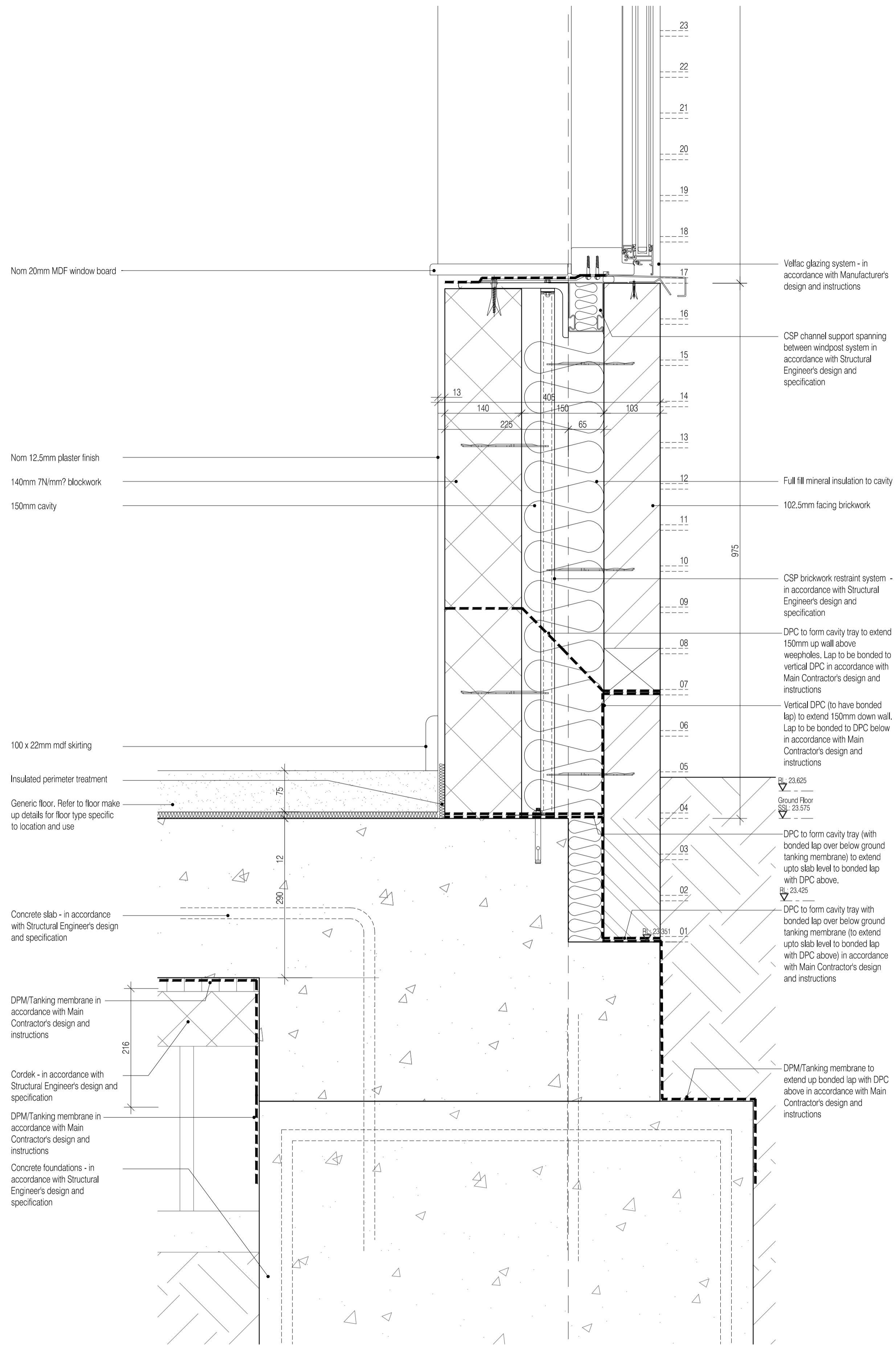
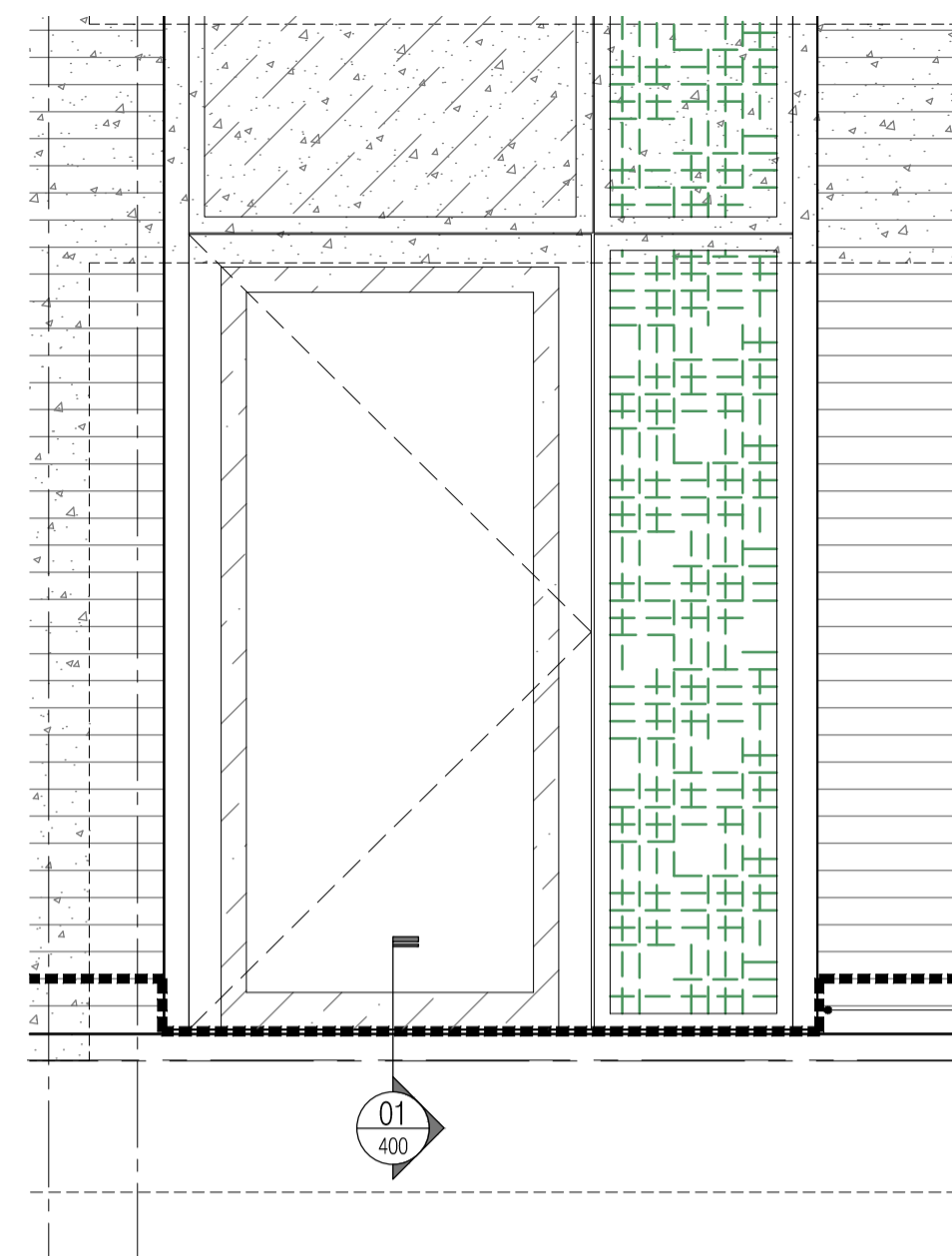


NOTES: Do not scale this drawing. All dimensions to be checked on site prior to commencement or manufacture.



01 Typical Wall Section (bottom)
Scale: 1:5



NB: This diagram is to illustrate the level change in DPC below thresholds.
DPC to lap vertical DPCs (not shown) in accordance with standard details and practices.

02 Typical Door DPC Illustration
Scale: 1:20

DPC to drop from typical level as indicated in detail 01 to below door threshold (see dwg 402). DPC to lap vertical DPCs in accordance with standard details and practices

Nom 20mm MDF window board

Nom 12.5mm plaster finish
140mm 7N/mm² blockwork
150mm cavity

100 x 22mm mdf skirting

Insulated perimeter treatment

Generic floor. Refer to floor make up details for floor type specific to location and use

Concrete slab - in accordance with Structural Engineer's design and specification

DPM/Tanking membrane in accordance with Main Contractor's design and instructions

Cordek - in accordance with Structural Engineer's design and specification

DPM/Tanking membrane in accordance with Main Contractor's design and instructions

Concrete foundations - in accordance with Structural Engineer's design and specification

Vellac glazing system - in accordance with Manufacturer's design and instructions

CSP channel support spanning between windpost system in accordance with Structural Engineer's design and specification

Full fill mineral insulation to cavity

102.5mm facing brickwork

CSP brickwork restraint system - in accordance with Structural Engineer's design and specification

DPC to form cavity tray to extend 150mm up wall above weepholes. Lap to be bonded to vertical DPC in accordance with Main Contractor's design and instructions

Vertical DPC (to have bonded lap) to extend 150mm down wall. Lap to be bonded to DPC below in accordance with Main Contractor's design and instructions

DPC to form cavity tray (with bonded lap over below ground tanking membrane) to extend up to slab level to bonded lap with DPC above.

DPC to form cavity tray with bonded lap over below ground tanking membrane (to extend up to slab level to bonded lap with DPC above) in accordance with Main Contractor's design and instructions

DPM/Tanking membrane to extend up bonded lap with DPC above in accordance with Main Contractor's design and instructions


This drawing is a representation of a Contractor Design/'As Built' Detail and does not conform to original FCG design, specification or detail. As such, FCG offers no warranty or guarantee for this detail or any resultant intersection/connection to it. FCG repudiates any and all liability in the event of failure, catastrophic or otherwise.

This drawing to be read in conjunction with accompanying letter ref: 222586-2009-09-21-Construction-Issue

ISSUED FOR CONSTRUCTION

Rev	Date	By	Chk	Comment
B	01.10.09	RKC	-	Contractor Design revs added
A	21.09.09	AL	-	Issued for Construction

BRINGING IDEAS TO LIFE



FRANKHAM

Frankham Consultancy Group Limited
21 Perrymount Road
Haywards Heath RH16 3TP
t 01444 444900 f 01444 455642
enquire@frankham.com
www.frankham.com

Client



APOLLO EDUCATION

Project Title

Woodside
Inclusive Learning Campus

Drawing Title

Proposed Wall Section
Section 1
Level Threshold Detail

Drawn by: RKC	Scale: 1:5@A1	Date: Jul 09
Designed by: FCG	Checked by: CJ	Approved by: AC

File Ref.: 022586-AY-400.DWG - 1:5@A1-09-21-14-37-47	
Drawing No. 222586-AY-400	Rev. B