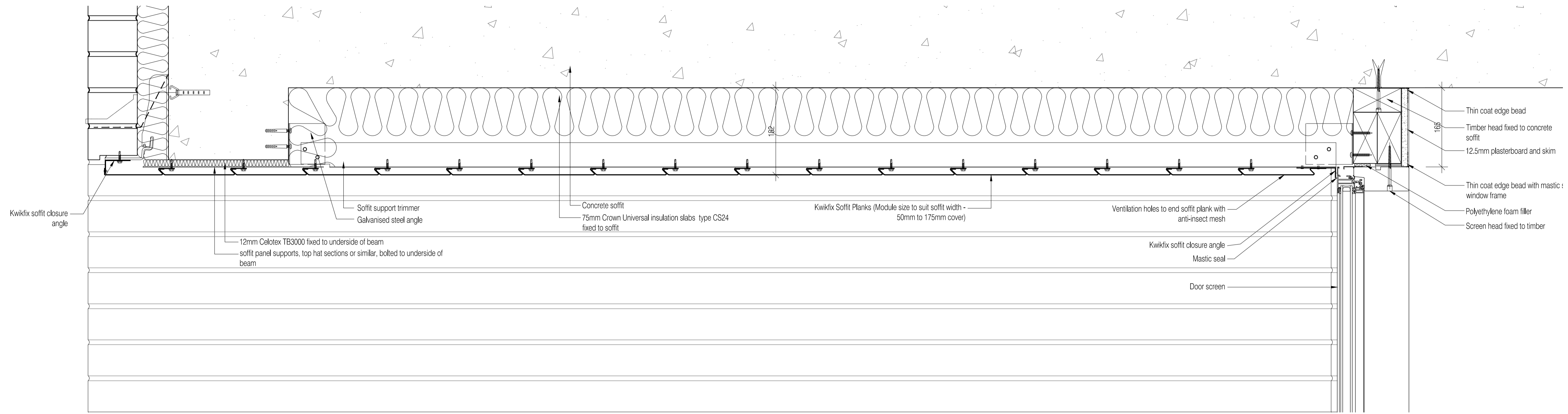
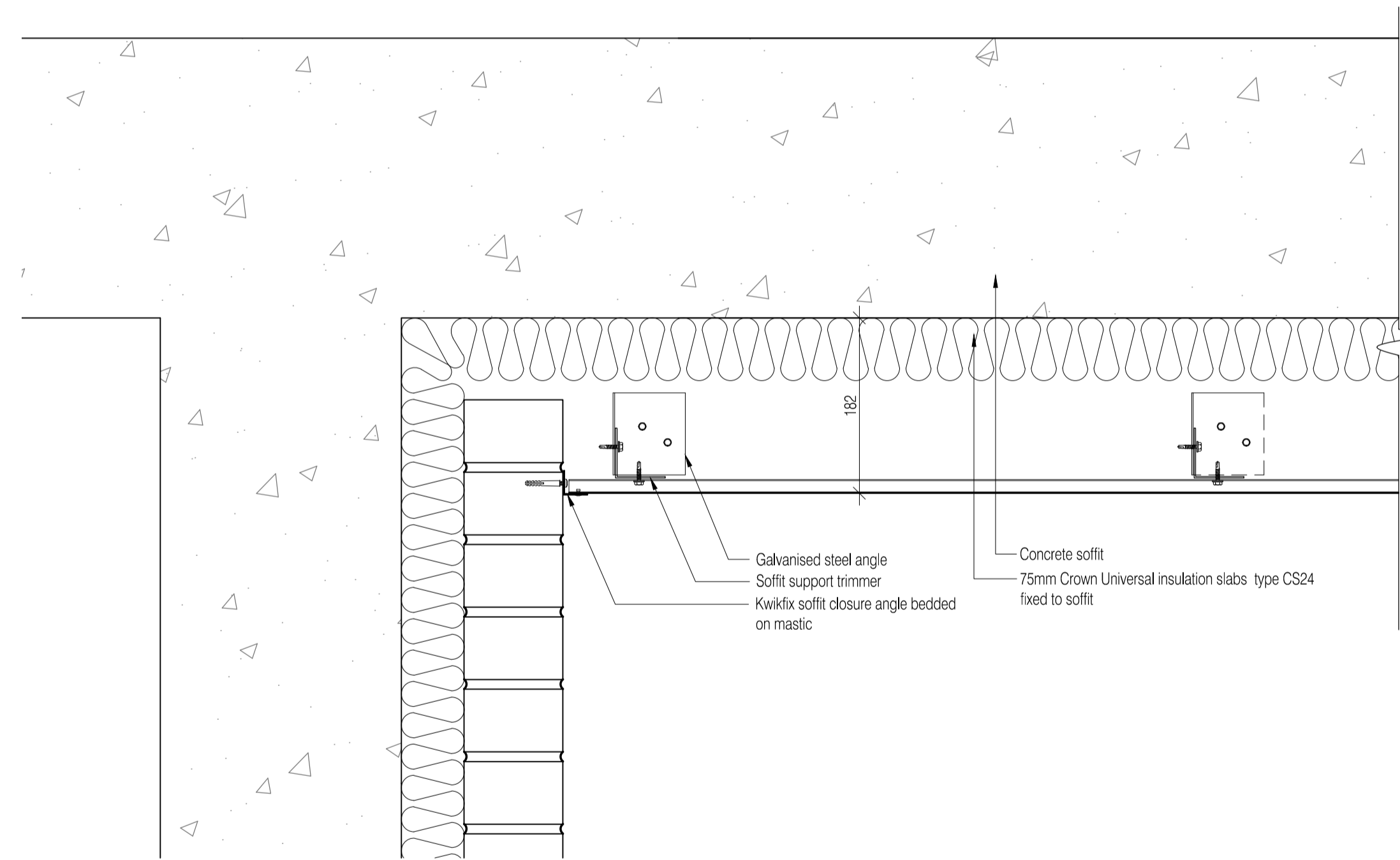


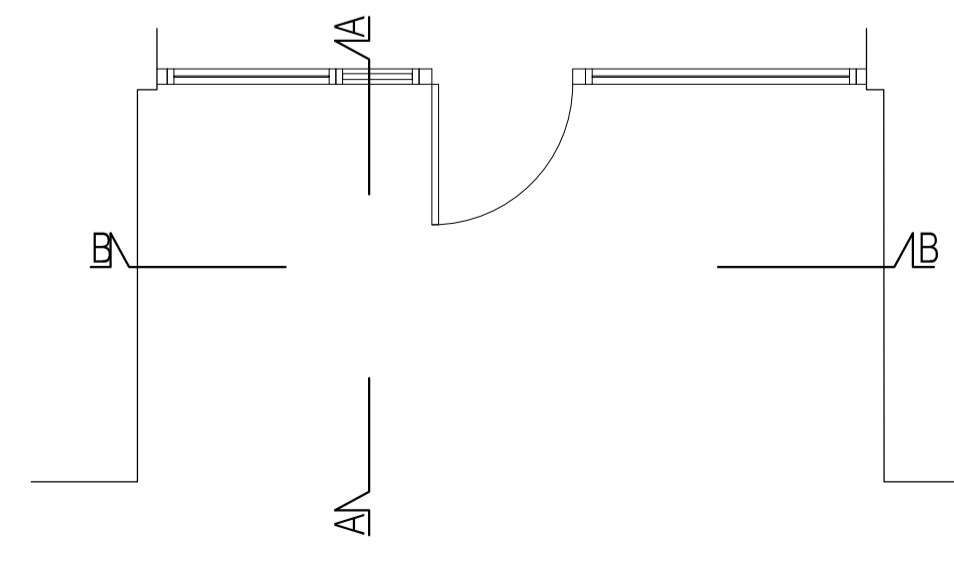
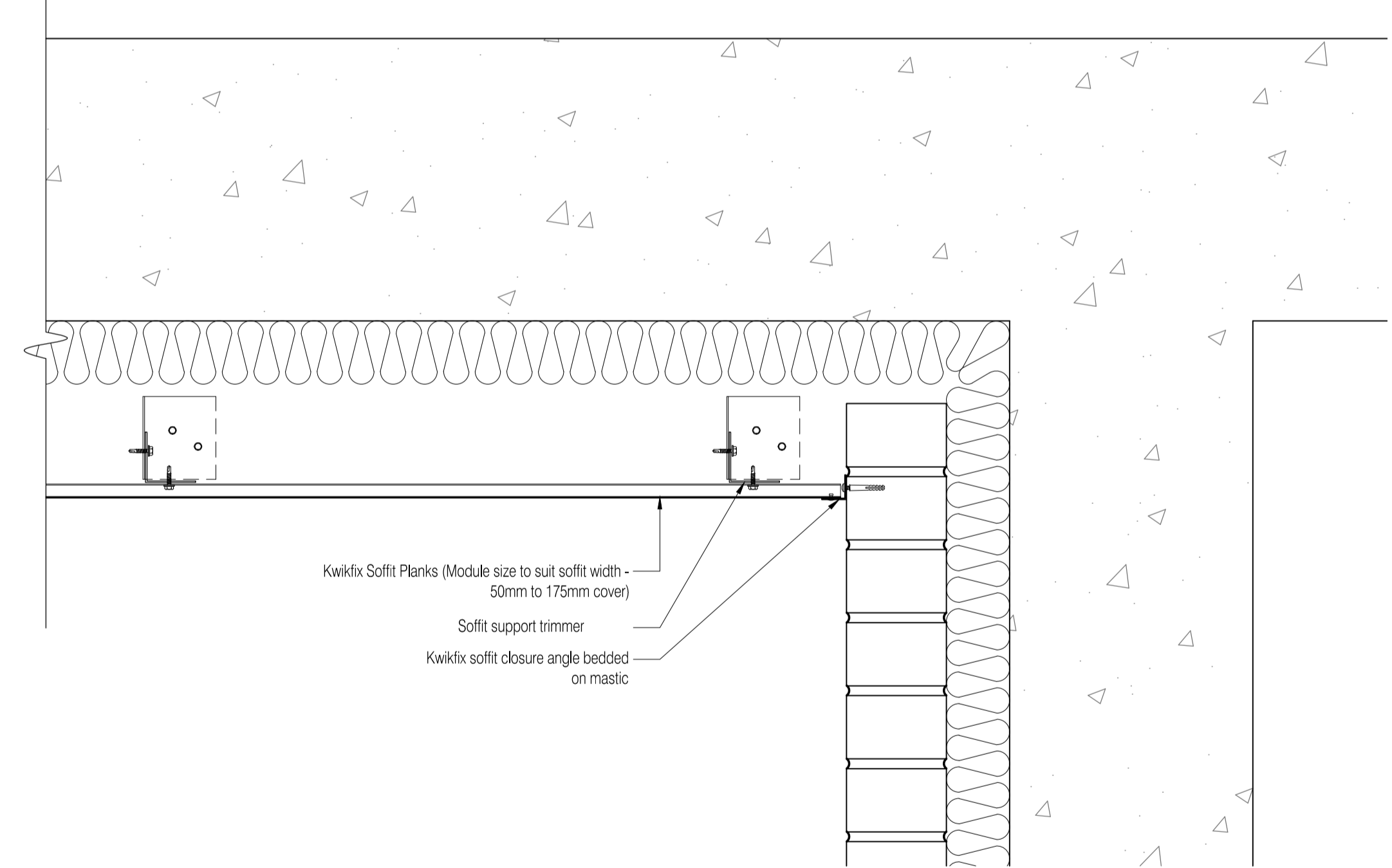
NOTES: Do not scale this drawing. All dimensions to be checked on site prior to commencement or manufacture.



**A** Soffit Section A - A  
Scale:1:5



**B** Soffit Section B - B  
Scale:1:5



SECTION DETAILS KEY PLAN

**C** Key Plan  
Scale:NTS

This drawing to be read in conjunction with accompanying letter ref. 222586-2009-09-21-Construction-Issue

**ISSUED FOR CONSTRUCTION**

Rev	Date	By	Clk	Comment
B	14.12.09	RKC	CJ	Gen revs
A	21.09.09	AL	-	Issued for Construction

**BRINGING IDEAS TO LIFE**



**FRANKHAM**

Frankham Consultancy Group Limited  
21 Perrymount Road  
Haywards Heath RH16 3TP  
t 01444 444900 f 01444 455642  
enquire@frankham.com  
www.frankham.com

Client



Project Title

Woodside  
Inclusive Learning Campus

Drawing Title

Entrance Under Croft  
Soffit Detail

Drawn by: RKC	Scale: 1:5@A1	Date: Jul 098
Designed by: FCG	Checked by: CJ	Approved by: AC

File Ref.: 222586-AY-405	Drawing No. 222586-AY-405	Rev. B
-----------------------------	------------------------------	-----------