

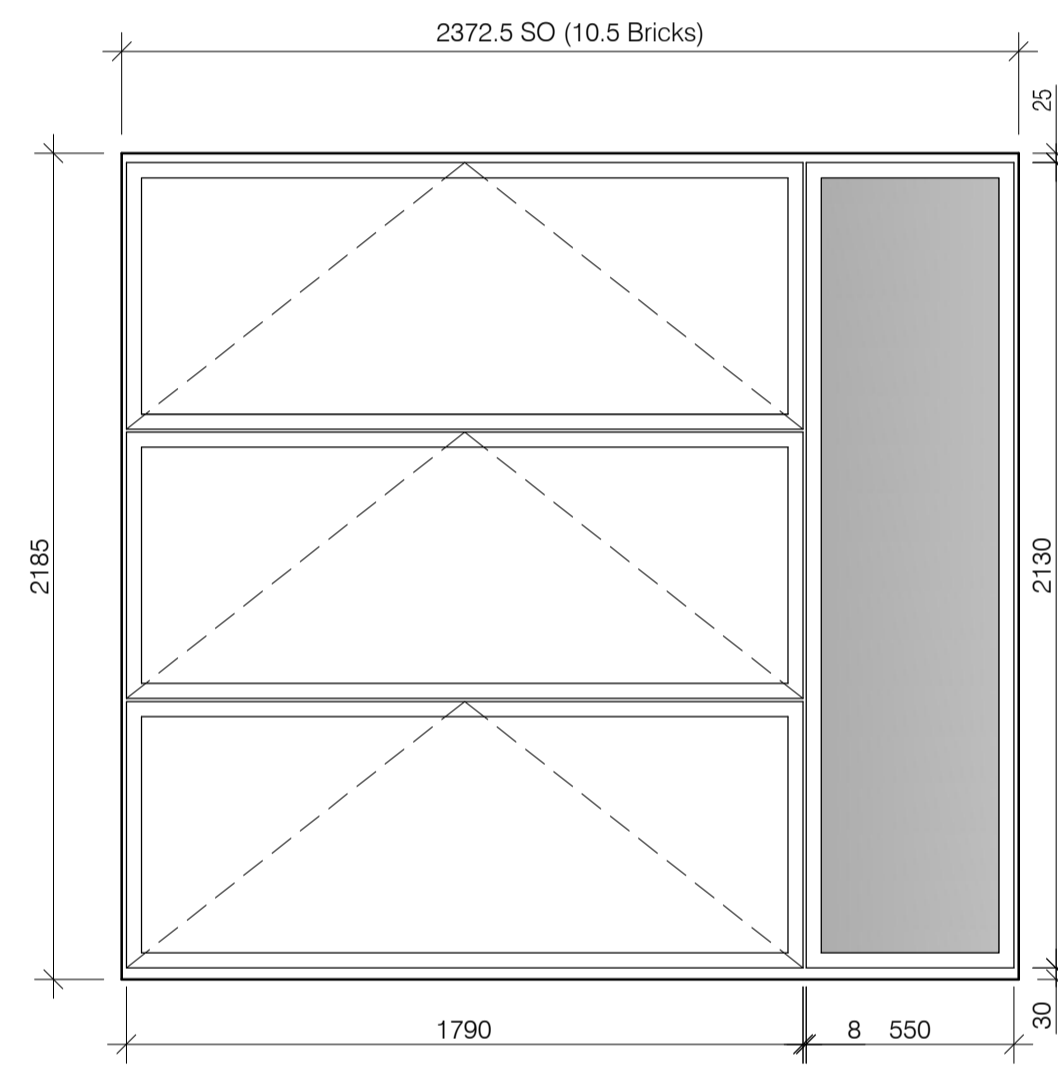
NOTES: Do not scale this drawing. All dimensions to be checked on site prior to commencement or manufacture.

Notes

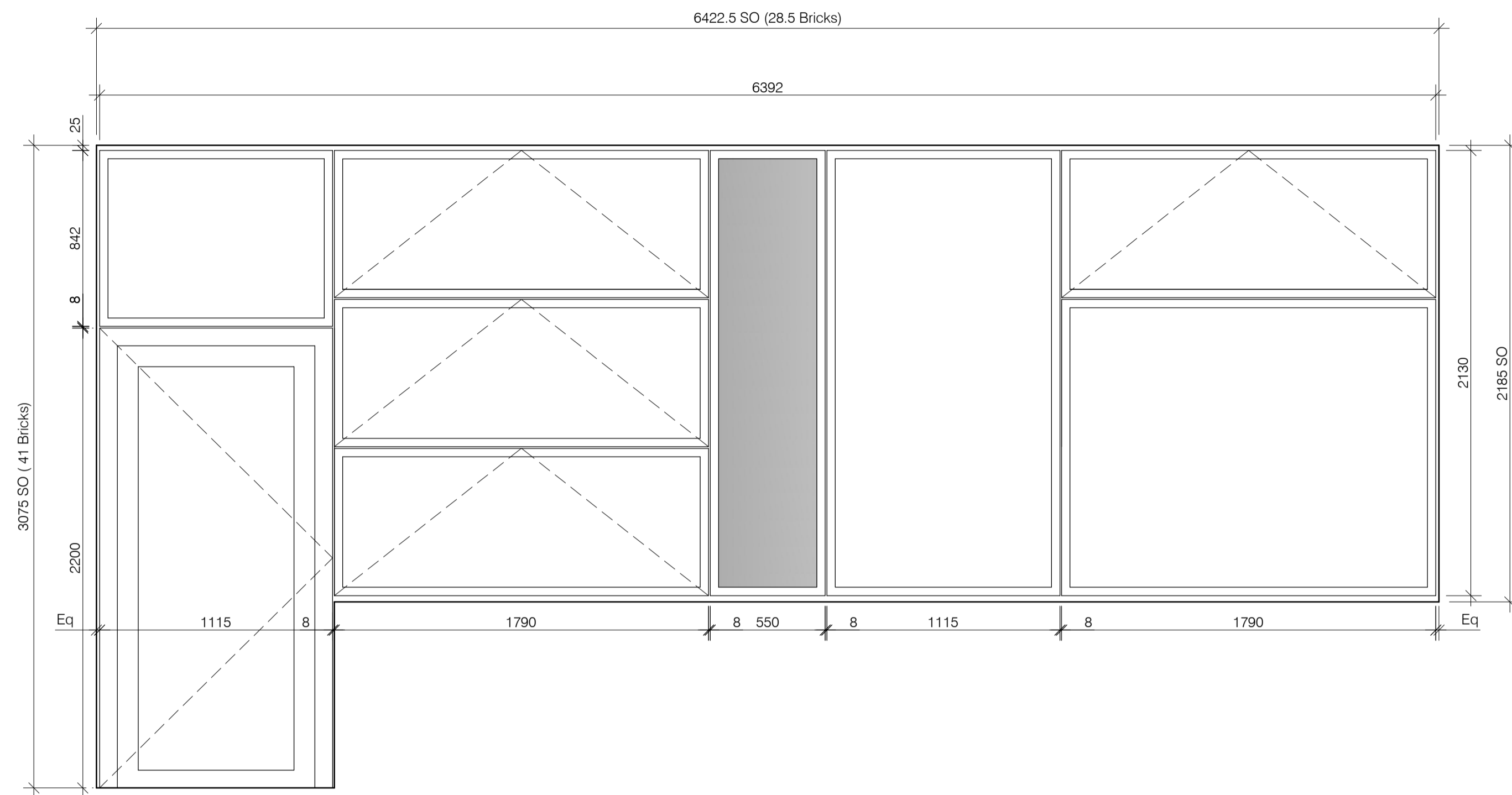
1. All window assemblies will be composite/timber window assemblies. (L10/400)
2. Composite windows aluminium clad wood by VELFAC Ltd. Exterior frames are aluminium with polyester powder coated finish. Interior frames are softwood.
3. Where required areas of glazing to be glazed with a safety glass as defined in BS6206 and in accordance with requirements N1 of the Building Regulations. All areas of glazing are to satisfy requirements N2 and N3 of the Building Regulations.

AWAITING FOR VELFAC INFORMATION WINDOW/FRAME/TOLERANCES ARE NOT FINALISED AND ARE SUBJECT TO CHANGE

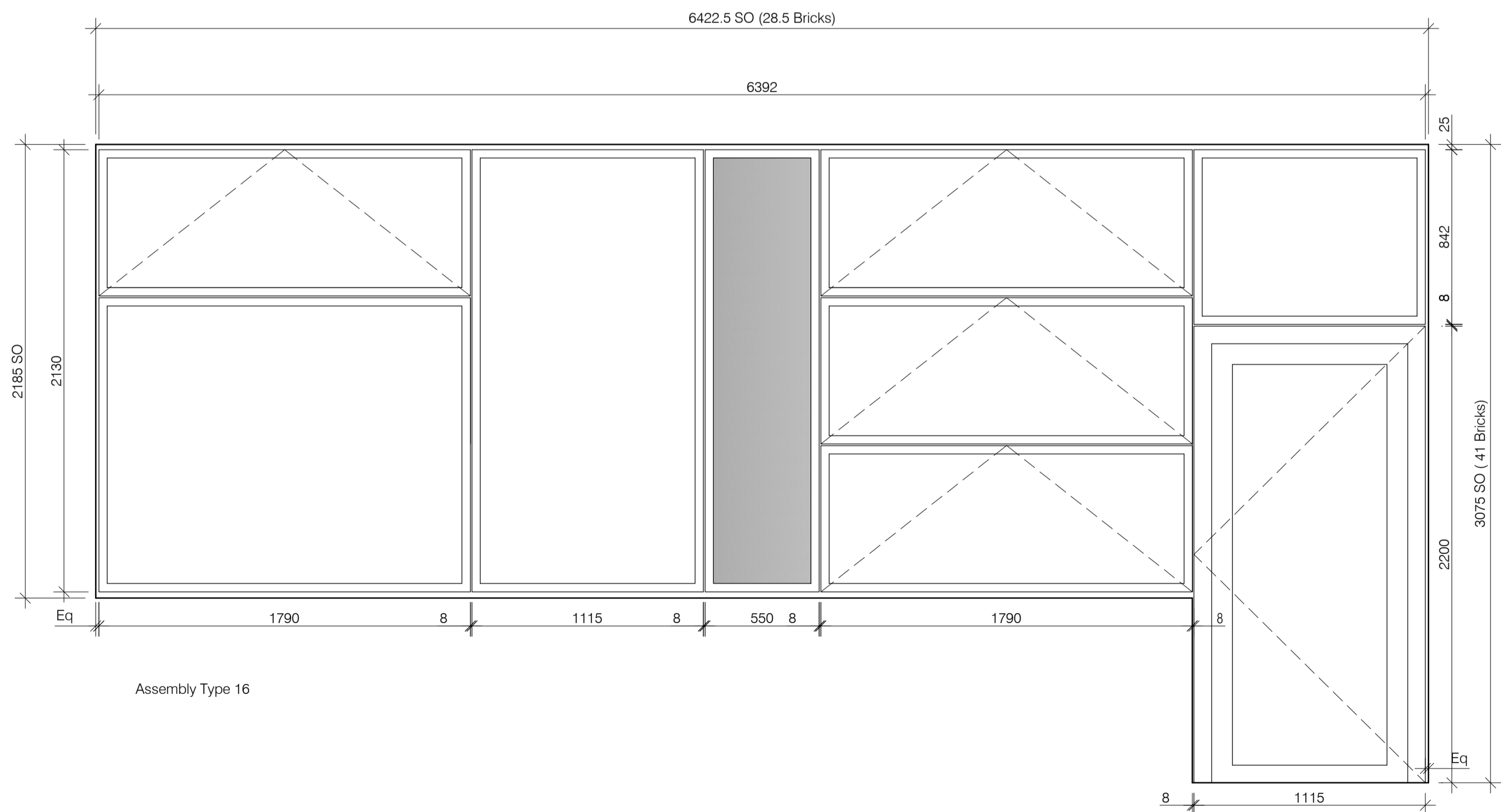
ISSUED FOR CONSTRUCTION



Assembly Type 13



Assembly Type 15



Assembly Type 16

Rev	Date	By	Chk	Comment
A	21.09.09	AL		Issued for Construction

BRINGING IDEAS TO LIFE



FRANKHAM

Frankham Consultancy Group Limited  
 21 Parnymount Road  
 Hayward Heath RH16 3TP  
 t 01444 444900 f 01444 455642  
 enquiry@frankham.com  
 www.frankham.com

Client

Project Title

Woodside  
 Inclusive Learning Campus

Drawing Title

Window Elevations  
 Block Y  
 (Sheet 3 of 4)

Drawn by: RKC	Scale: 1:20@A1	Date: Jul 09
Designed by: FCG	Checked by: CJ	Approved by: AC

File Ref.: 222586-AY-607-3 Rev: A

Drawing No. 222586-AY-607-3	Rev. A
--------------------------------	-----------