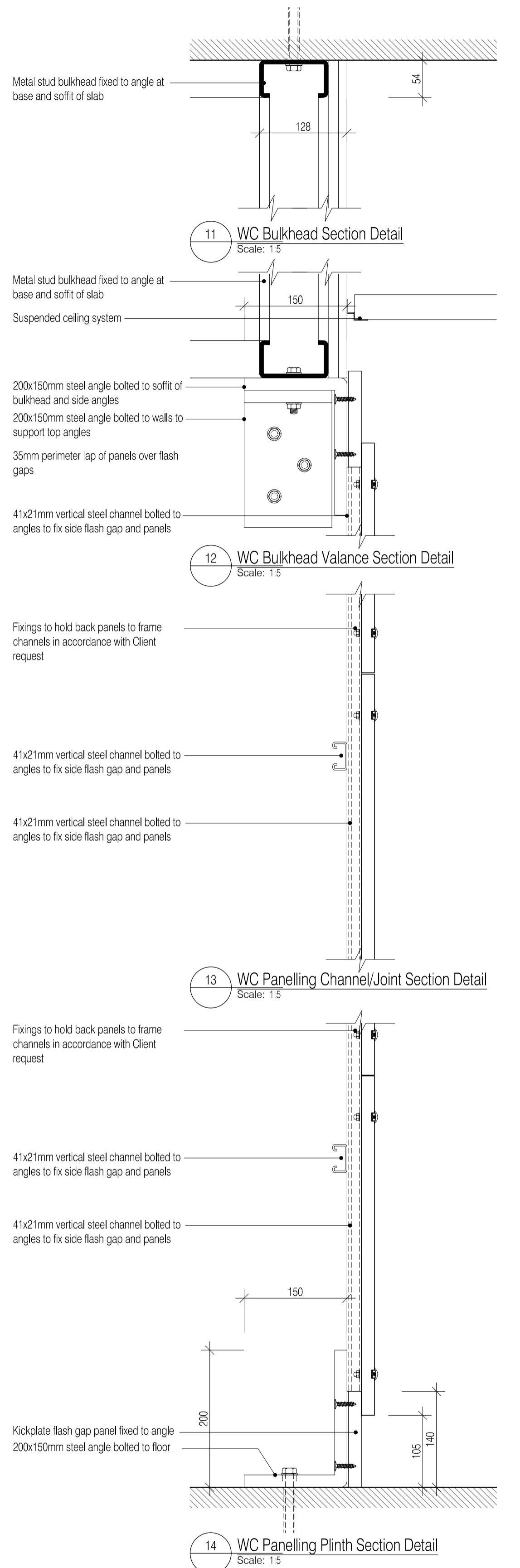
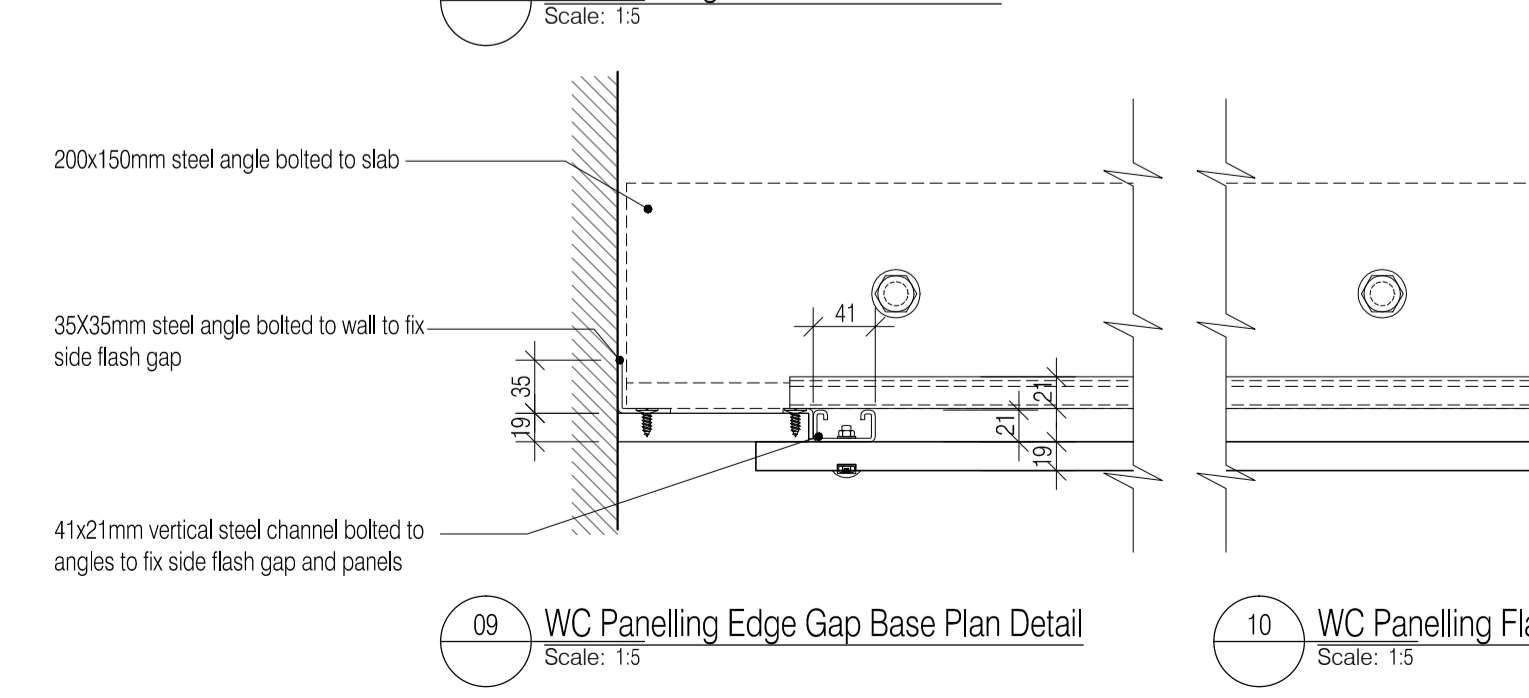
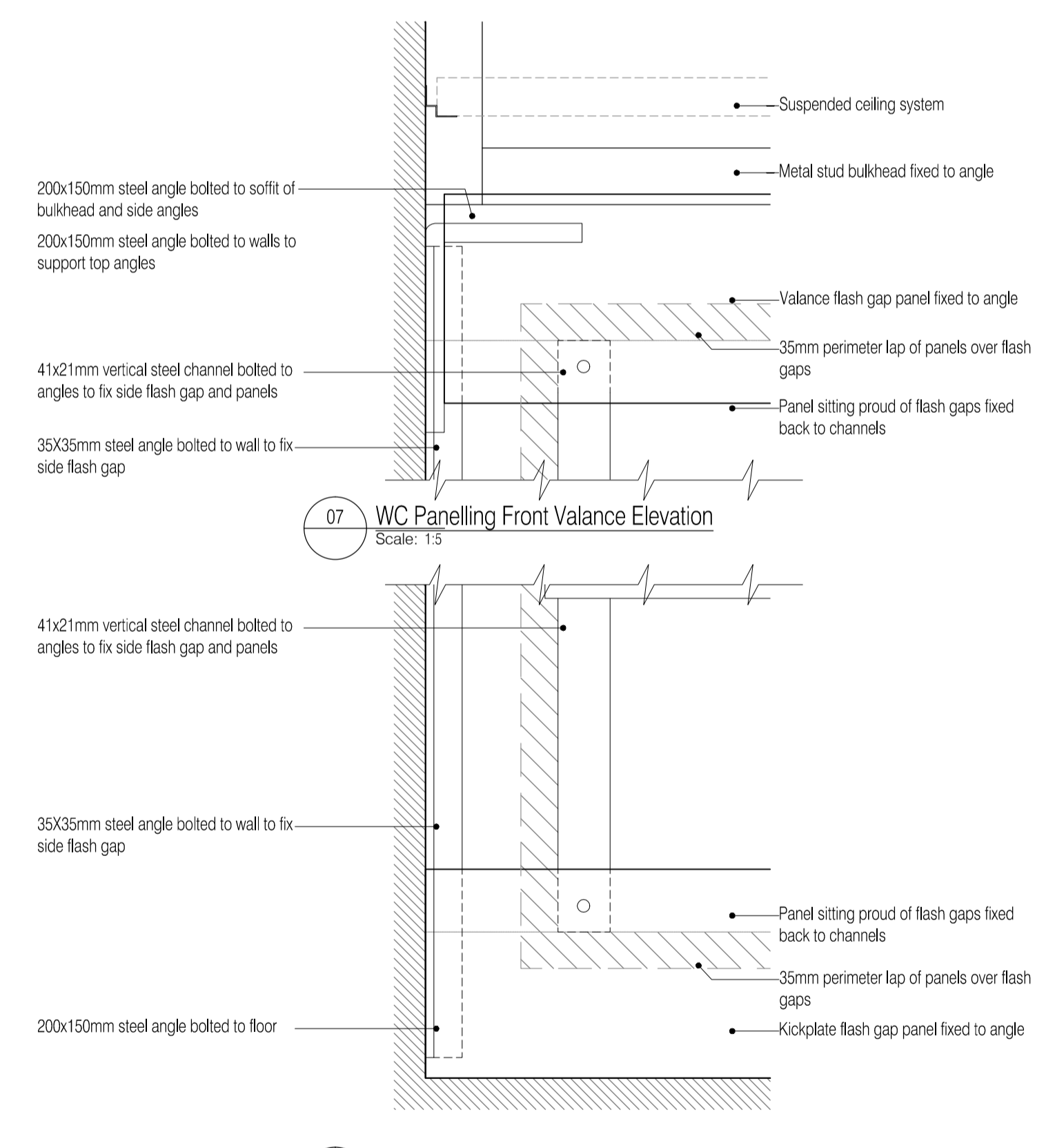
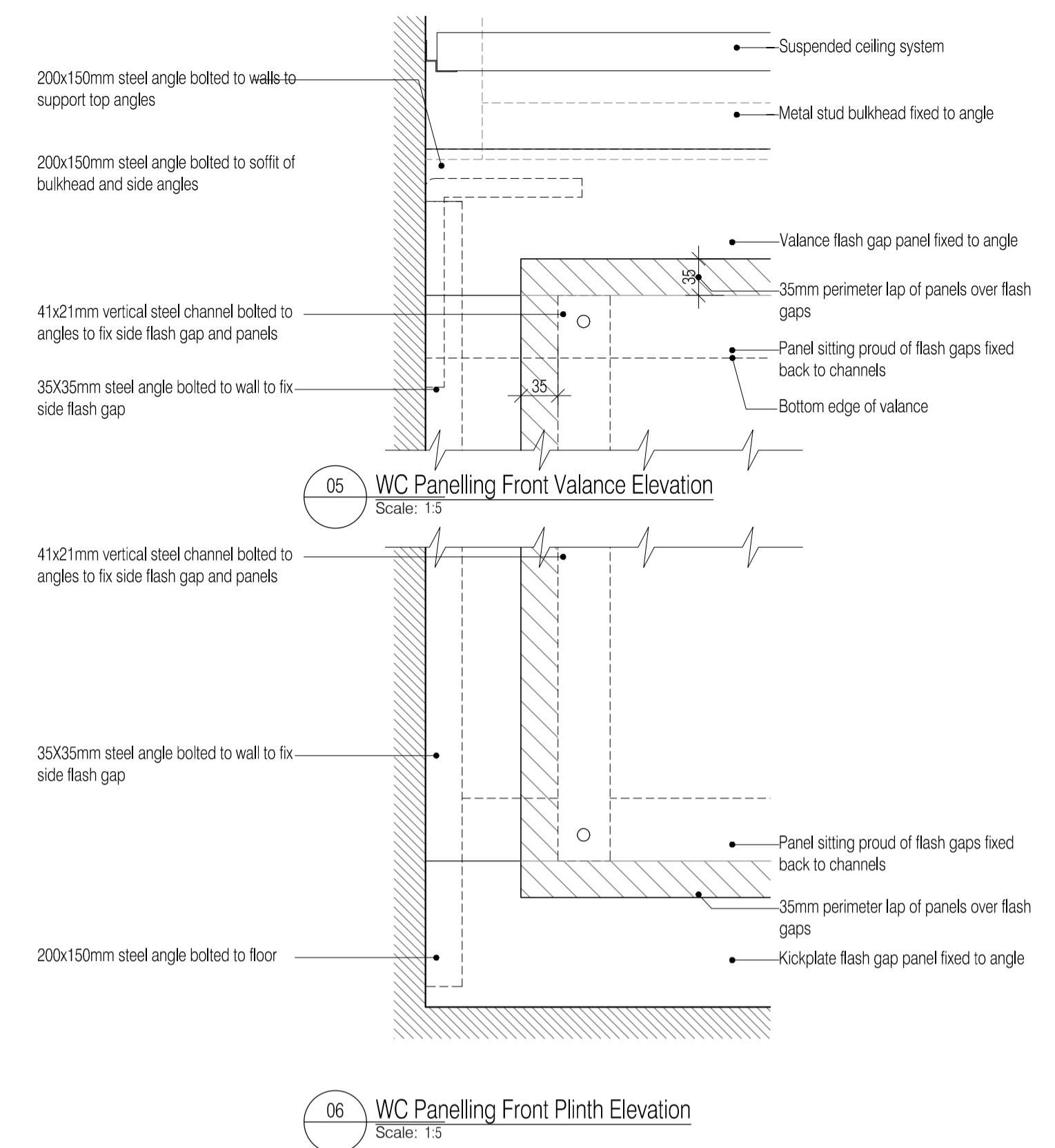
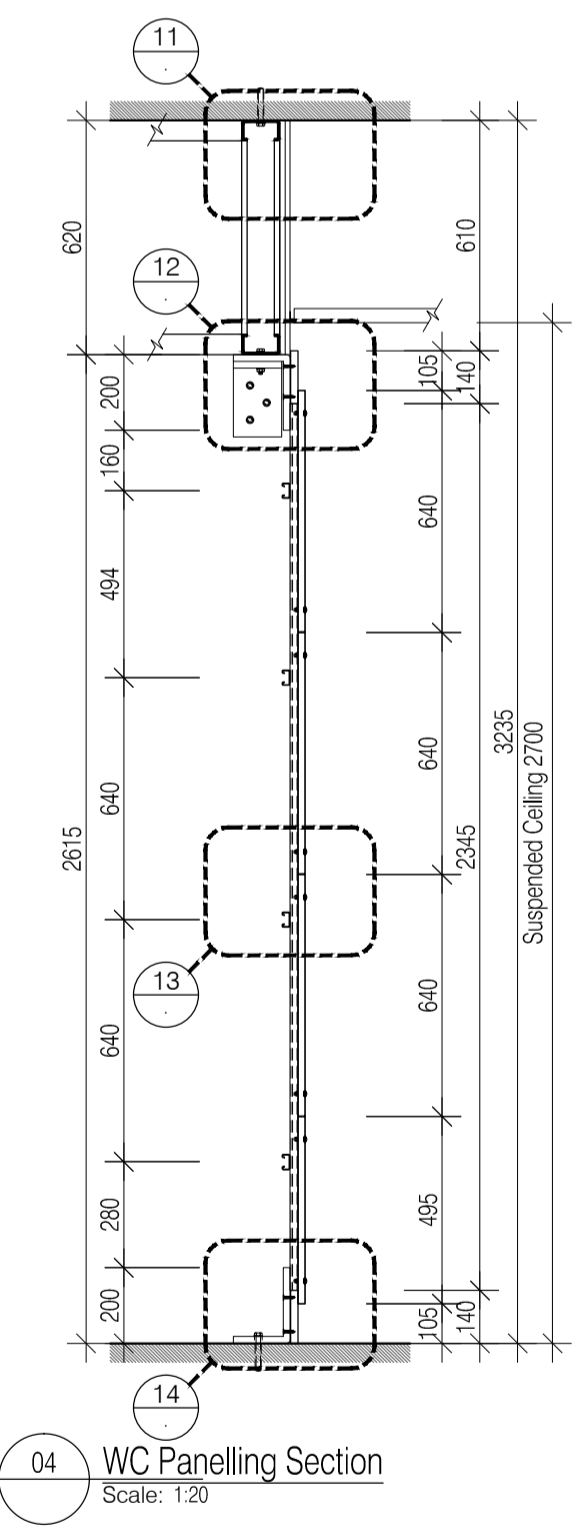
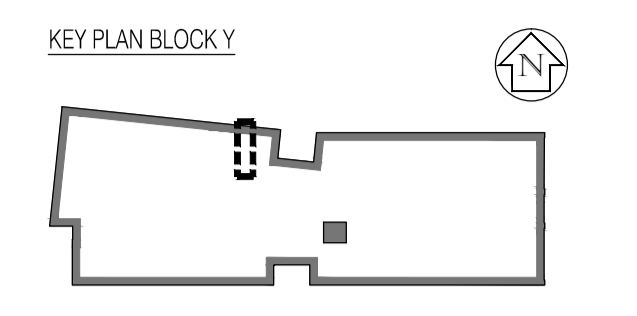


Panel details only. Sanitary fittings omitted for clarity.
Drawing to be read in conjunction with 222586-AY-416



NOTES: Do not scale this drawing. All dimensions to be checked on site prior to commencement or manufacture.



ISSUED FOR CONSTRUCTION

Rev	Date	By	Chk	Comment
A	21.09.09	AL		Issued for Construction

BRINGING IDEAS TO LIFE

FRANKHAM

Frankham Consultancy Group Limited
21 Perryman Road
Haywards Heath RH16 3TP
t 01444 444000 f 01444 455642
enquiries@frankham.com
www.frankham.com

Client:

Project Title: Woodside Inclusive Learning Campus

Drawing Title: WC Panelling System Full Visible Fixings

Drawn by: RKC	Scale: 1:10@A1	Date: Jul 09
Designed by: FCG	Checked by: CJ	Approved by: AC

File Ref.: 222586-AY-620-01	14/04/23 14:47:12
Drawing No. 222586-AY-620	Rev. A