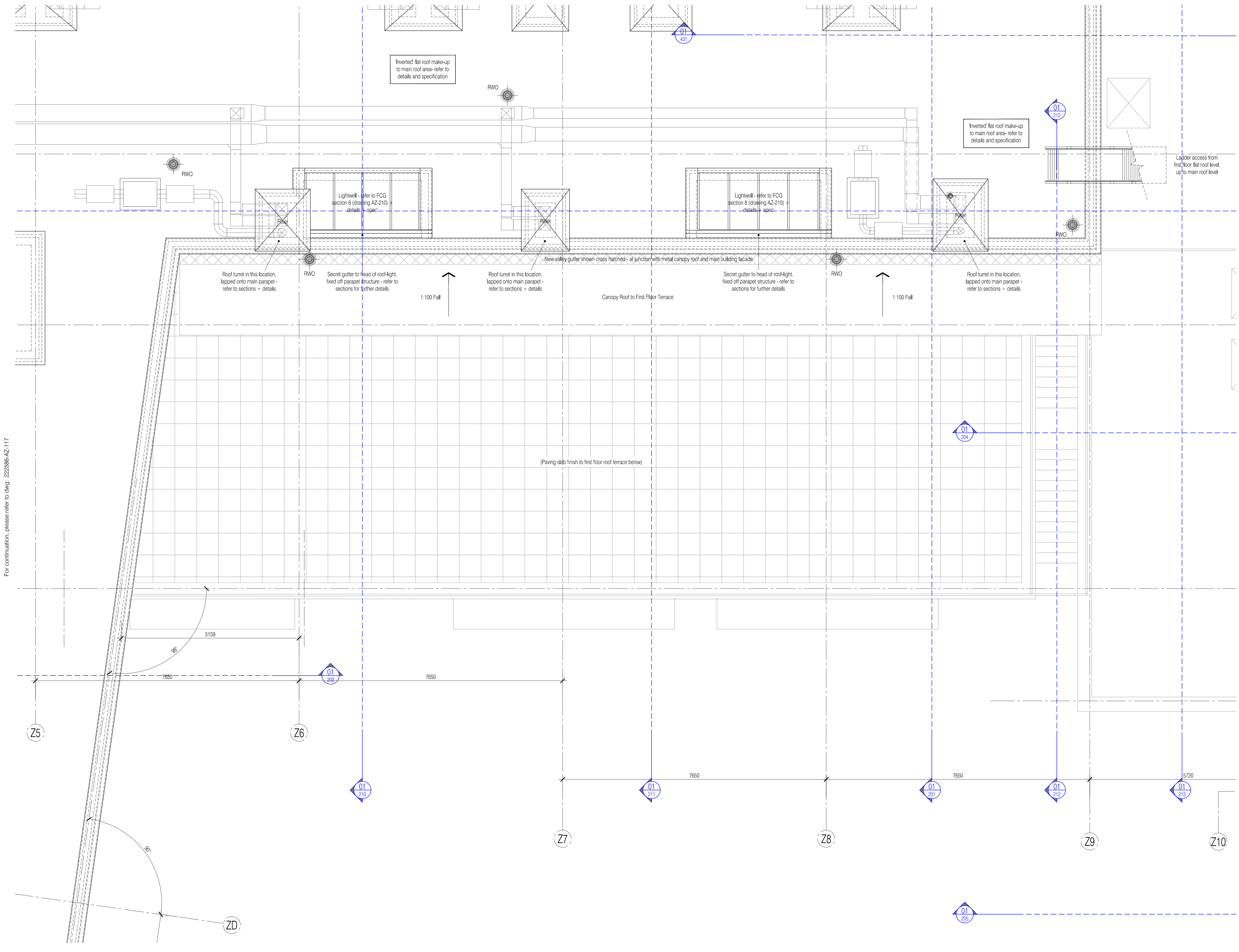
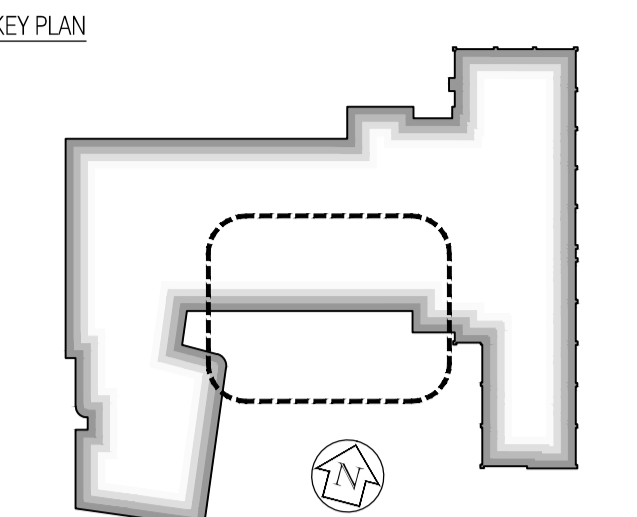


For continuation, please refer to dwg: 222586-AZ-115



NOTES: Do not scale this drawing. All dimensions to be checked on site prior to commencement or manufacture.



- General Notes**
- All concrete/steel frame elements are shown for reference only - All to be in strict accordance with Clark Smith Partnership Structural Engineers for designs, details and specifications.
 - All general Contractor Design elements are shown indicative of these drawings; they shall be as designed by the Specialist Sub-contractor, and their designs, details and specifications shall be to the prior approval of the 'Apollo Construction'. Specific reference should be made to the 'Nudura' Design Specification Manual, for the external envelope ICF wall system.
 - All mechanical, electrical, plumbing, ventilation, air conditioning, etc. are shown for reference only - All to be in strict accordance with 'Intech Aqua' Mechanical + Electrical Engineers designs, details and specifications.
 - The Hydrotherapy Pool and its associated plant is shown for reference only - All to be in strict accordance with Rainbow Pools' drawings; and to the prior approval of both the Mechanical + Electrical, and Structural Engineers.
 - The FF+E layouts have been included for reference only - All to be in strict accordance with 'Eurotek' drawings; and to the prior approval of the Structural Engineer regarding slab loadings.
 - The hoist layouts have been included for reference only - All to be in strict accordance with 'Ariq' drawings; and to the prior approval of both the Structural Engineer and the Acoustic Consultant, regarding slab loadings and transmission of sound, respectively.
 - For 'Fire Strategy', refer to FCG dwg's 'AZ-160/1'.
 - For 'Acoustic Strategy', refer to FCG dwg's 'AZ-165/6'.
 - For 'Builder's Work + Drainage', refer to FCG dwg's 'AZ-170/1/2'.
 - For 'Partition Strategy', refer to FCG dwg's 'AZ-180/1/2'.
 - Some insulation omitted for clarity. Refer to FCG detailed drawings - 'AZ-400' series, generally.
 - Denotes major steps in floor slab construction
 - Mansafe / Fall arrest system to be later designed and installed by the Main Contractor - this works, and the previously designed guard-railing has been taken out of the current scope of works.

ISSUED FOR CONSTRUCTION


Rev	Date	By	CHK	Comment
06	11.10.10	RKC	CJ	Apollo Issue - Final Coordination by Apollo
05	28.07.10	JAS	CJ	Detail added generally, Construction Issue.
04	08.06.10	JAS	CJ	Nudura ICF external wall system incorporated
03	17.05.10	JAS	CJ	Service hole/roof ladder rev'd as M+E co-ord
02	16.02.10	JAS	CJ	Roof-lights reduced in size to facilitate M+E
01	11.02.10	JAS	CJ	General amendments / NOV's / Co-ordination

BRINGING IDEAS TO LIFE



FRANKHAM

Frankham Consultancy Group Limited
 21 Perrymount Road
 Haywards Heath RH16 3TP
 t 01444 444000 f 01444 455642
 enquiry@frankham.com
 www.frankham.com

Client: 

Project Title:
 Woodside
 Inclusive Learning Campus

Drawing Title:
 General Arrangement Plan
 Sheet 5 of 7
 Roof Plan
 Block Z

Drawn by: RKC	Scale: 1:50@A1	Date: 05.01.10
Designed by: FCG	Checked by: CJ	Approved by: AC

File Ref.: 0200002006/0002006/02/24/04/10_16/JUSTON/RAE AND QA
 222586-AZ-115 - 06 - REV 06 - 14/01/2010 14/01/2010 14:04:23.15:46:41

Drawing No. 222586-AZ-118	Rev. 06
------------------------------	------------

For continuation, please refer to dwg: 222586-AZ-117

For continuation, please refer to dwg: 222586-AZ-119