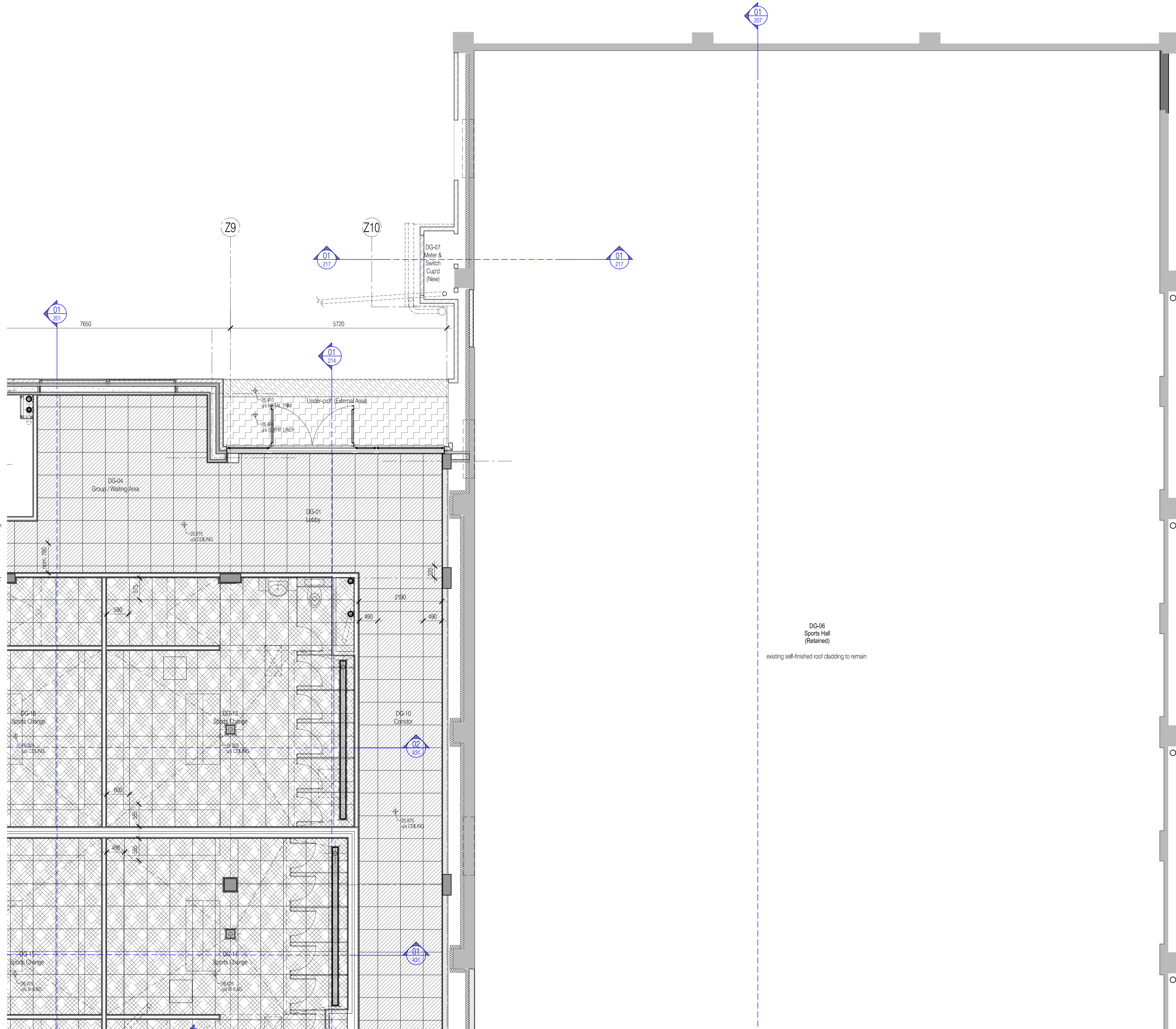


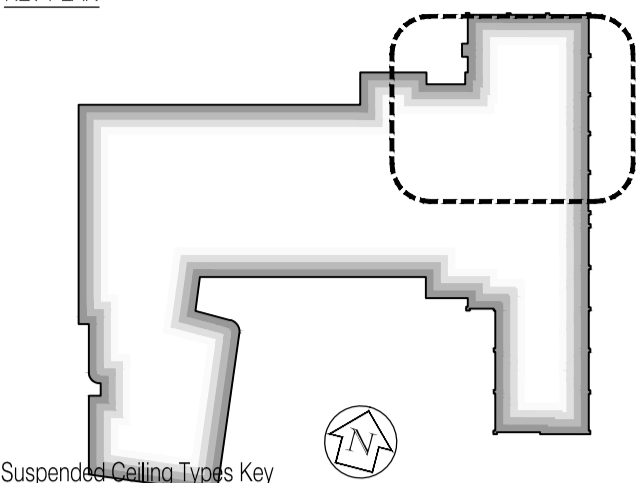
For continuation, please refer to dwg: 222586-AZ-127



For continuation, please refer to dwg: 222586-AZ-130

NOTES: Do not scale this drawing. All dimensions to be checked on site prior to commencement or manufacture.

KEY PLAN



Suspended Ceiling Types Key

NOTE: Where nothing shown assume painted concrete soffit as M60/150A.

	Type A Corridors Ecophon Focus A K40/115A
	Type B WC/Cleaner's Store Ecophon Hygiene Performance A K40/120
	Type C Classrooms Ecophon Combison Duo A K40/115B
	Type D Plasterboard finish K10/225
	Type E Perforated Plasterboard finish K10/225A
	Type F Pressed metal trim to under-side of suspended external walls H72/480
	Type G Insulated soffit-liner to external under-crofts K10/246

ISSUED FOR CONSTRUCTION

Rev	Date	By	Clk	Comment
03	11.10.10	RKC	CJ	Apollo Issue - Final Coordination by Apollo
02	17.03.10	JAS	CJ	Corridors, General + NOV amendments.
01	17.02.10	RKC	JAS	General update as GAs/NOVs. Levels added

BRINGING IDEAS TO LIFE



FRANKHAM

Frankham Consultancy Group Limited
21 Perrymount Road
Haywards Heath RH16 3TP
t 01444 444900 f 01444 455642
enquire@frankham.com
www.frankham.com

Client

Project Title

Woodside
Inclusive Learning Campus

Drawing Title

Reflected Ceiling Plan
Sheet 3 of 7
Ground Floor
Block Z

Drawn by: RKC	Scale: 1:50@A1	Date: 05.01.10
Designed by: FCG	Checked by: CJ	Approved by: AC

File Ref.: 01088802016-400200818100-001-2010-16 - JECTON RAKI AND SA
222586-AZ-017-001 - Rev 05-14-02-10-18 14/04/23 15:48:01

Drawing No. 222586-AZ-127	Rev. 03
------------------------------	------------