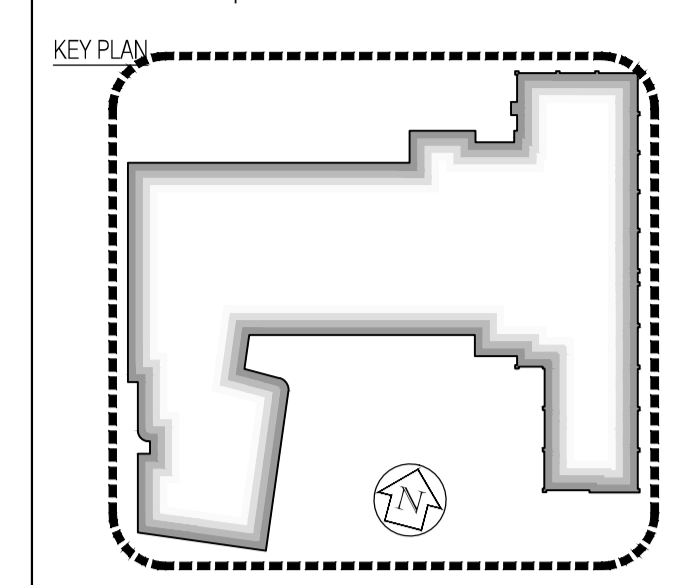


NOTES: Do not scale this drawing. All dimensions to be checked on site prior to commencement or manufacture.



Internal Partition Key:

- WA WA WA Plasterboard linings over envelope walls (K10/110) Dwg 441.4
- WB WB WB Basic grade dry-wall stud partition (K10/115) Dwg 460
- WC WC WC Up-graded dry-wall stud partition (K10/120) Dwg 461
- WD WD WD Jumbo stud dry-wall partition (K10/125) Dwg 462
- WE WE WE Jumbo boxed-stud dry-wall partition (K10/130) Dwg 463
- WF WF WF Staggered stud dry-wall partition (K10/135) Dwg 464
- WG WG WG Independent / Twin dry-wall partition (K10/140) Dwg 465.3
- WH WH WH Basic dry-linings over substrate walls (K10/145) Dwg 465.1
- WI WI WI Up-graded dry-linings to substrate walls (K10/150) Dwg 441.2
- WJ WJ WJ Plaster-board boxings to MEP services (K10/155) Dwg 465.2
- WK WK WK 100mm new blockwork substrate wall (F10/355)
- WL WL WL 140mm new blockwork substrate wall (F10/356)
- WM WM WM 215mm new blockwork substrate wall (F10/357)


**Concrete columns / shear walls (to Structural Engineer design)
 *Walls not high-lighted are as existing
 For structural information on the external envelope 'Nudural' ICF walls / concrete columns / concrete shear walls / slabs / etc. refer to 'Clark Smith Partnership' designs, details, and specifications.

Drawing to be read in conjunction with the following FCG drawings:
 General Arrangement Plan / Setting-out drawings - 'AZ-100-121'
 Reflected Ceiling Plan drawings - 'AZ-125-138'
 Fire Strategy drawings - 'AZ-160-161'
 Acoustic Strategy drawings - 'AZ-165-166'
 Builder's Work + Drainage Layout drawings - 'AZ-170-172'
 General Arrangement Section drawings - 'AZ-200-217'
 General Arrangement Elevation drawings - 'AZ-300-302'
 Internal Partition Details - 'AZ-400 Series'
 Ceiling Details - 'AZ-400 Series'
 NBS (Key Work-Sections) - 'K10 + F10'

ISSUED FOR CONSTRUCTION

Rev	Date	By	Chk	Comment
03	19.11.10	RKC	CJ	Apollo Issue - Final Coordination by Apollo
				Legends updated as part of partition package
02	11.10.10	RKC	CJ	Apollo Issue - Final Coordination by Apollo
01	10.09.10	JAS	CJ	NBS refs added to key. Issue for Construction

BRINGING IDEAS TO LIFE



FRANKHAM

Frankham Consultancy Group Limited
 21 Perrymount Road
 Hayward Heath RH16 3TP
 t 01444 444000 f 01444 455642
 enquire@frankham.com
 www.frankham.com

Client



Project Title

Woodside
 Inclusive Learning Campus

Drawing Title

Internal Partition Layout
 Level 2
 (High-Level Plan over Special Hall / Atrium)
 Block Z

Drawn by: RKC	Scale: NTS	Date: 05.08.10
Designed by: FCG	Checked by: CJ	Approved by: AC

File Ref.: 0222586-AZ-182	16/04/23.16:11:03
Drawing No. 222586-AZ-182	Rev. 03