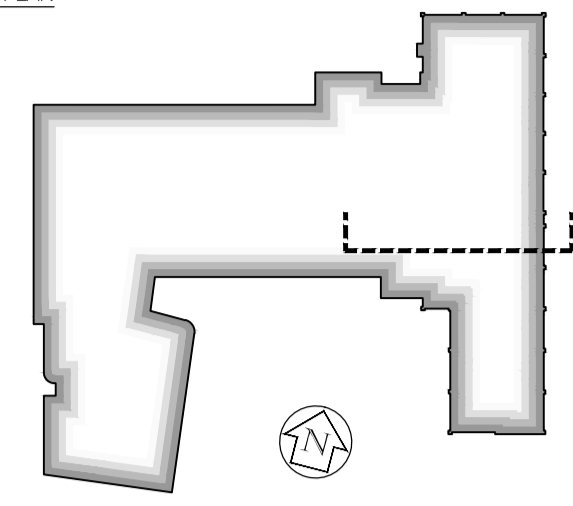
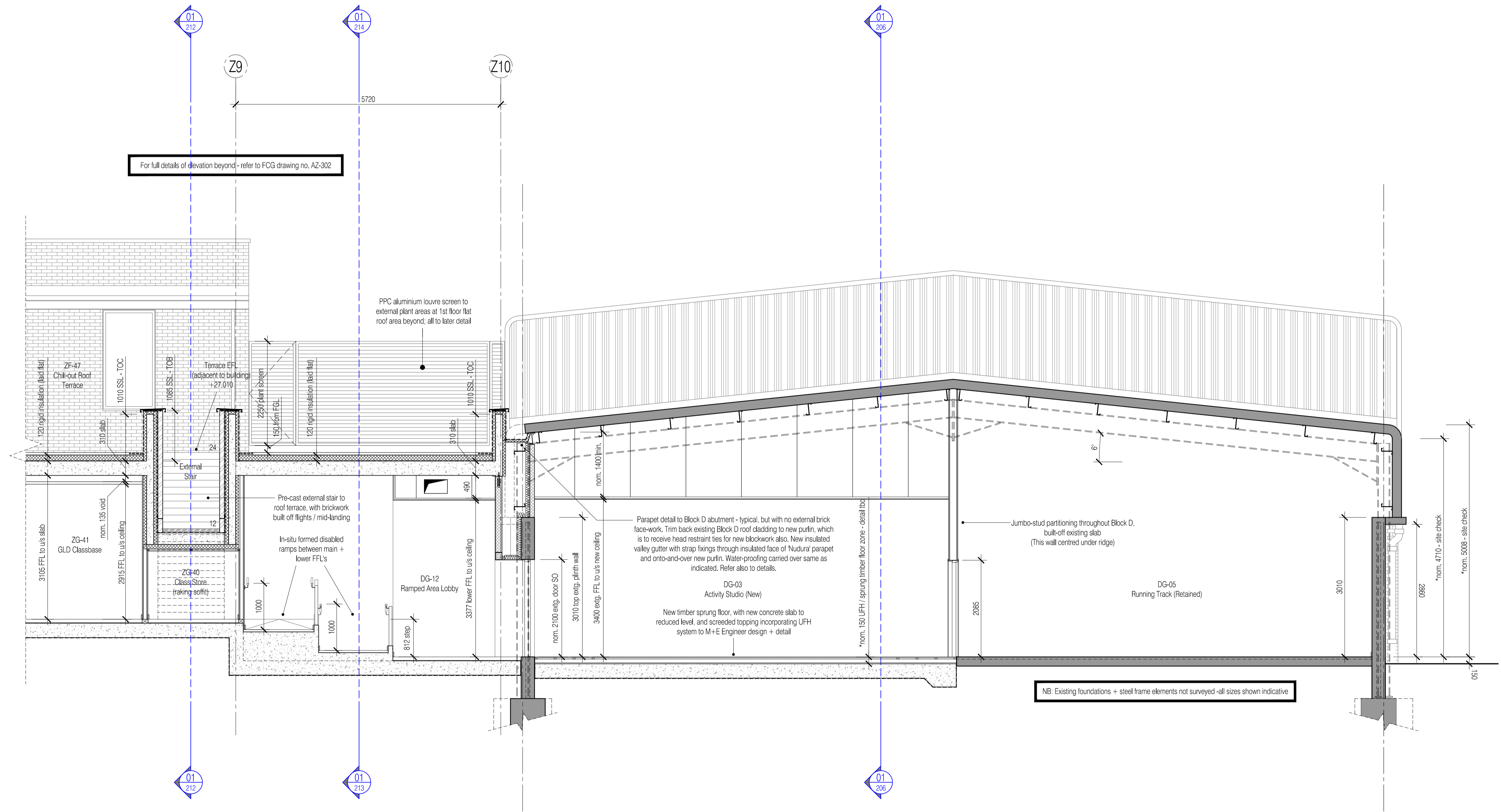


NOTES: Do not scale this drawing. All dimensions to be checked on site prior to commencement or manufacture.

KEY PLAN



- General Notes**
1. All concrete/steelwork to be confirmed by Structural Engineer.
  2. All concrete/steelwork shown indicative of sizes and locations only.
  3. All structural information to be in strict accordance with the Structural Engineer's design, details and specification.
  4. All mechanical, electrical, plumbing and ventilation information to be in strict accordance with the Mechanical and Electrical Engineer's design, details and specification.



ISSUED FOR CONSTRUCTION

Rev	Date	By	Clk	Comment
02	11.10.10	RKC	CJ	Apollo Issue - Final Coordination by Apollo
01	08.06.10	JAS	CJ	Nudura ICF walls / inverted roofs / slab ths

BRINGING IDEAS TO LIFE

  
**FRANKHAM**  
  
**Frankham Consultancy Group Limited**  
 21 Perrymount Road  
 Hayward Heath RH16 3TP  
 t 01444 444900 f 01444 455642  
 enquiry@frankham.com  
 www.frankham.com

Client: 

Project Title: Woodside  
Inclusive Learning Campus

Drawing Title: General Arrangement Section  
Section 4 (Facing Grid-line ZF, Thro. Block D)  
Block Z

Drawn by: RKC	Scale: 1:50@A1	Date: 29.03.10
Designed by: FCG	Checked by: CJ	Approved by: AC

File Ref.: 0:\000\22586-AZ-204\01\02\AZ-204-02.dwg - Rev:10 14/03/10 15:11:33

Drawing No. **222586-AZ-204** Rev. **02**