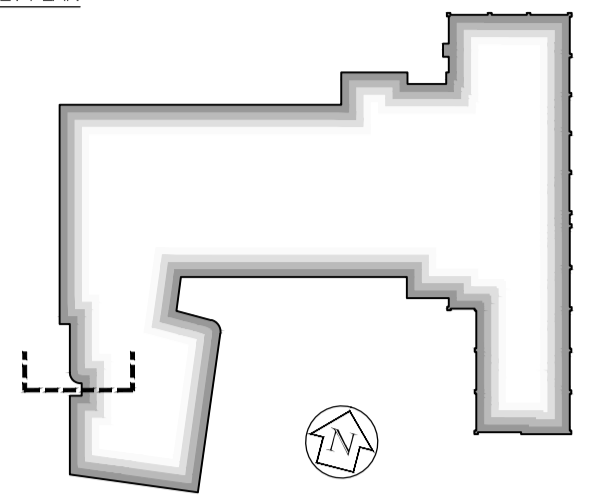


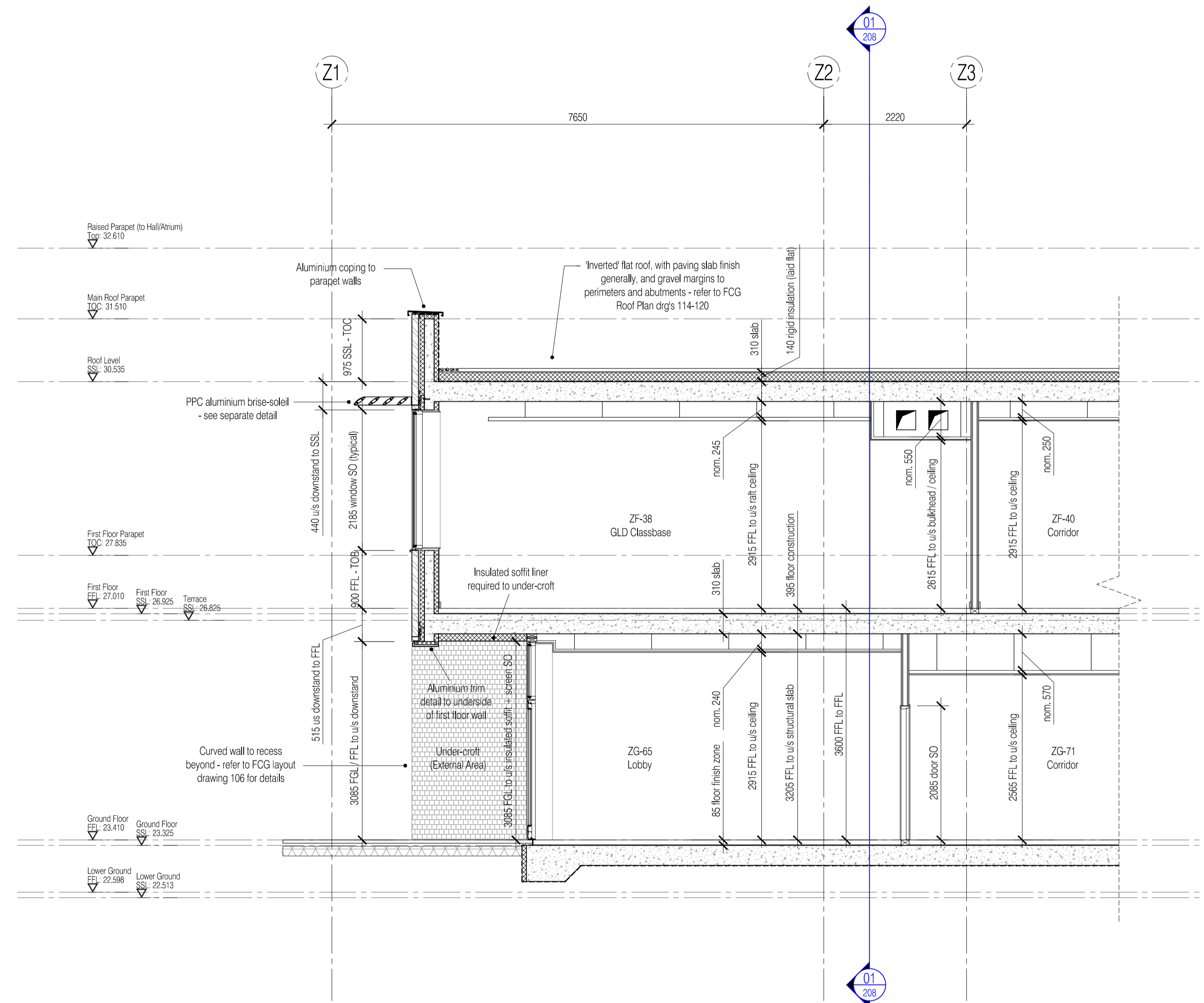
NOTES: Do not scale this drawing. All dimensions to be checked on site prior to commencement or manufacture.

KEY PLAN



General Notes

1. All concrete/steelwork to be confirmed by Structural Engineer.
2. All concrete/steelwork shown indicative of sizes and locations only.
3. All structural information to be in strict accordance with the Structural Engineer's design, details and specification.
4. All mechanical, electrical, plumbing and ventilation information to be in strict accordance with the Mechanical and Electrical Engineer's design, details and specification.



ISSUED FOR CONSTRUCTION

Rev	Date	By	CHK	Comment
02	11.10.10	RKC	CJ	Apollo Issue - Final Coordination by Apollo
01	08.06.10	JAS	CJ	Nudura ICF walls / inverted roofs / slab fms

BRINGING IDEAS TO LIFE



FRANKHAM

Frankham Consultancy Group Limited
 21 Perrymount Road
 Haywards Heath RH16 3TP
 t 01444 444900 f 01444 455642
 enquire@frankham.com
 www.frankham.com

Client



APOLLO EDUCATION

Project Title

Woodside
Inclusive Learning Campus

Drawing Title

General Arrangement Section
Section 12 (Facing Grid-line ZC)
Block Z

Drawn by: RKC	Scale: 1:50@A1	Date: 15.04.10
Designed by: FCG	Checked by: CJ	Approved by: AC

File Ref.: 01000022586-AZ-215-SECTION12-02-SECTION12 22586-AZ-215-02 - REV 02 14/02/10	14/04/23 16:12:51
Drawing No. 222586-AZ-215	Rev. 02