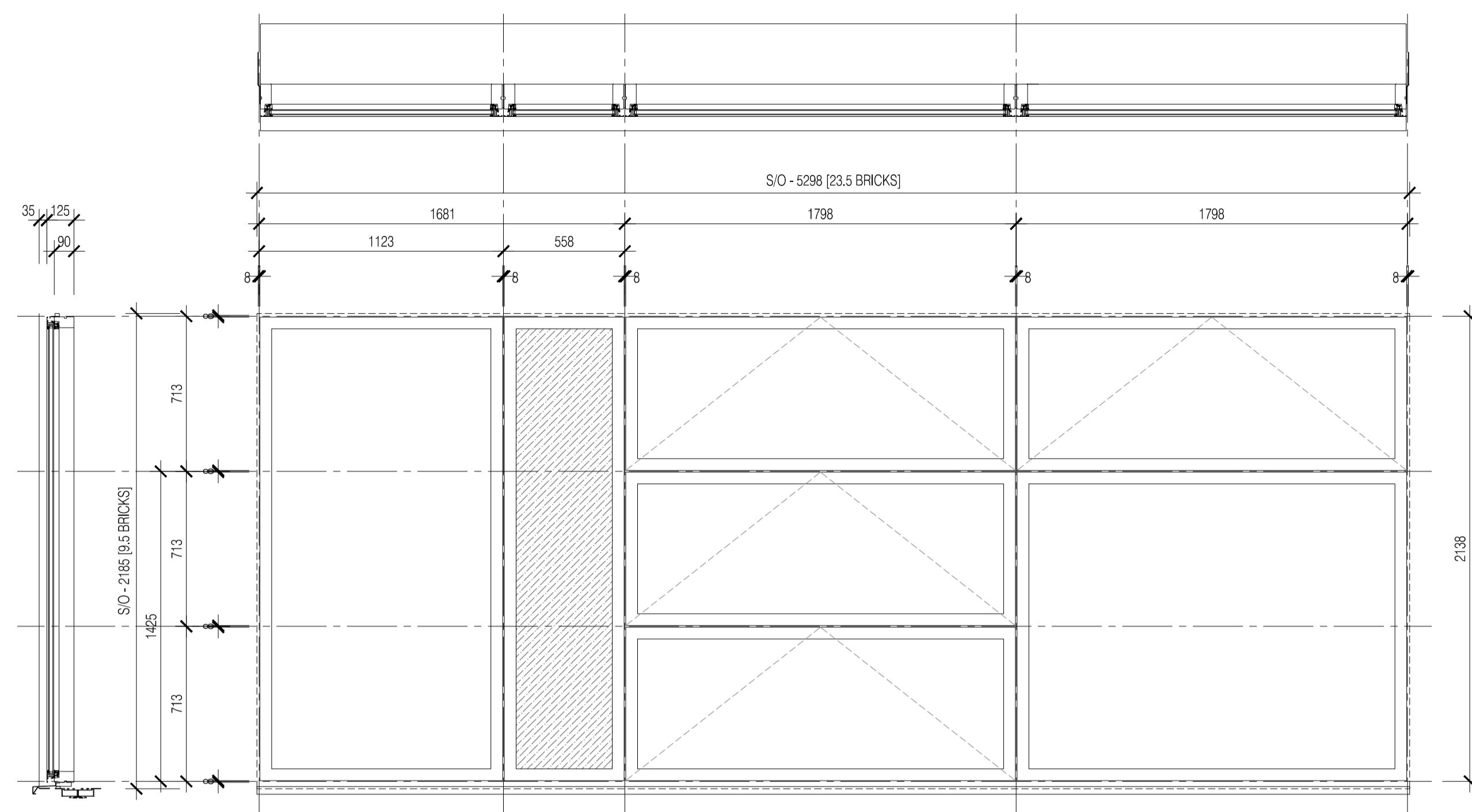
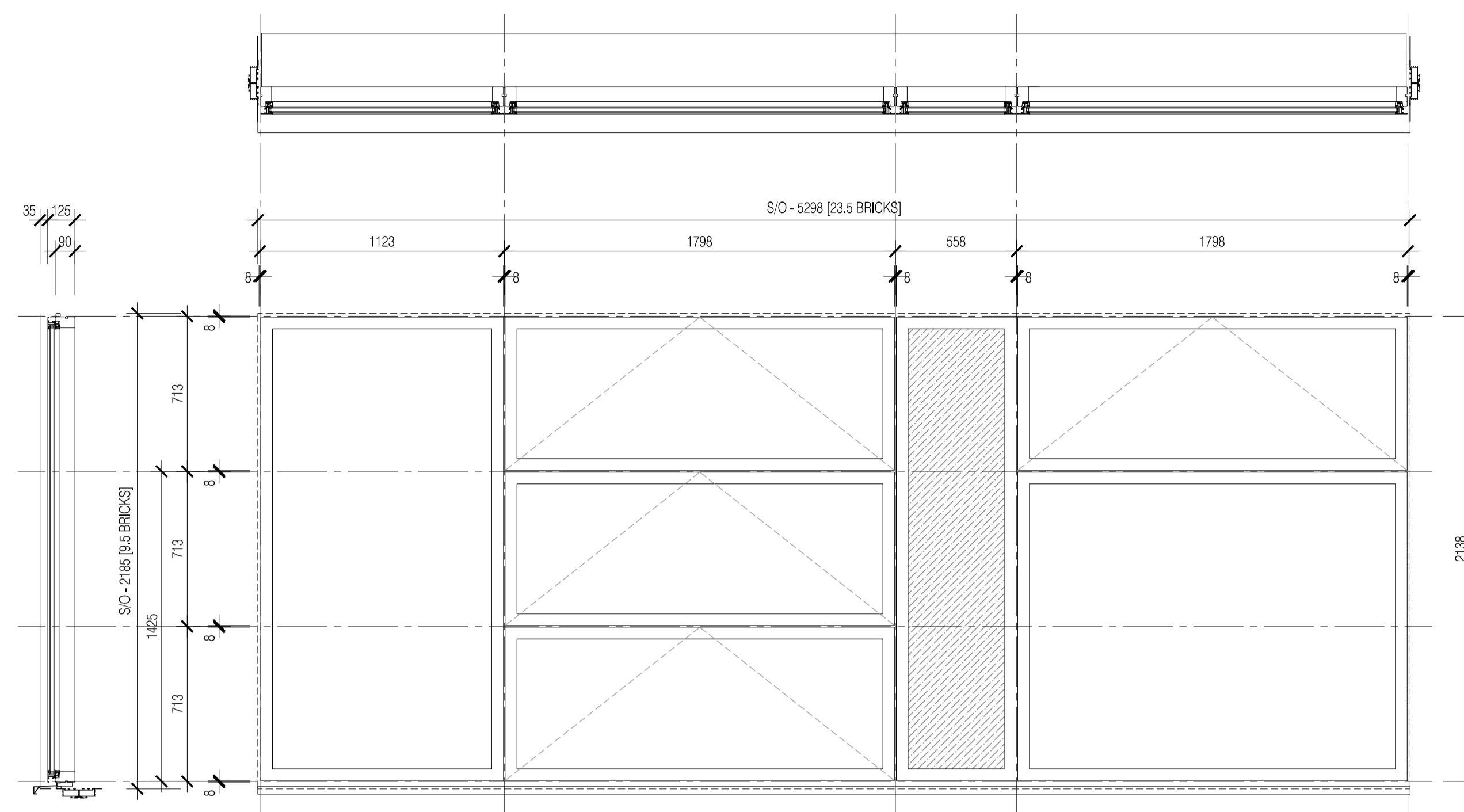


NOTES: Do not scale this drawing. All dimensions to be checked on site prior to commencement or manufacture.



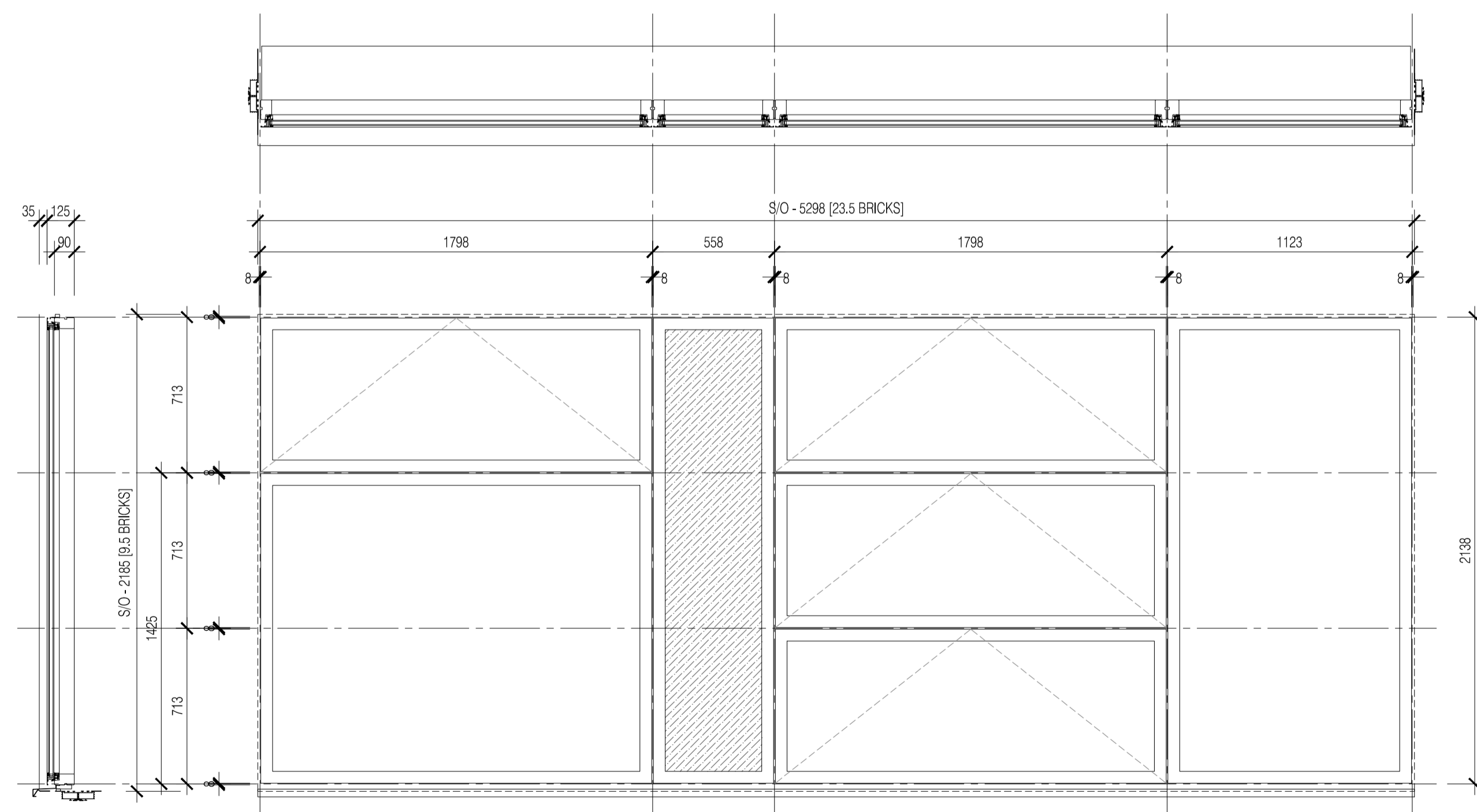
NBS Specification	S/O	Window Reference
L10 & L40	5298mm Wide 2185mm High	W-ZG-61 W-ZG-66 W-ZF-38



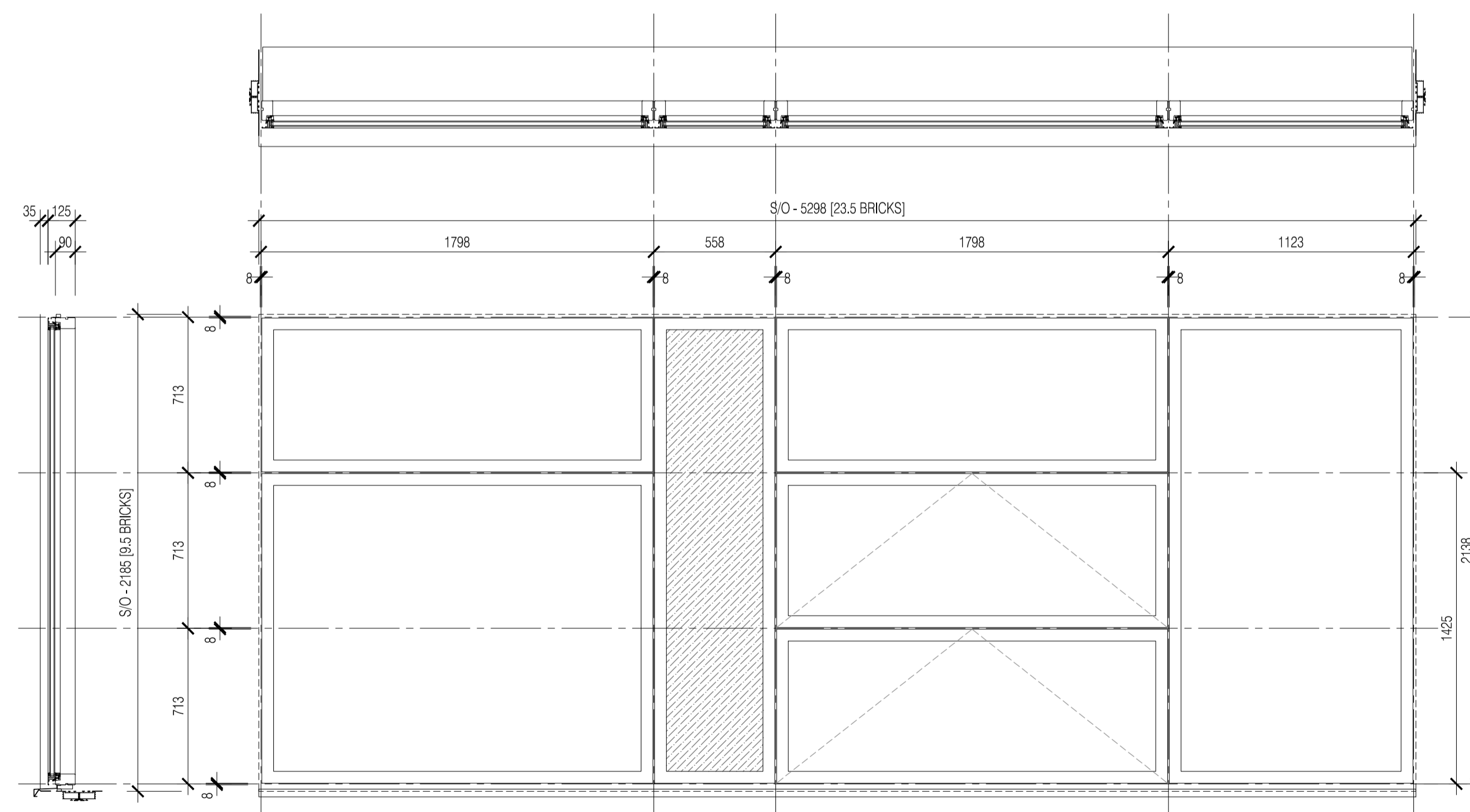
NBS Specification	S/O	Window Reference
L10 & L40	5298mm Wide 2185mm High	W-ZF-25 W-ZF-31 W-ZF-39

01 WINDOW ASSEMBLY TYPE 01
Scale: 1:20

03 WINDOW ASSEMBLY TYPE 03
Scale: 1:20



NBS Specification	S/O	Window Reference
L10 & L40	5298mm Wide 2185mm High	W-ZF-30 W-ZF-37



NBS Specification	S/O	Window Reference
L10 & L40	5298mm Wide 2185mm High	W-ZF-01 W-ZF-04 W-ZF-05 W-ZF-08 W-ZF-10 W-ZF-13 W-ZF-16 W-ZF-49

04 WINDOW ASSEMBLY TYPE 04
Scale: 1:20

05 WINDOW ASSEMBLY TYPE 05
Scale: 1:20

NB: This dwg remains the subject of checking and finalisation pending information from Velfac required to complete

ISSUED FOR CONSTRUCTION

Rev	Date	By	Chk	Comment
01	11.10.10	RKC	CJ	Apollo Issue - Final Coordination by Apollo

BRINGING IDEAS TO LIFE



FRANKHAM

Frankham Consultancy Group Limited
21 Parnymount Road
Haywards Heath RH16 3TP
t 01444 444000 f 01444 455642
enquire@frankham.com
www.frankham.com

Client



Project Title

Woodside
Inclusive Learning Campus

Drawing Title

Block Z
Window Schedule
Sheet 1

Drawn by: RKC	Scale: 1:20@A1	Date: 26.02.10
Designed by: FCG	Checked by: CJ	Approved by: AC

File Ref.: 0100000758-400000018-000-ARCH-001-00-000-018
2009-AC-002-010 - REV 05-14/02/10 14/04/23 16:17:52

Drawing No. 222586-AZ-600	Rev. 01
------------------------------	------------