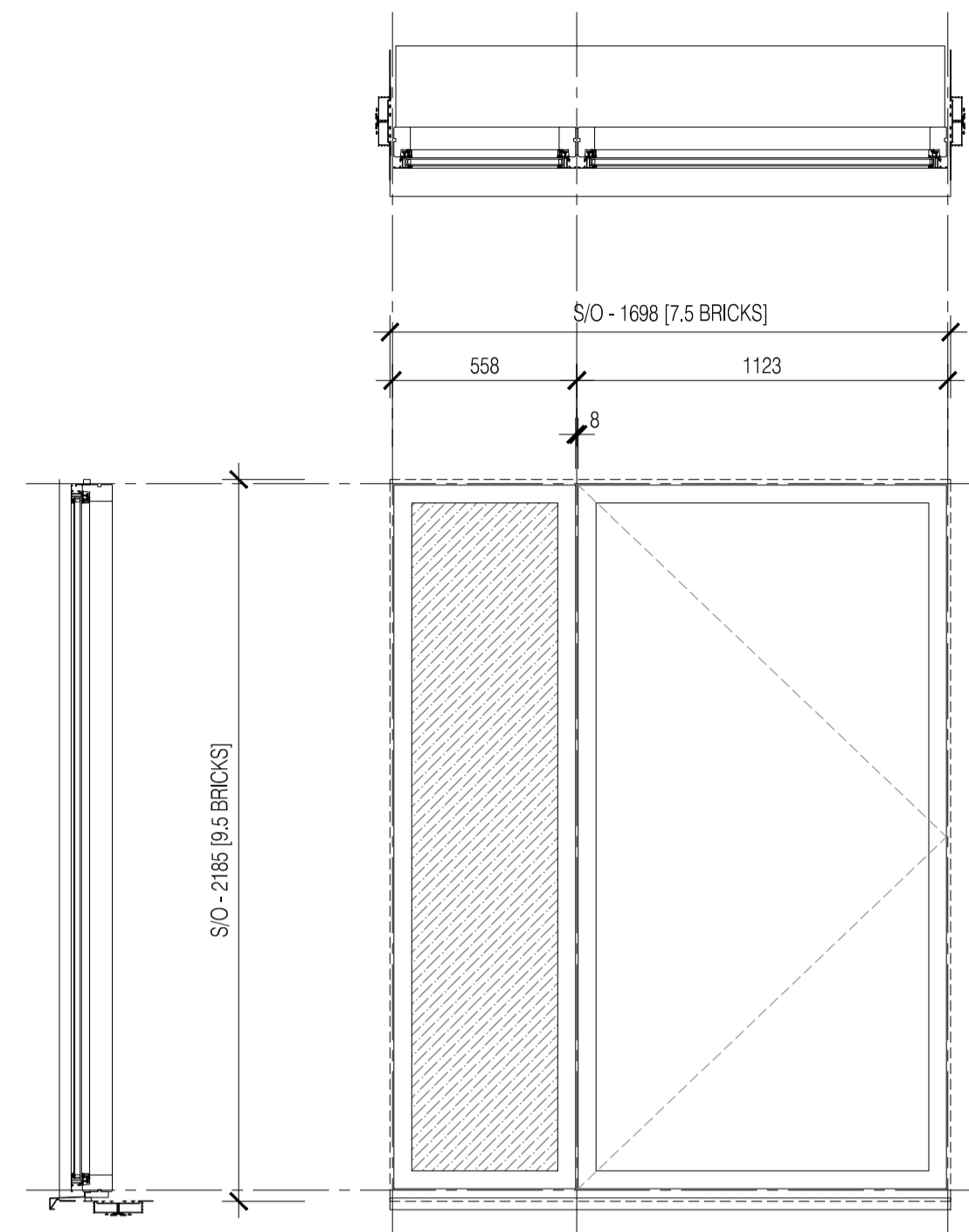
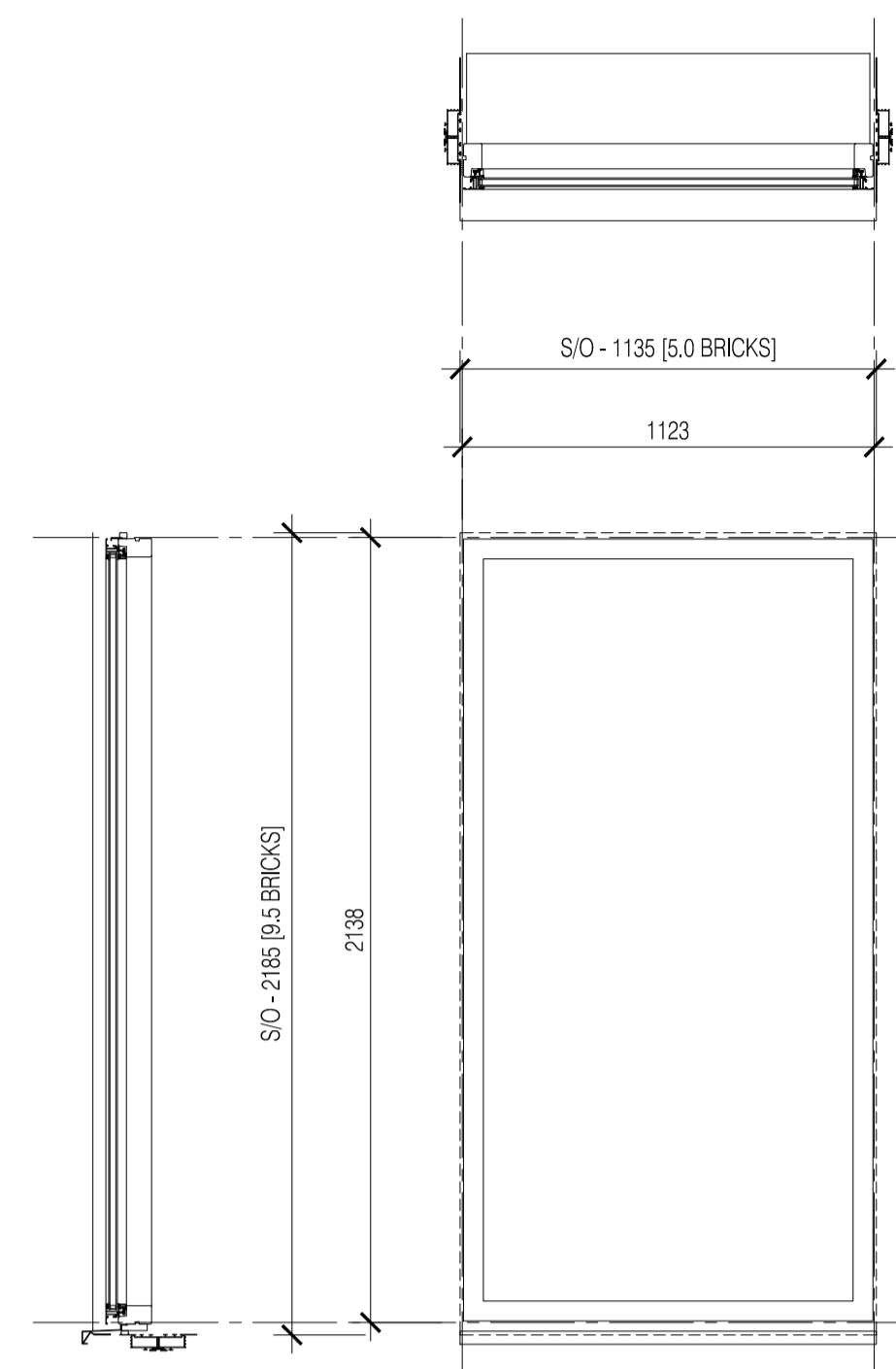


NOTES: Do not scale this drawing. All dimensions to be checked on site prior to commencement or manufacture.



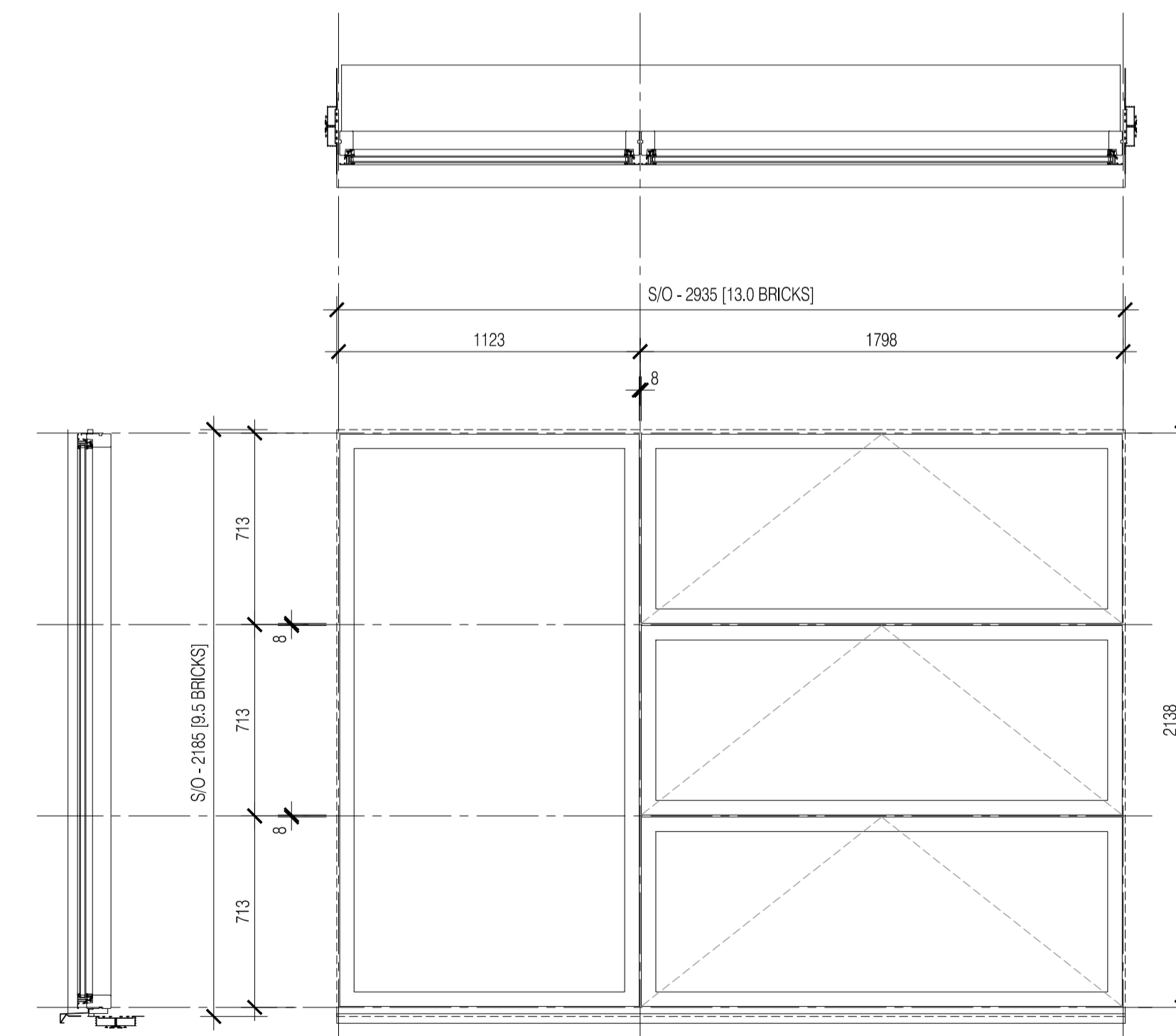
NBS Specification	S/O	Window Reference
L10 & L40	1698mm Wide 2185mm High	W-ZG-10 W-ZG-13 W-DG-02



NBS Specification	S/O	Window Reference
L10 & L40	1135mm Wide 2185mm High	W-ZF-18 W-ZF-19 W-ZF-45 W-ZF-69 W-ZF-70

07 WINDOW ASSEMBLY TYPE 07  
Scale:1:20

08 WINDOW ASSEMBLY TYPE 08  
Scale:1:20



NBS Specification	S/O	Window Reference
L10 & L40	2935mm Wide 2185mm High	W-ZG-05/01 W-ZG-52 W-ZF-35

10 WINDOW ASSEMBLY TYPE 10  
Scale:1:20

NB: This dwg remains the subject of checking and finalisation pending information from Velfac required to complete

ISSUED FOR CONSTRUCTION

Rev	Date	By	Clk	Comment
01	11.10.10	RKC	CJ	Apollo Issue - Final Coordination by Apollo

BRINGING IDEAS TO LIFE



**FRANKHAM**

Frankham Consultancy Group Limited  
21 Perrymount Road  
Haywards Heath RH16 3TP  
t 01444 444900 f 01444 455642  
enquiries@frankham.com  
www.frankham.com

Client



APOLLO EDUCATION

Project Title

Woodside  
Inclusive Learning Campus

Drawing Title

Block Z  
Window Schedule  
Sheet 2

Drawn by: RKC	Scale: 1:20@A1	Date: 26.02.10
Designed by: FCG	Checked by: CJ	Approved by: AC

File Ref.: 0200000208-4000000008-0002-ARCH-00-08-SCHEDULES 14/04/23 15:17:52

Drawing No. 222586-AZ-601	Rev. 01
------------------------------	------------