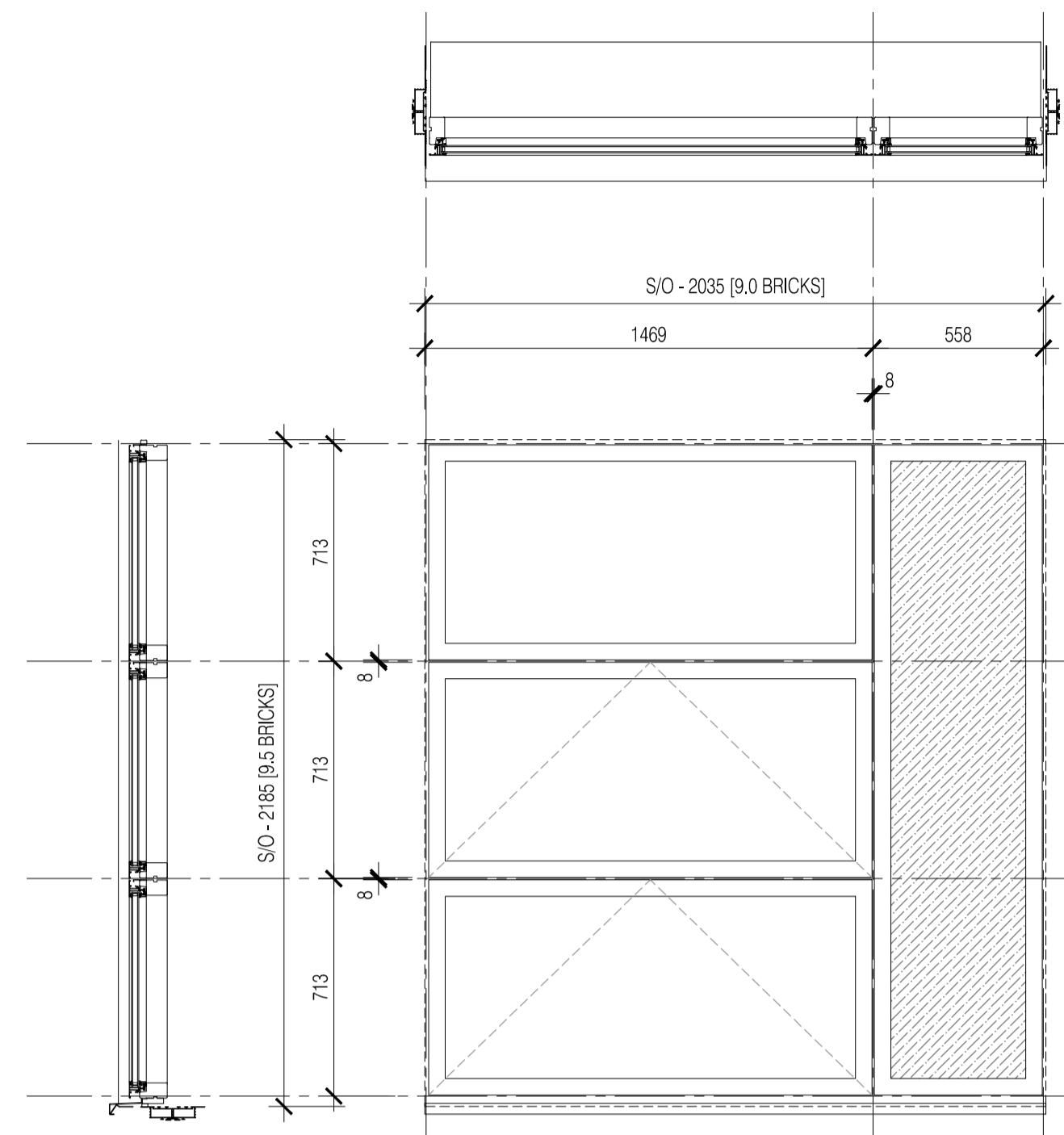


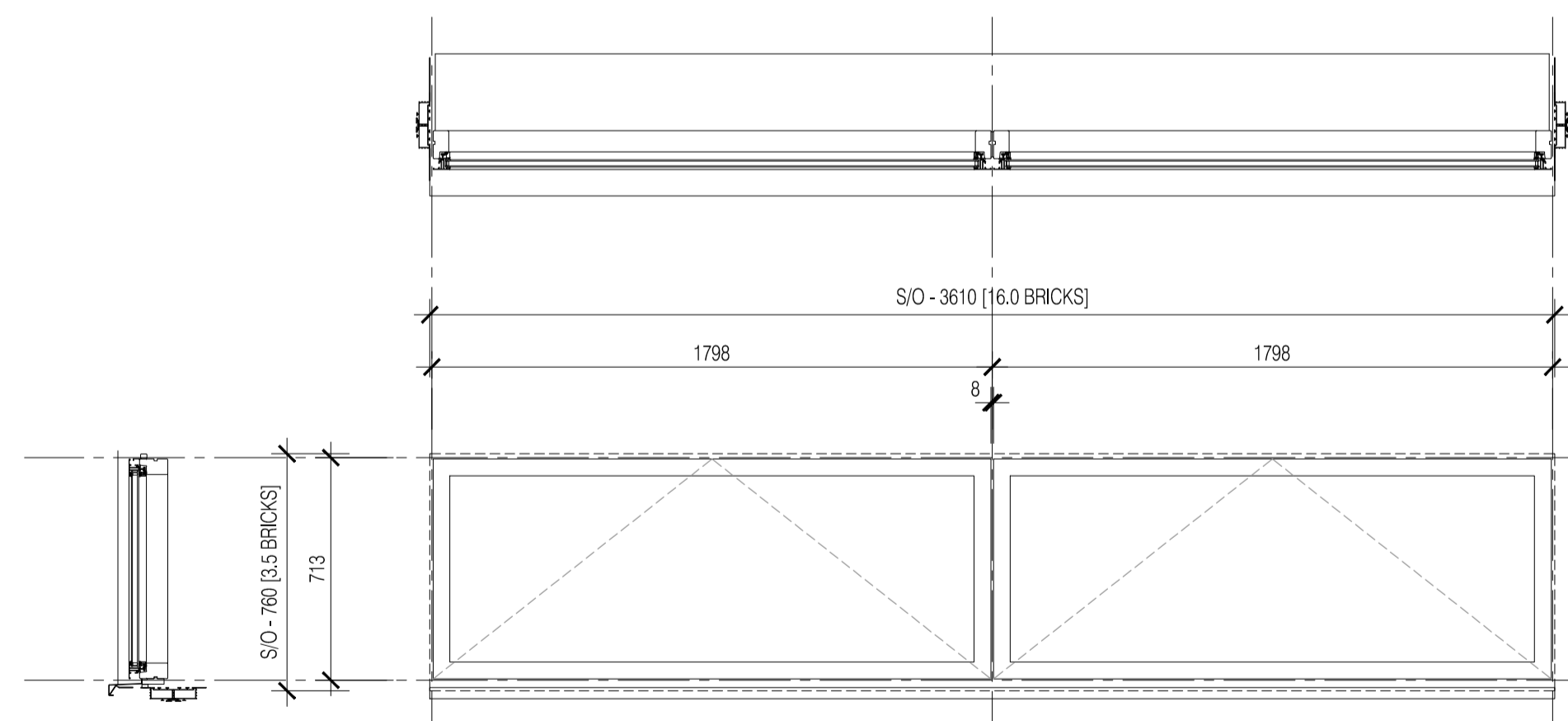
NBS Specification	S/O	Window Reference
L10 & L40	2373mm Wide 2185mm High	W-ZG-06 W-ZG-09 W-ZG-15

13 WINDOW ASSEMBLY TYPE 13
Scale:1:20



NBS Specification	S/O	Window Reference
L10 & L40	2035mm Wide 2185mm High	W-ZF-24

13a WINDOW ASSEMBLY TYPE 13A
Scale:1:20



NBS Specification	S/O	Window Reference
L10 & L40	3610mm Wide 760mm High	W-ZG-19 W-DG-04

14 WINDOW ASSEMBLY TYPE 14
Scale:1:20

NOTES: Do not scale this drawing. All dimensions to be checked on site prior to commencement or manufacture.

NB: This dwg remains the subject of checking and finalisation pending information from Velfac required to complete

ISSUED FOR CONSTRUCTION

Rev	Date	By	Clk	Comment
01	11.10.10	RKC	CJ	Apollo Issue - Final Coordination by Apollo



Frankham Consultancy Group Limited
21 Parnmount Road
Haywards Heath RH16 3TP
t 01444 444900 f 01444 455642
enquire@frankham.com
www.frankham.com

Client: 

Project Title:
Woodside
Inclusive Learning Campus

Drawing Title:
Block Z
Window Schedule
Sheet 3

Drawn by: RKC	Scale: 1:20@A1	Date: 26.02.10
Designed by: FCG	Checked by: CJ	Approved by: AC

File Ref.: 020802286-4002582636-DW-CAMPAIGN_WINDOW_SCHEDULES
2008-04-22 2010 - REV 01-14-02 11193 14/04/23 15:18:05

Drawing No. 222586-AZ-602	Rev. 01
------------------------------	------------