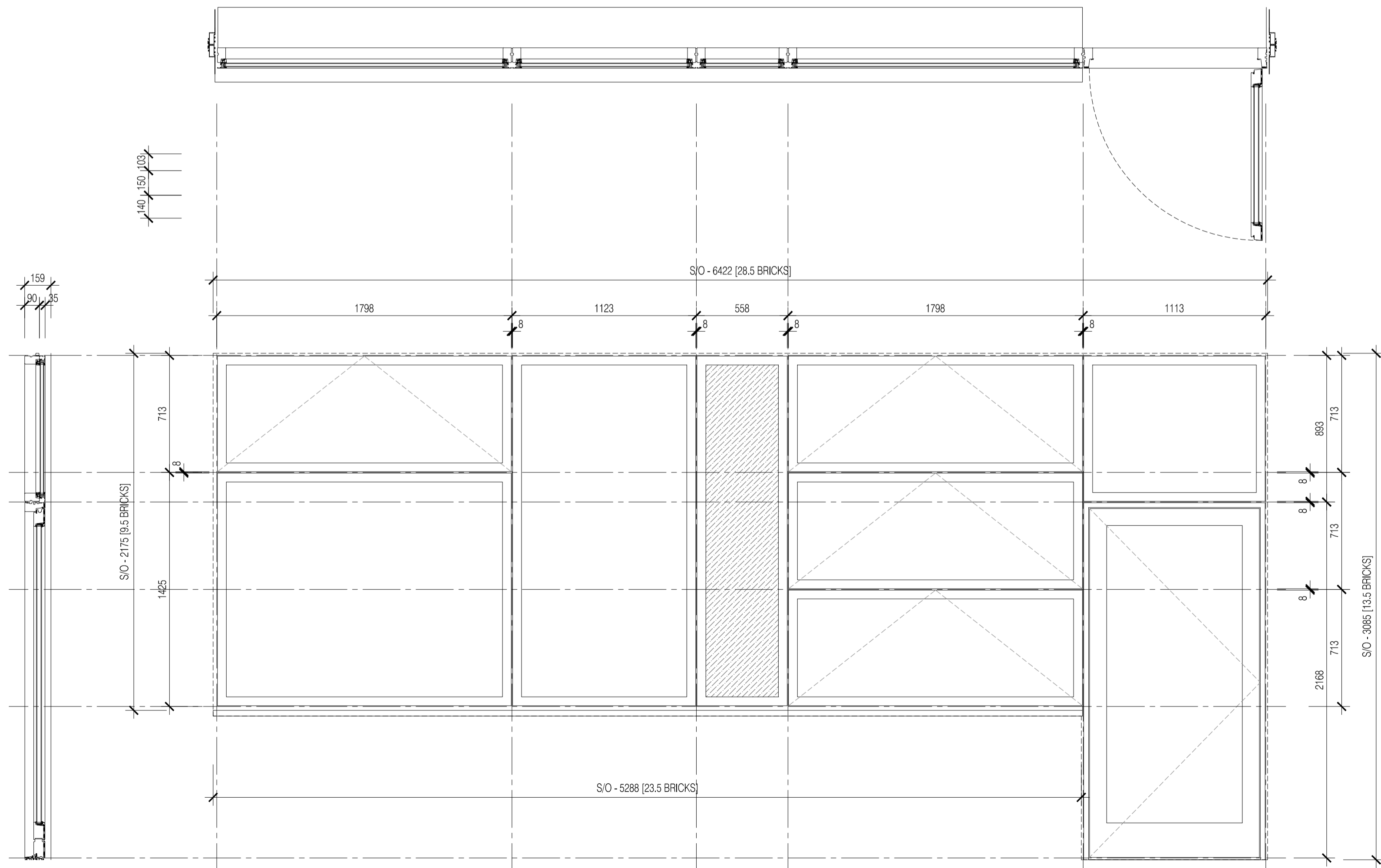


15 WINDOW ASSEMBLY TYPE 15  
Scale: 1:20

NBS Specification	S/O	Window Reference
L10, L20 & L40	6422mm Wide 3085mm High	W-ZG-41 W-ZG-58

NBS Specification	S/O	Window Reference
L10, L20 & L40	6422mm Wide 3085mm High	W-ZG-42 W-ZG-45



16 WINDOW ASSEMBLY TYPE 16  
Scale: 1:20


NOTES: Do not scale this drawing. All dimensions to be checked on site prior to commencement or manufacture.

NB: This dwg remains the subject of checking and finalisation pending information from Velfac required to complete

ISSUED FOR CONSTRUCTION

Riv	Date	By	Clk	Comment
01	11.10.10	RKC	CJ	Apollo Issue - Final Coordination by Apollo

**BRINGING IDEAS TO LIFE**



**FRANKHAM**

Frankham Consultancy Group Limited  
21 Perrymount Road  
Haywards Heath RH16 3TP  
t 01444 444900 f 01444 455642  
enquiries@frankham.com  
www.frankham.com

Client



**APOLLO EDUCATION**

Project Title

Woodside  
Inclusive Learning Campus

Drawing Title

Block Z  
Window Schedule  
Sheet 4

Drawn by: RKC	Scale: 1:20@A1	Date: 26.02.10
Designed by: FCG	Checked by: CJ	Approved by: AC

File Ref.: 0100002026-400500E081002ZARCH01\_001\_SCHEDULE16  
222586-AZ-001 - REV 01-1402101011 14/04/23 15:18:14

Drawing No. 222586-AZ-603	Rev. 01
------------------------------	------------