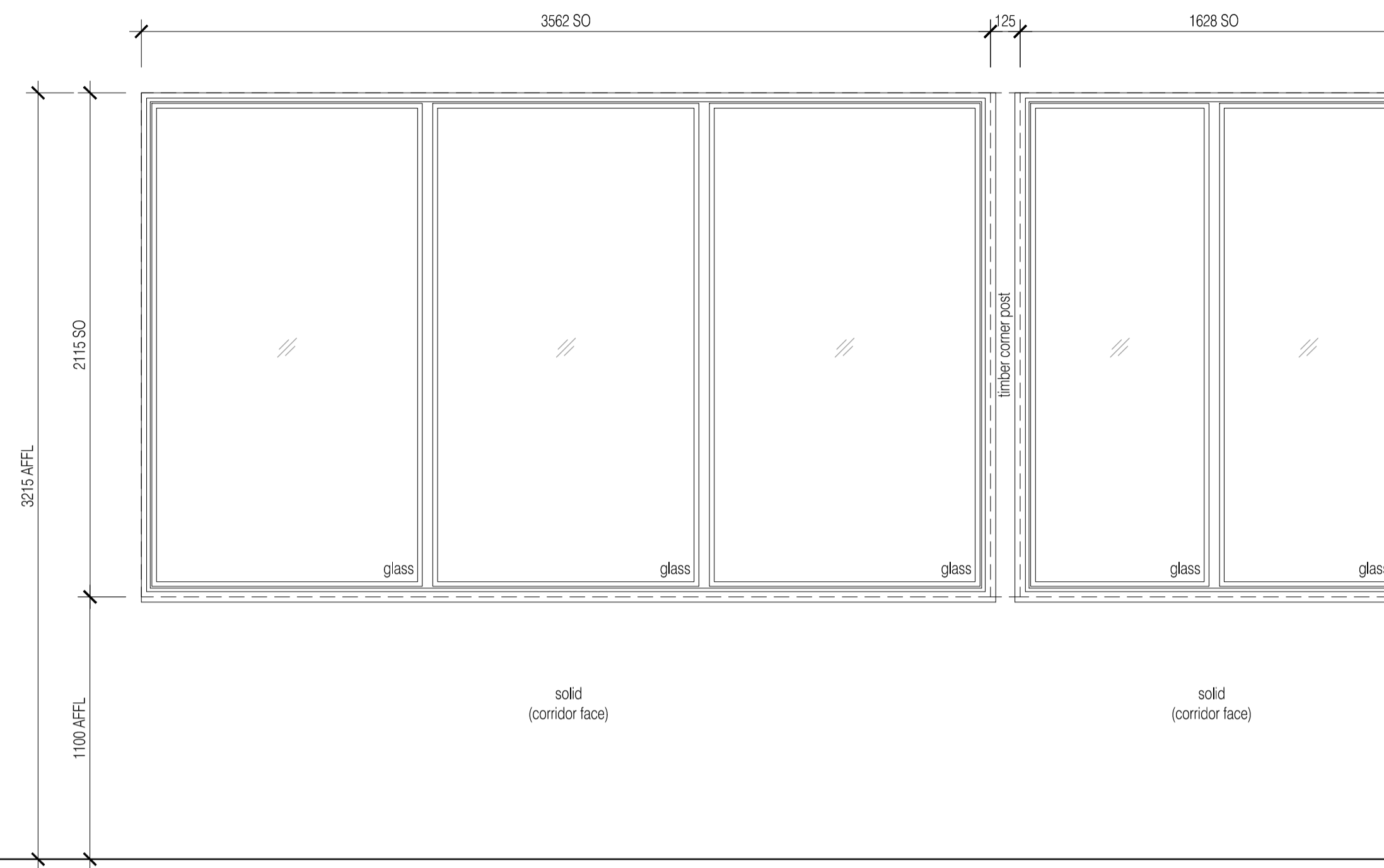
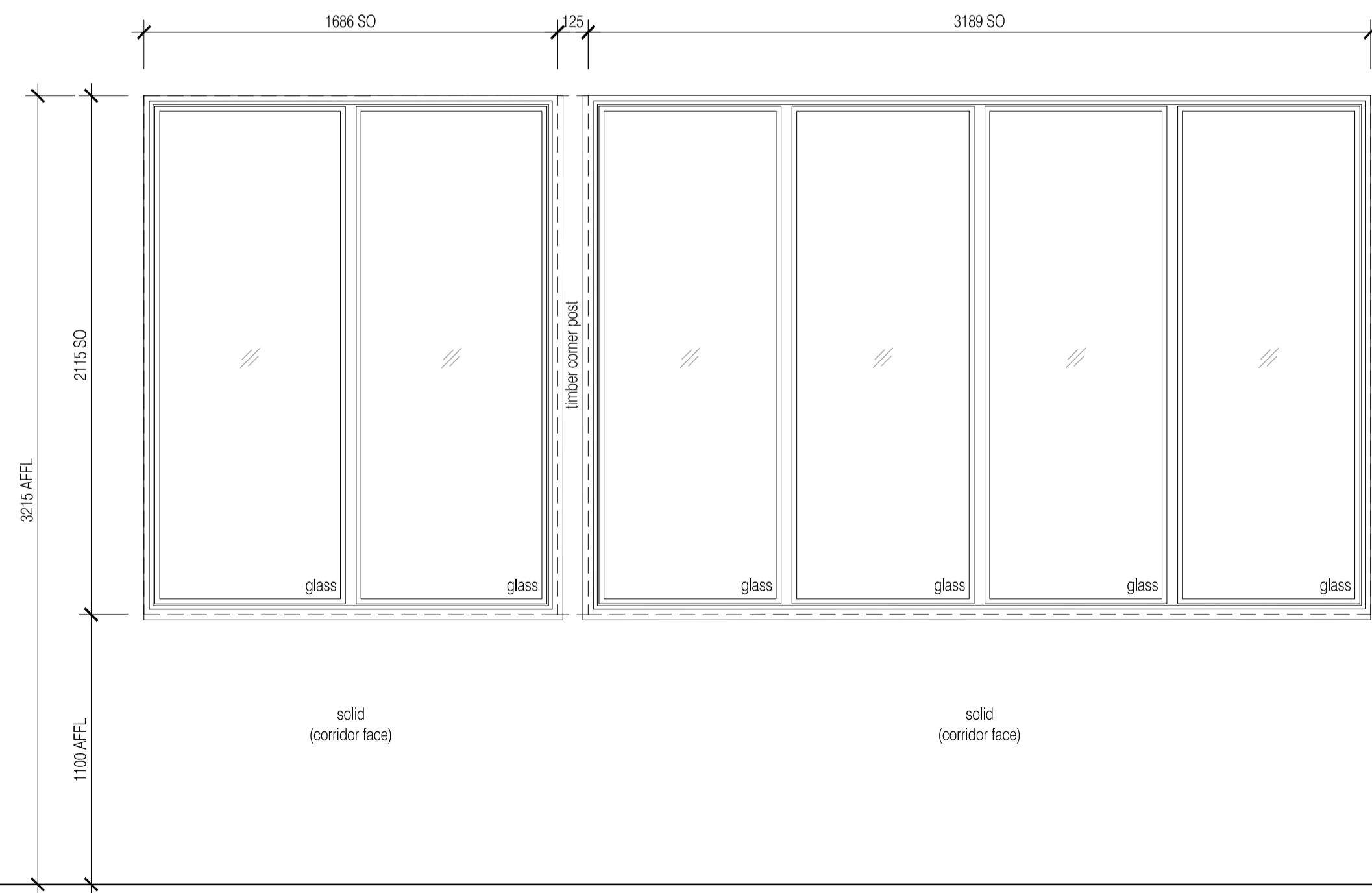


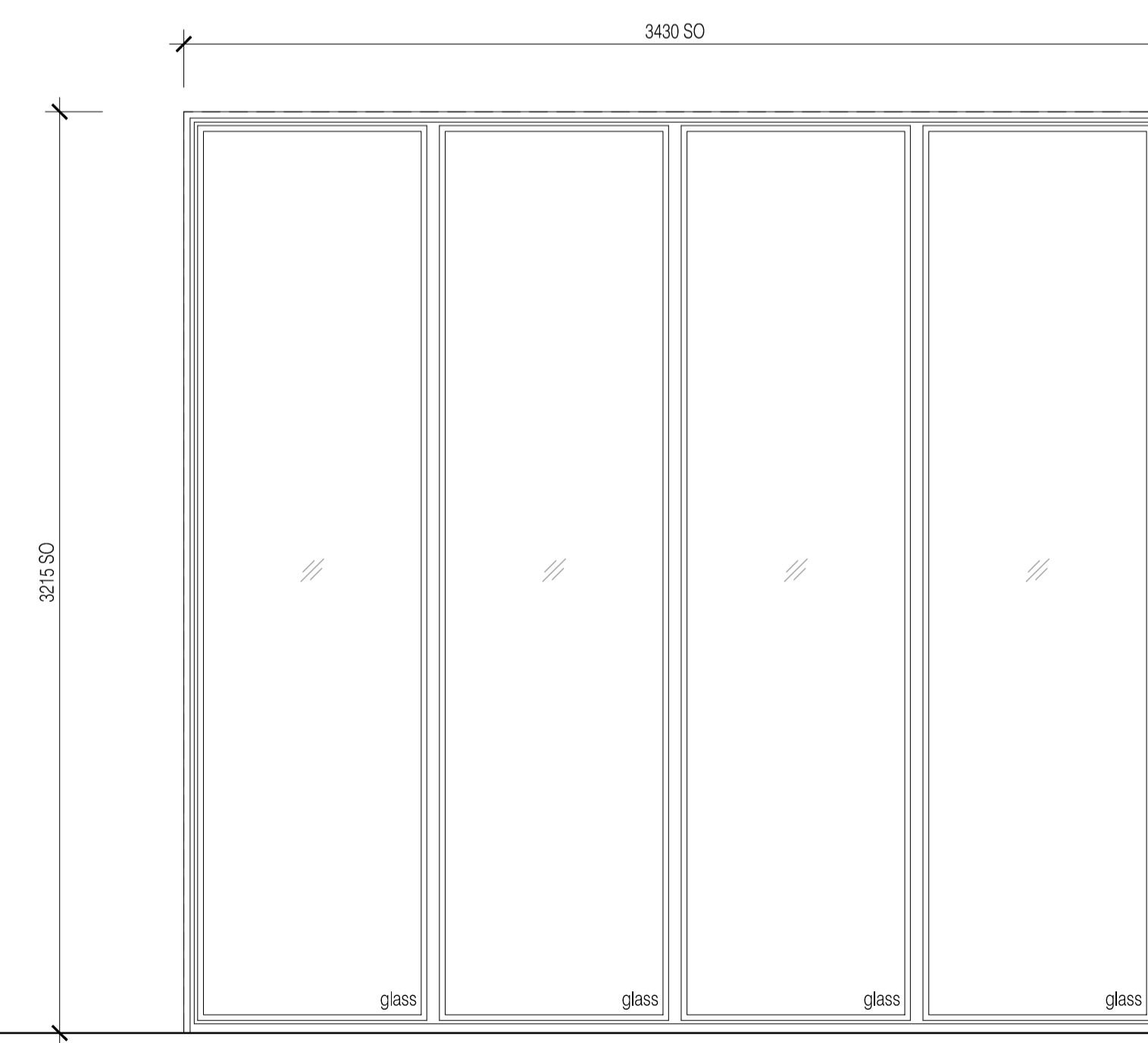
Assembly Elevation Type R



Assembly Elevation Type S+T



Assembly Elevation Type U+V



Assembly Elevation Type W

NOTES: Do not scale this drawing. All dimensions to be checked on site prior to commencement or manufacture.

For detailed requirements, including exact air transfer grilles areas (sized in accordance with Imtech Aqua M+E Engineers requirements), refer to FCG Door Schedule, ref: 222586-AZ-614.

For fire requirements refer also to FCG Fire Strategy Layout drawings 222586-AZ-160+161.

For acoustic requirements refer also FCG Acoustic Strategy Layout drawings 222586-AZ-165+166.

For ironmongery/hardware requirements, refer to separate 'Allgoods' specialist schedule.

For door and frame finishes requirements, refer to Door Schedule as noted above.

Refer also to NBS work-sections L20 + L40 generally.

NB. Door + screen supplier to confirm all final dimensions and specifications to the Architect, and all structural opening widths to be verified on site by the Contractor, prior to manufacture or ordering.

ISSUED FOR CONSTRUCTION

Rev	Date	By	Clk	Comment
02	11.10.10	RKC	CJ	Apollo Issue - Final Coordination by Apollo
01	03.09.10	JAS	AC	Revised generally as design development

BRINGING IDEAS TO LIFE



FRANKHAM

Frankham Consultancy Group Limited
 21 Pymms Road
 Haywards Heath RH16 3TP
 t 01444 444900 f 01444 455642
 enquiry@frankham.com
 www.frankham.com

Client



APOLLO EDUCATION

Project Title

Woodside
 Inclusive Learning Campus

Drawing Title

Block Z
 Door Schedule
 Sheet 3

Drawn by: RKC	Scale: 1:20@A1	Date: 05.07.10
Designed by: FCG	Checked by: AC	Approved by: AC

File Ref.: 01000022586-AZ-614-02-FCG-DOOR SCHEDULES 14.04.23.15.19.18

Drawing No. 222586-AZ-613	Rev. 02
------------------------------	------------