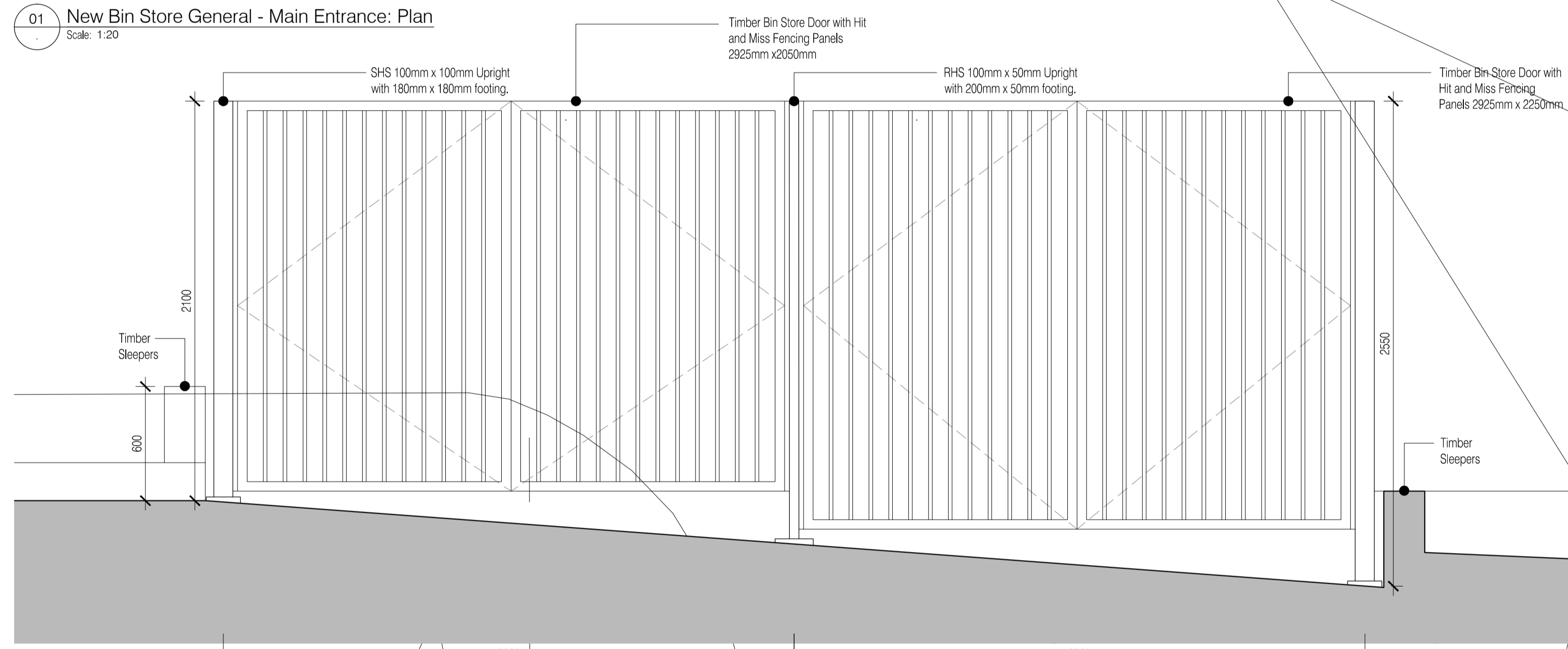
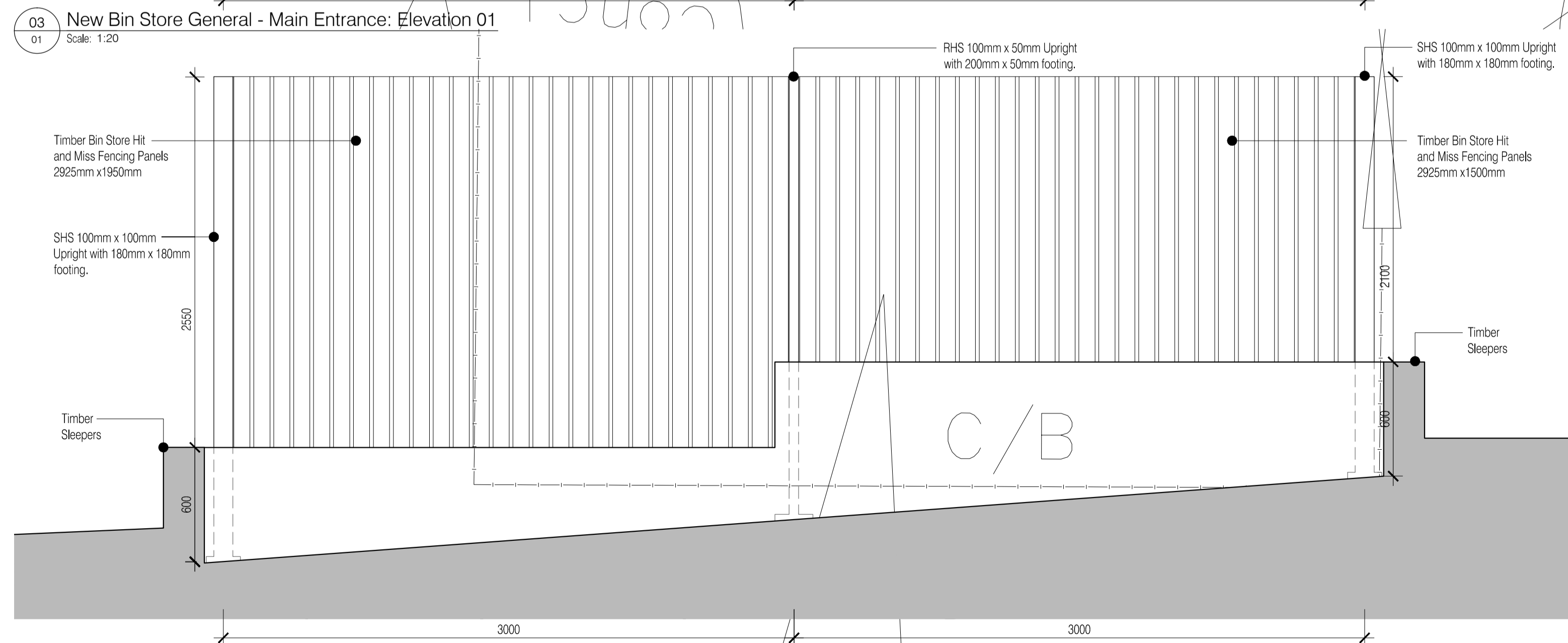


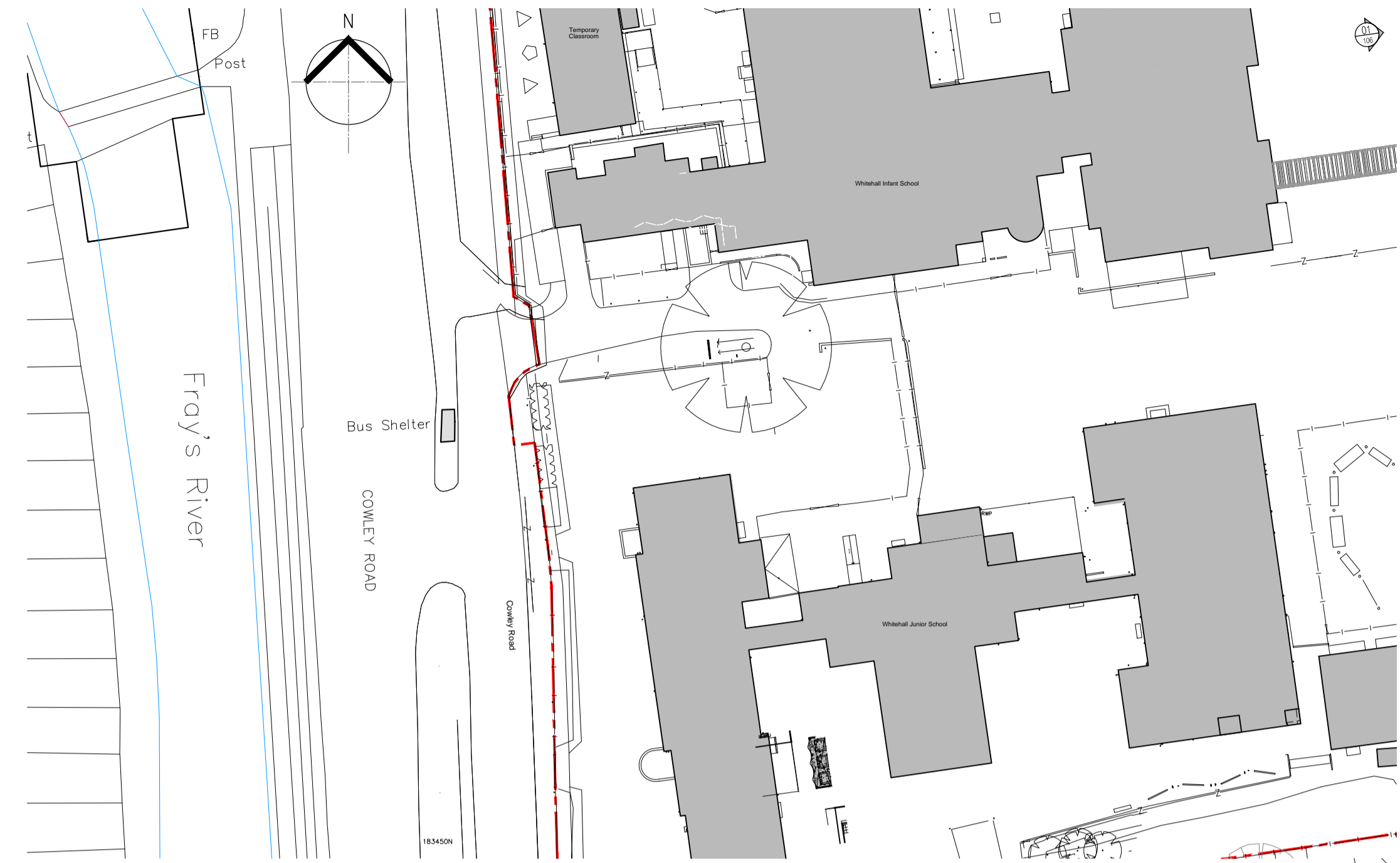
01 New Bin Store General - Main Entrance: Plan  
Scale: 1:20



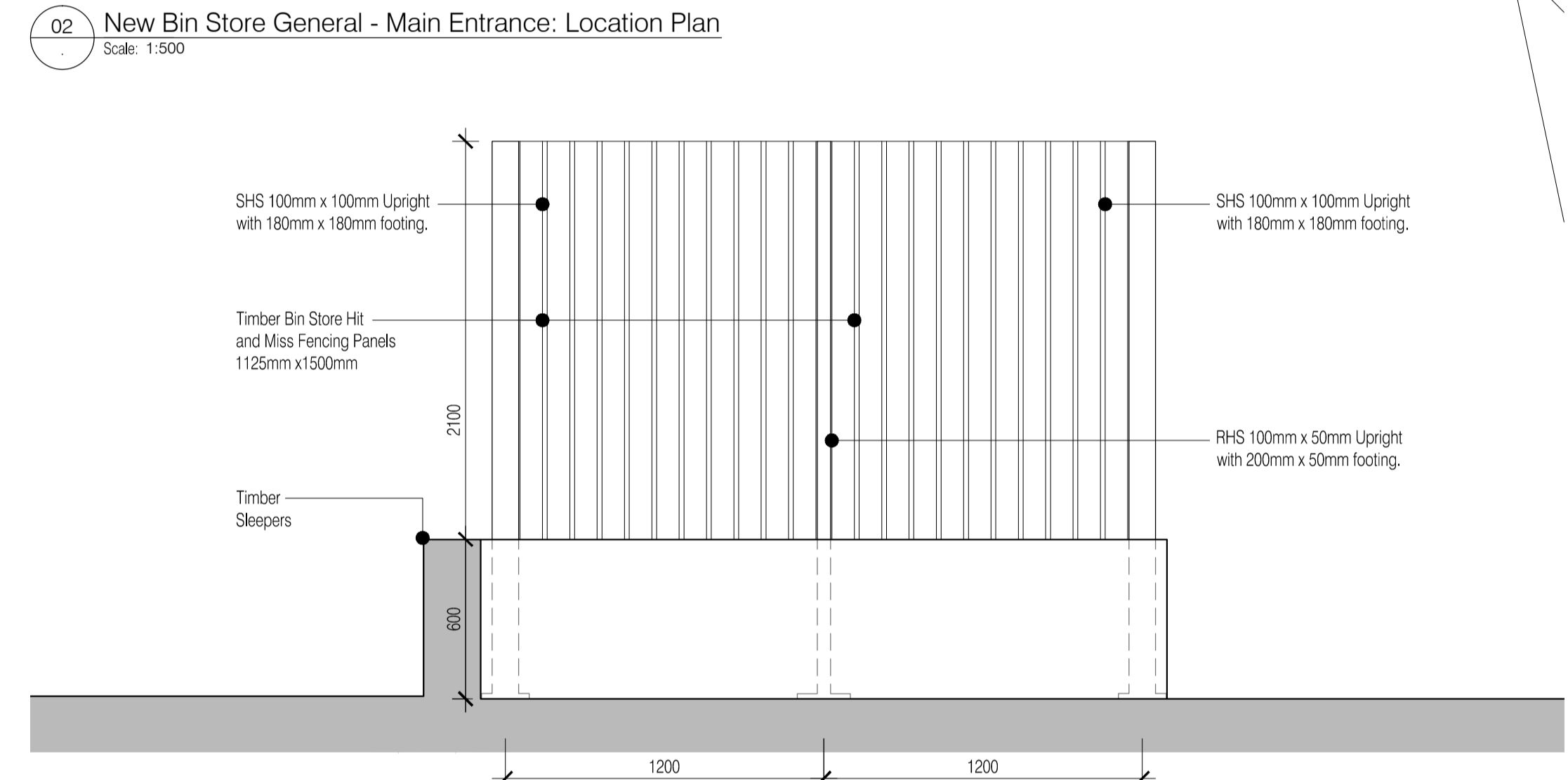
03 New Bin Store General - Main Entrance: Elevation 01  
Scale: 1:20



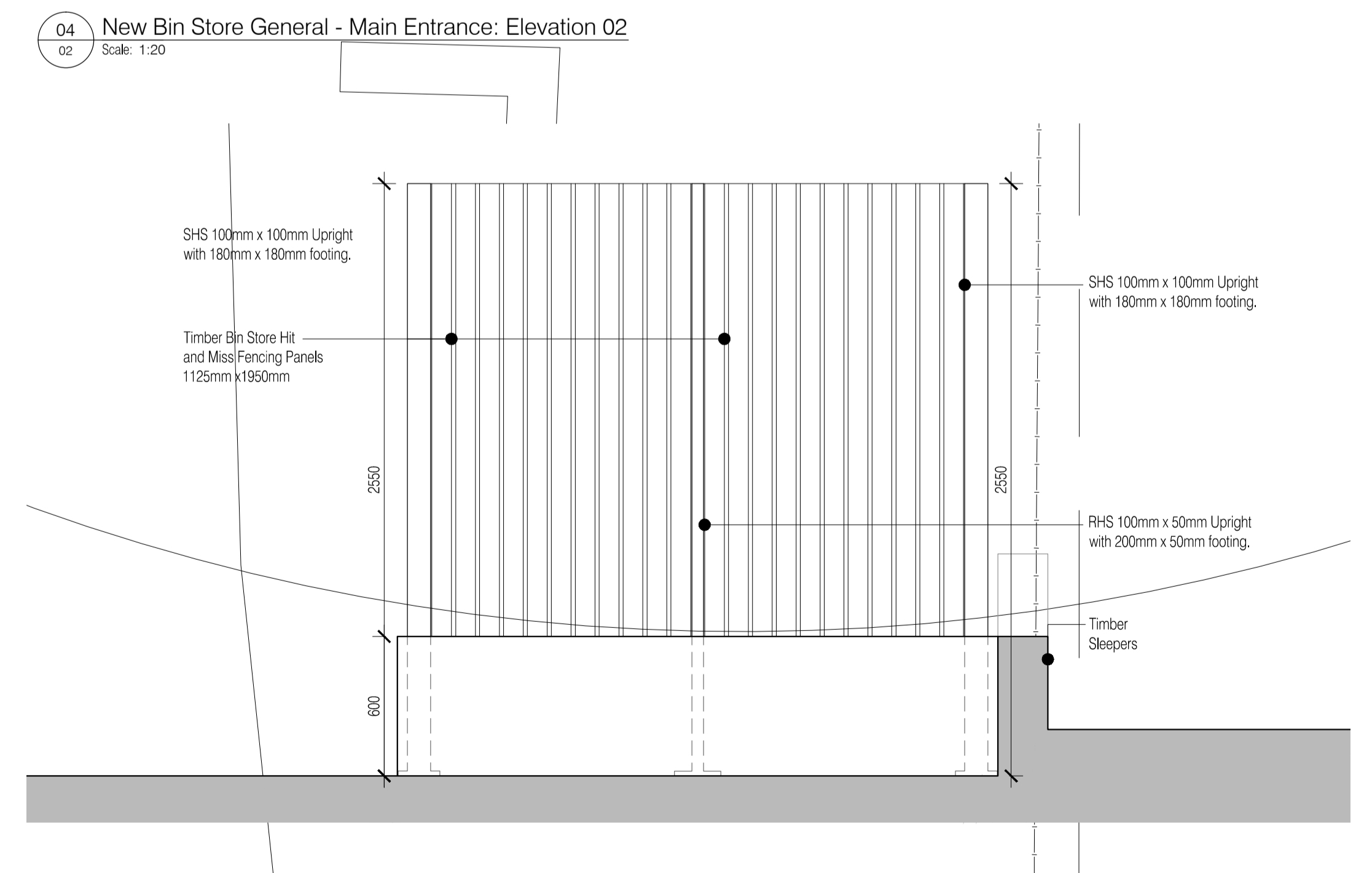
05 New Bin Store General - Main Entrance: Elevation 03  
Scale: 1:20



02 New Bin Store General - Main Entrance: Location Plan  
Scale: 1:500



04 New Bin Store General - Main Entrance: Elevation 02  
Scale: 1:20



06 New Bin Store - General Main Entrance: Elevation 04  
Scale: 1:20

NOTES: Do not scale this drawing. All dimensions to be checked on site prior to commencement or manufacture.  
NB: All information based on supplied third party survey information. All discrepancies to be reported to FCG immediately upon discovery.

**SUPERCEDED FROM C.I. SET**

Rev	Date	By	Clk	Comment
SS	21.05.13	DOD	JAS	Superceded from C.I. Set
C1	01.03.13	ES	JAS	Issued for Construction
A3	09.10.12	CH	JAS	Issued for Stage F approval
A2	23.08.12	SC	JAS	Drainage Channel & Bib Tap Added - Stage E
A1	27.07.12	RKC	JAS	Issued for Planning Approval

25 YEARS OF BRINGING IDEAS TO LIFE

**FRANKHAM**

Frankham Consultancy Group Limited  
Frankham House Wootton Business Park  
Besselsleigh Road Wootton Abingdon  
Oxfordshire OX13 6FD  
T 01865 322500 F 01865 327393  
E enquire@frankham.com www.frankham.com

Client: **Leadbitter CONSTRUCTION**

Project Title: Whitehall Junior & Infant School  
Refurbishment, Extension and New Build  
Cowley Road  
London Borough of Hillingdon

Drawing Title: New Bin Store General  
Main Entrance  
Location Plan,  
Plan & Elevations

Drawn by: RKC	Scale: Varies@A1	Date: 27.07.2012
Designed by: FCG	Checked by: JAS	Approved by: AC

File Ref: J:\000001\BIN - HILLINGDON\00-COLE - WHITEHALL REDEVELOPMENT\00-BLOCK AND SITE PLANS 1_011804\042010 - REV 05-H001003X	Rev. SS
--	------------

Drawing No. **611869-A-014**