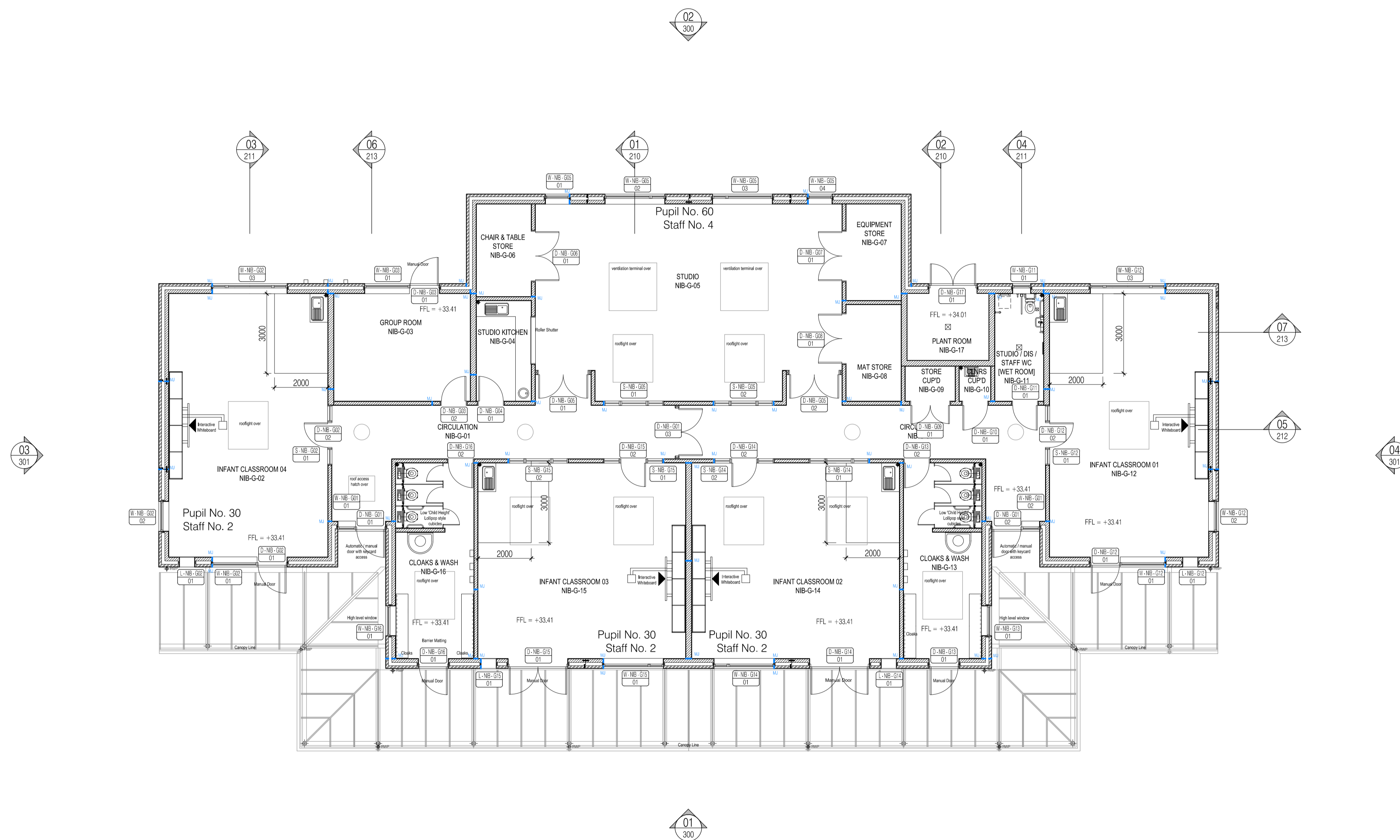


NOTES: Do not scale this drawing. All dimensions to be checked on site prior to commencement or manufacture.



01 Ground Floor Plan
Scale: 1:100

ISSUED FOR CONSTRUCTION

Rev	Date	By	Chk	Comment
C6	03.07.13	DOD	JM	Amendments to Disabled WC
C5	04.06.13	DOD	JAS	New door tag added
C4	21.05.13	DOD	JAS	Fire Safety Updates
C3	10.04.13	DOD	JAS	Sink numbers reduced to classrooms
C2	18.03.13	ES	JAS	MJs moved as per Thomason's comments
C1	18.02.13	ES	JAS	General updates as per Setting Out drawing



FRANKHAM

Frankham Consultancy Group Limited

Frankham House Woolton Business Park
Besselsleigh Road Woolton Abingdon
Oxfordshire OX13 6FD
T 01865 322500 F 01865 327393
E enquiries@frankham.com
www.frankham.com

25 YEARS OF BRINGING IDEAS TO LIFE
ANNIVERSARY
1982-2007



Client
Leadbitter
CONSTRUCTION

Project Title
Whitehall Junior & Infant School
Refurbishment, Extension and New Build
Cowley Road
London Borough of Hillingdon

Drawing Title
New 4 Classroom Infants Block
General Arrangement Plan

Drawn by: RKC	Scale: 1:100@A1	Date: 02.04.12
Designed by: FCG	Checked by: JAS	Approved by: AGC

File Ref: \\FRANKHAM\PROJECTS\2012\04\WHITEHALL JUNIOR & INFANT SCHOOL\10_LOCATION PLAN AND G.A. (1).DWG - REV 04 - 02.04.12
Drawing No. 611869-A-122 Rev. C6