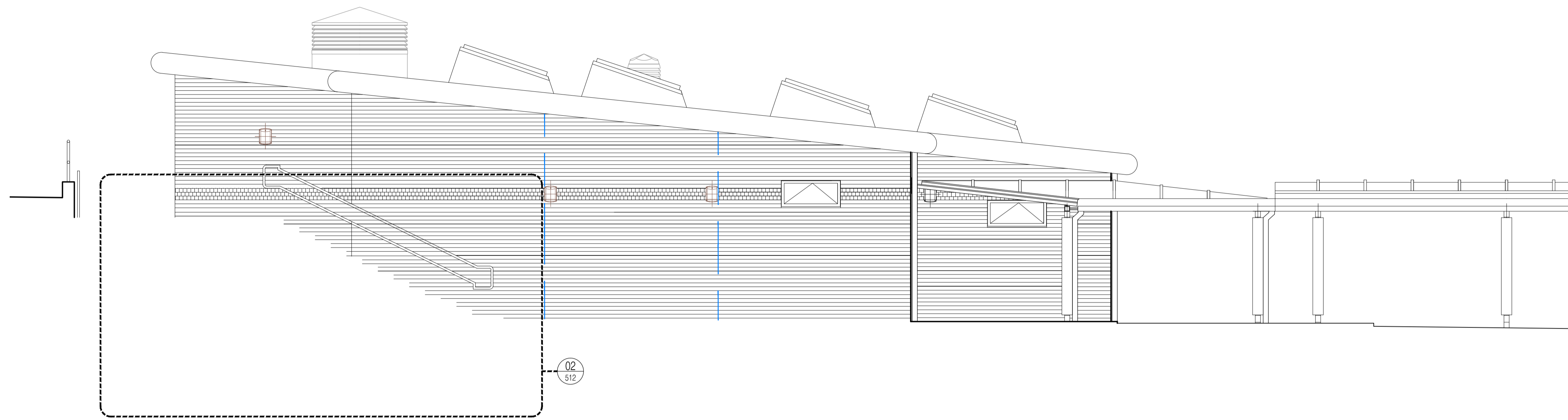


NOTES: Do not scale this drawing. All dimensions to be checked on site prior to commencement or manufacture.



10 Section 8 - Looking South  
Scale: 1:50

REVISION ISSUE DATE REQUIRED  
BY NOT ISSUED

ISSUED FOR CONSTRUCTION

Rev	Date	By	Clk	Comment
C1	28.02.13	ES	JAS	First Issue

25 YEARS OF BRINGING IDEAS TO LIFE

  
**FRANKHAM**  
**Frankham Consultancy Group Limited**  
 Frankham House Woolton Business Park  
 Besselsleigh Road Woolton Abingdon  
 Oxfordshire OX13 6FD  
 T 01865 322500 F 01865 327393  
 E enquiries@frankham.com  
 www.frankham.com

Client

Leadbitter

CONSTRUCTION

Project Title  
Whitehall Junior & Infant School  
Refurbishment, Extension and New Build  
Cowley Road  
London Borough of Hillingdon

Drawing Title  
New Infant Block  
Proposed Sections  
Sheet 5 of 5

Drawn by: RKC	Scale: 1:50@A1	Date: 20.02.13
Designed by: FCG	Checked by: JAS	Approved by: AC

File Ref: \\XXXXXXXXXX\XXXXXXXXXX\PROJECTS\XXXXXXXXXX\REVISED\XXXXXXXXXX

Drawing No. <b>611869-A-214</b>	Rev. <b>C1</b>
------------------------------------	-------------------