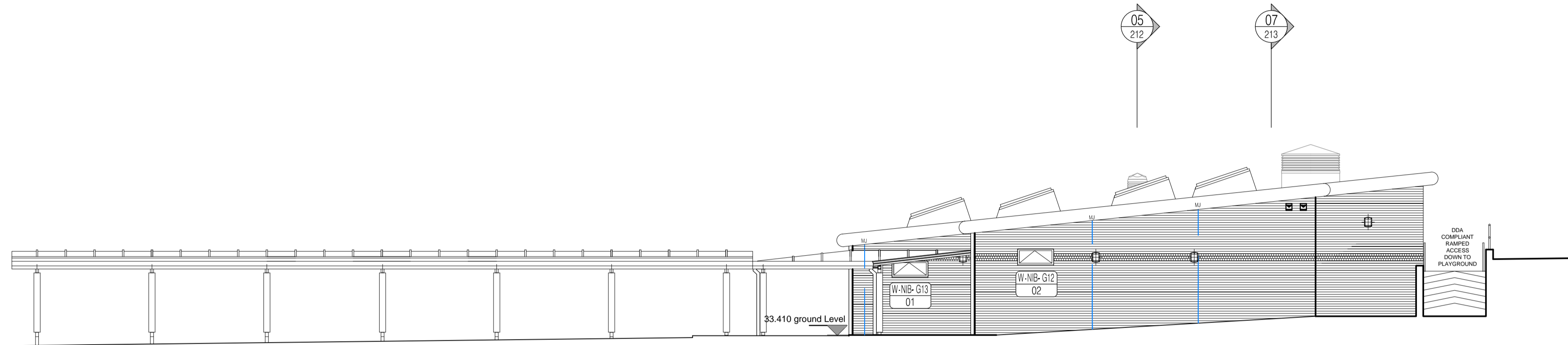


NOTES: Do not scale this drawing. All dimensions to be checked on site prior to commencement or manufacture.

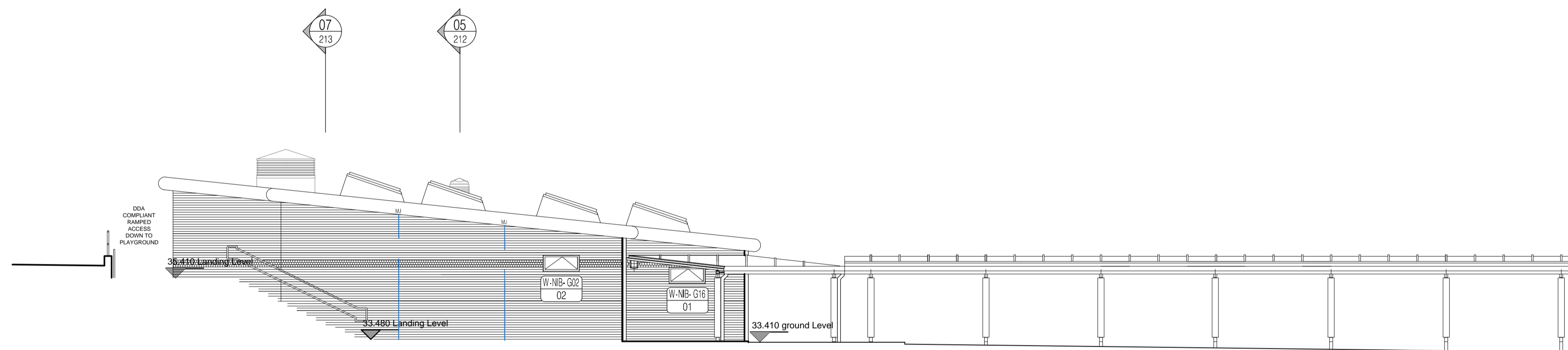
Bat Boxes:  
 • M&E Subcontractor to review position of lighting to allow 4m distance from Bat Boxes.

Bird Boxes:  
 • Hole size to be confirmed by School - dependant on bird species to be attracted.

FOR SETTING OUT OF BIRD AND BAT BOXES, REFER TO DRAWING NUMBER 611869-A-131 and 132



03 South Facing Elevation  
 Scale: 1:100



04 North Facing Elevation  
 Scale: 1:100

ISSUED FOR CONSTRUCTION

Rev	Date	By	CHK	Comment
C2	04.06.13	DOD	JAS	Roof and glazing updates and sub-con coord.
C1	28.02.13	ES	JAS	General updates - Issued for Construction
A6	09.10.12	SC	JAS	Fascias amended. Issued for Stage F.
A5	01.08.12	SC	JAS	Rooflights amended
A4	17.07.12	SC	JAS	Amended in line with Window Schedule Issue
A2	05.07.12	SC	JAS	Coordinated with new sections. Stage E Issue
A1	01.06.12	HC	JAS	Re-numbered. Issued for Stage D Approval

25 YEARS OF BRINGING IDEAS TO LIFE

ANNIVERSARY 25 YEARS 1982-2007

**FRANKHAM**

Frankham Consultancy Group Limited  
 Frankham House Woolton Business Park  
 Besselsleigh Road Woolton Abingdon  
 Oxfordshire OX13 6FD  
 T 01865 322500 F 01865 327393  
 E enquiry@frankham.com www.frankham.com

Client  
**Leadbitter**  
 CONSTRUCTION

Project Title  
 Whitehall Junior & Infant School  
 Refurbishment, Extension and New Build  
 Cowley Road  
 London Borough of Hillingdon

Drawing Title  
 New 4 Classroom Infant Block  
 Proposed Elevations  
 (Sheet 2 of 2)

Drawn by: RKC	Scale: 1:100@A1	Date: 05.04.12
Designed by: FCG	Checked by: JAS	Approved by: AGC

File Ref: J:\00004188 - HILLINGDON SCHOOLS - WHITEHALL JUNIOR & INFANT SCHOOL - ELEVATIONS - (1:100@A1) DWG - REV C - 05/04/12 14:04:24:10:42:54

Drawing No. 611869-A-301	Rev. C2
-----------------------------	------------