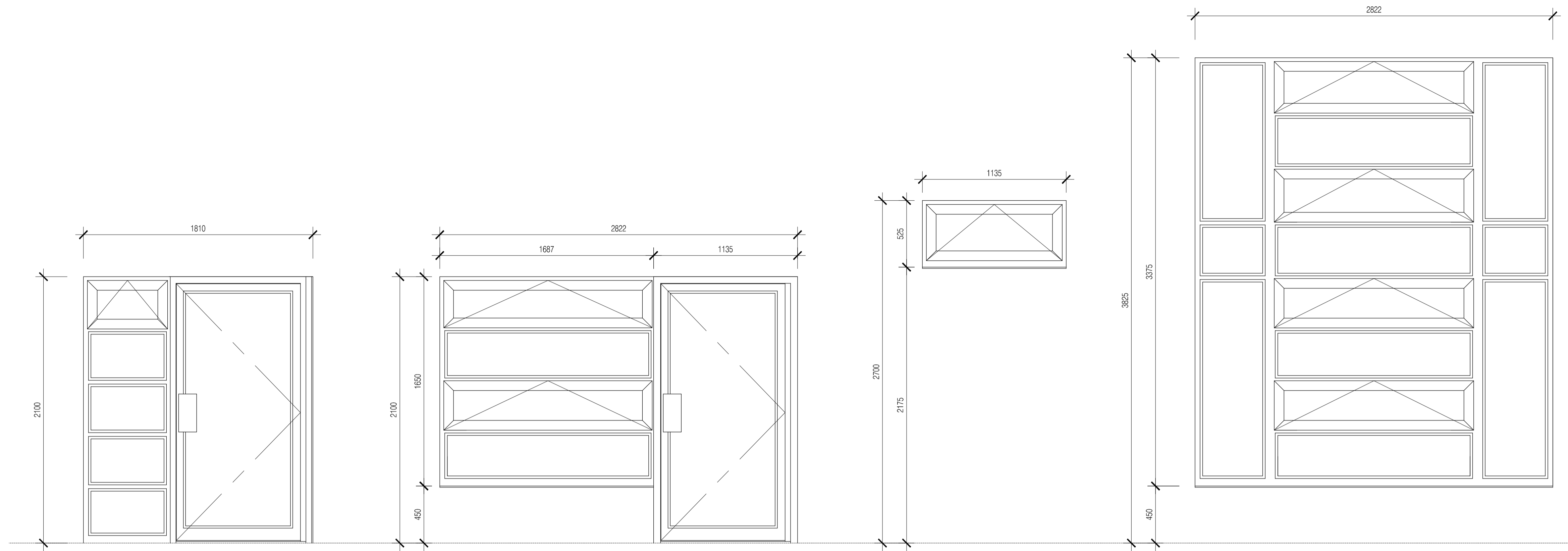


NOTES: Do not scale this drawing. All dimensions to be checked on site prior to commencement or manufacture.
 NB: All information based on supplied third party survey information. All discrepancies to be reported to FCG immediately upon discovery.

- Notes
- Refer also to the following window schedule:
- 611869-A-620 - New Infants Block
- Refer to NBS specification sections L10 + L40.
- Refer also to detail drawings 611869-A-500 Series
- AOV to certain openings to M&E Specification

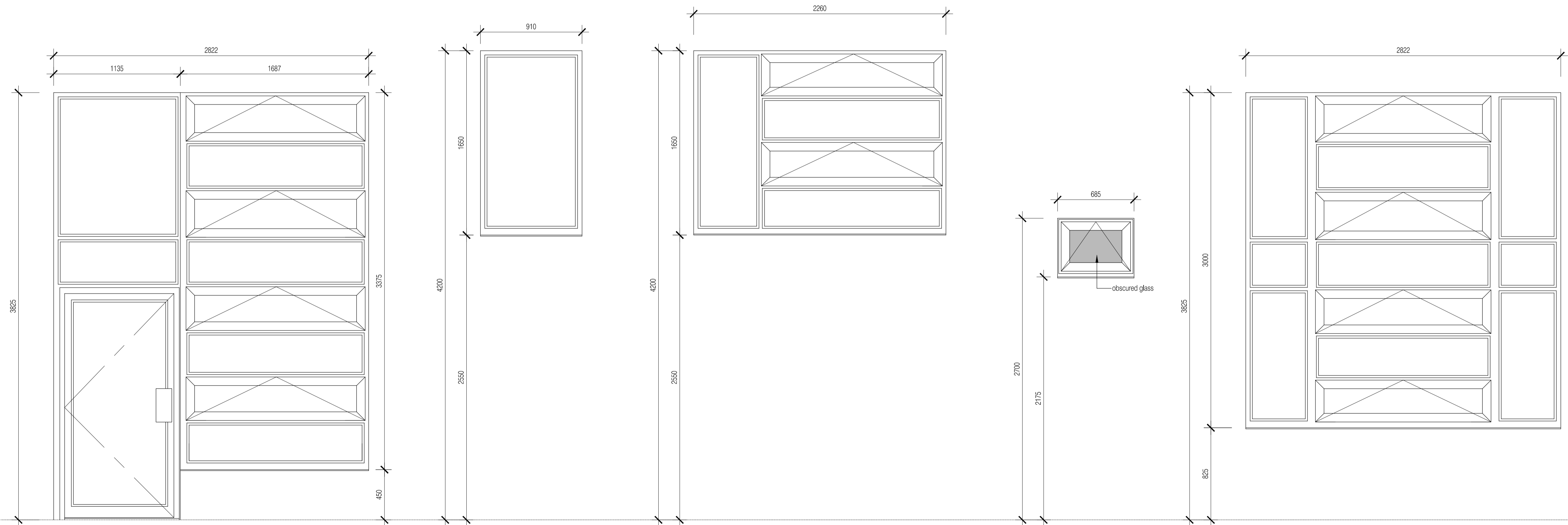


Assembly Elevation Type 01

Assembly Elevation Type 02

Assembly Elevation Type 03

Assembly Elevation Type 04



Assembly Elevation Type 05

Assembly Elevation Type 06

Assembly Elevation Type 07

Assembly Elevation Type 08

Assembly Elevation Type 09

ISSUED FOR CONSTRUCTION

Rev	Date	By	Chk	Comment
C2	04.06.13	DOD	JAS	Sub-Contractor coordination and detail added
C1	07.03.13	ES	JAS	Issued for Construction
A3	09.10.12	SC	JAS	Issued for Stage F approval.
A2	01.08.12	SC	JAS	Door references added
A1	17.07.12	SC	JAS	First formal issue. Stage E Issue

25 YEARS OF BRINGING IDEAS TO LIFE

FRANKHAM

Frankham Consultancy Group Limited

Frankham House Wootton Business Park
 Besselsleigh Road Wootton Abingdon
 Oxfordshire OX13 6FD
 T 01865 322500 F 01865 327393
 E enquiry@frankham.com www.frankham.com

ANNIVERSARY 25 YEARS 1982-2007

Client: **Leadbitter CONSTRUCTION**

Project Title: Whitehall Junior & Infant School
 Refurbishment, Extension and New Build
 Cowley Road
 London Borough of Hillingdon

Drawing Title: New Infants Block
 Window & External Door Elevations
 Sheet 1 of 2

Drawn by: RKC	Scale: 1:20@A1	Date: 17.07.12
Designed by: FCG	Checked by: JAS	Approved by: AC

File Ref: J:\000001869-NEW INFANTS BLOCK - WHITEHALL JUNIOR & INFANT SCHOOL\0001869-A-390-1.dwg - REVISED 17.07.12

Drawing No. 611869-A-390	Rev. C2
-----------------------------	------------