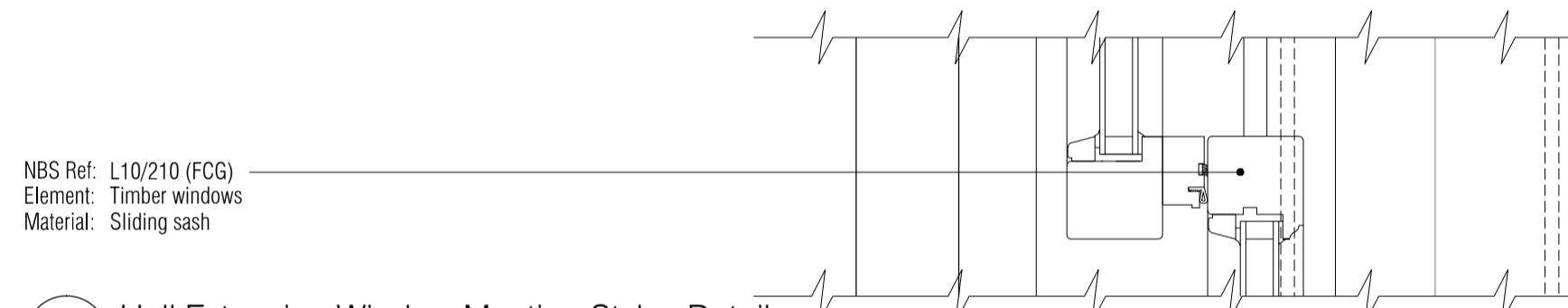
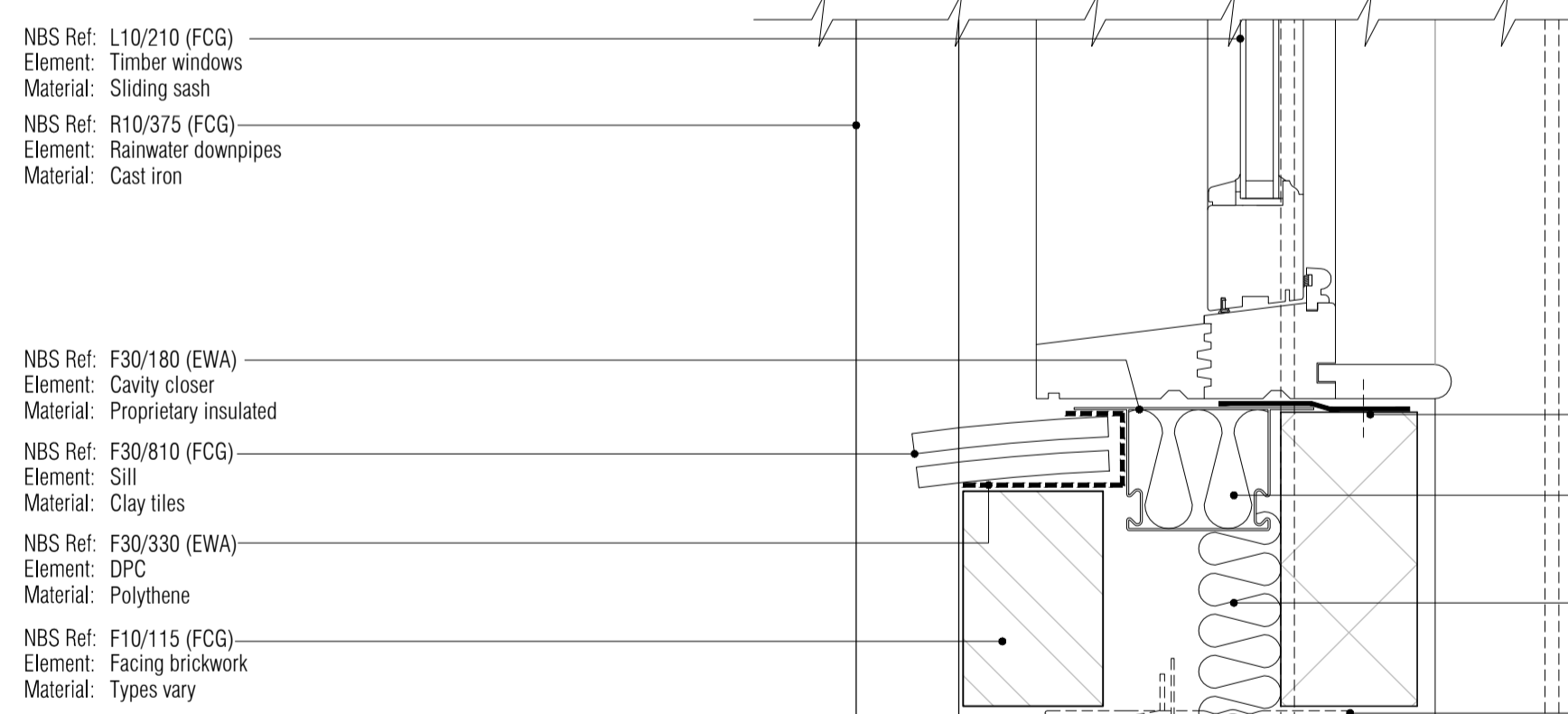


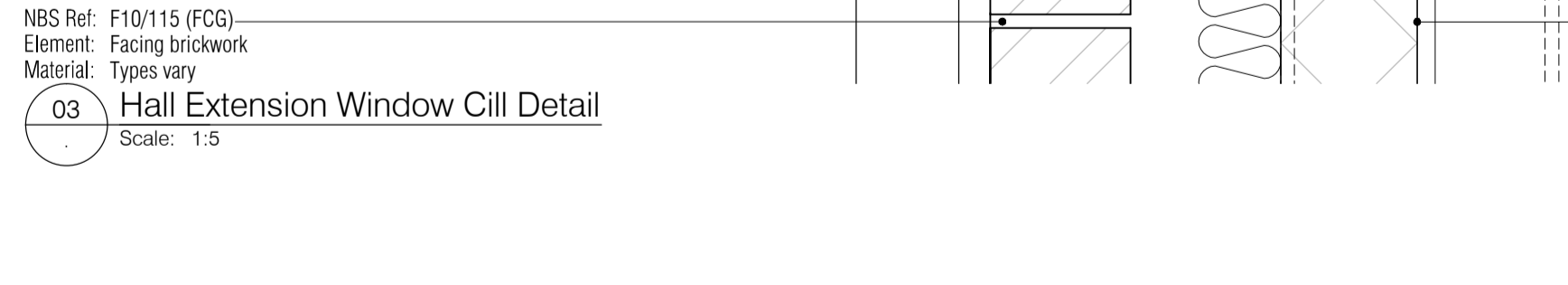
01 Hall Extension Window Head Detail
Scale: 1:5



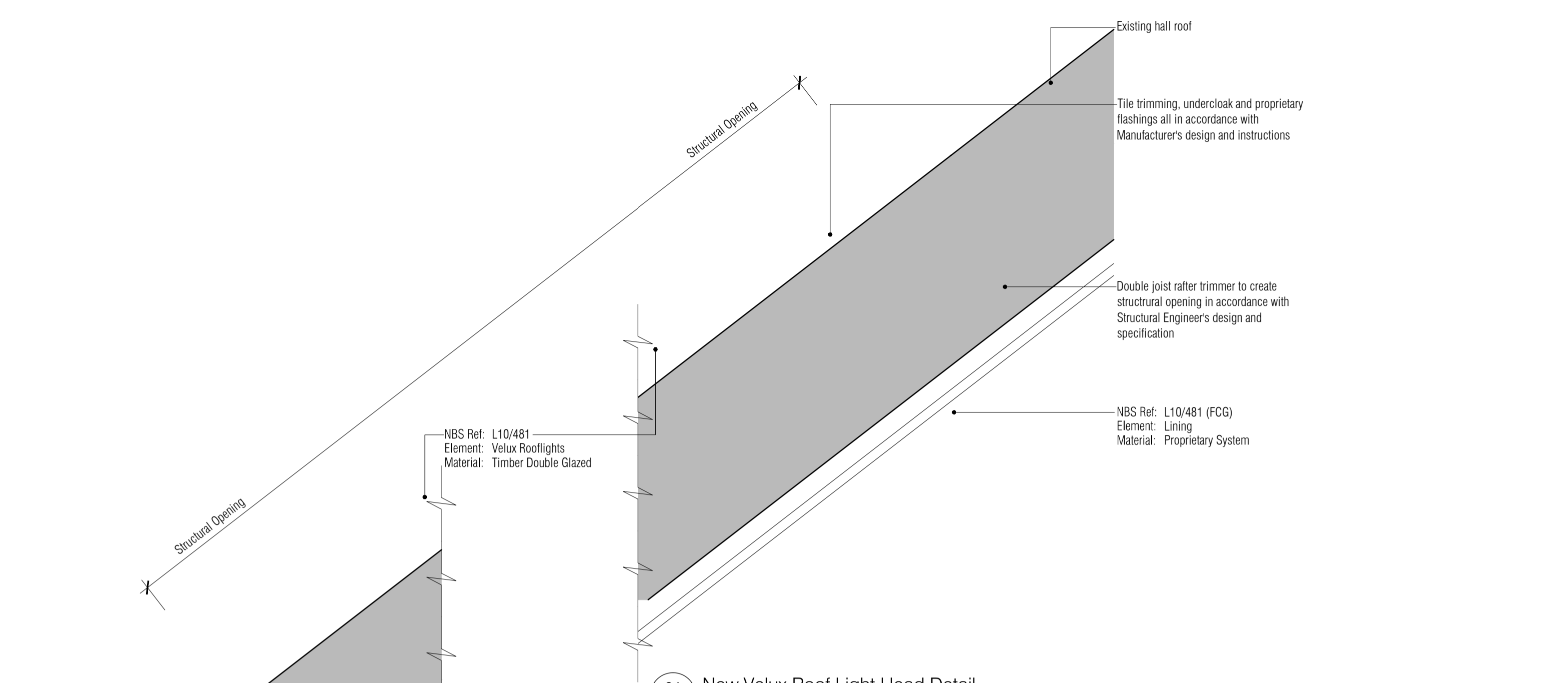
02 Hall Extension Window Meeting Styles Detail
Scale: 1:5



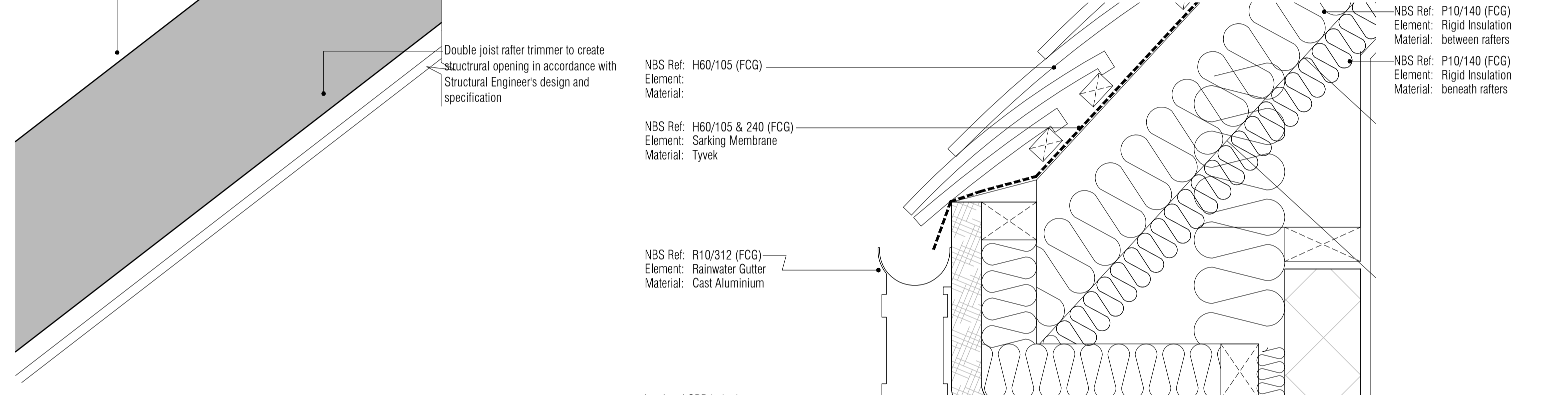
03 Hall Extension Window Cill Detail
Scale: 1:5



04 Kitchen Roof / Infill Eaves Detail
Scale: 1:5

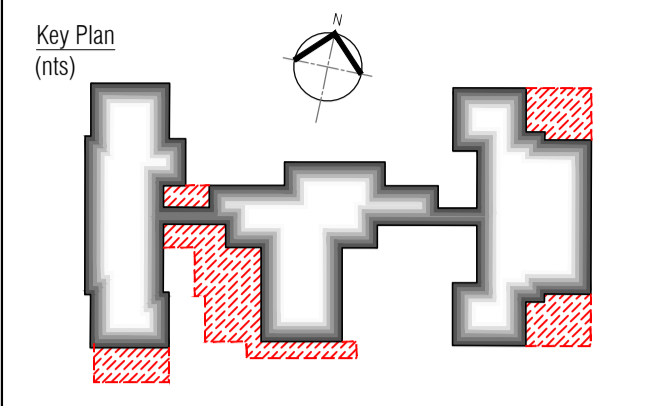


05 New Velux Roof Light Head Detail
Scale: 1:5



06 New Velux Roof Light Cill Detail
Scale: 1:5

NOTES: Do not scale this drawing. All dimensions to be checked on site prior to commencement or manufacture.



AS BUILT DRAWING

Rev	Date	By	Clk	Comment

AB1 17.04.14 RKC AGC DRAWING ISSUED - AS BUILT

25 YEARS OF BRINGING IDEAS TO LIFE

FRANKHAM

Frankham Consultancy Group Limited
 Frankham House Wootton Business Park
 Besselsleigh Road Wootton Abingdon
 Oxfordshire OX13 6FD
 T 01865 322500 F 01865 327393
 E enquire@frankham.com www.frankham.com

Client: **Leadbitter CONSTRUCTION**

Project Title: Whitehall Junior & Infant School
 Refurbishment, Extension and New Build
 Cowley Road
 London Borough of Hillingdon

Drawing Title: Typical Roof and Window Details

Drawn by: RKC	Scale: 1:5@A1	Date: 03.10.12
Designed by: FCG	Checked by: JAS	Approved by: AGC

File Ref: J:\000001\888-HELINGDON SCHOOL-INTERIOR REFURBISHMENT\03_DRAWINGS\AS BUILT\611869-A-501.DWG - REV 04 - 000010010 14.04.24.10.48.18

Drawing No. 611869-A-501 Rev. AB1