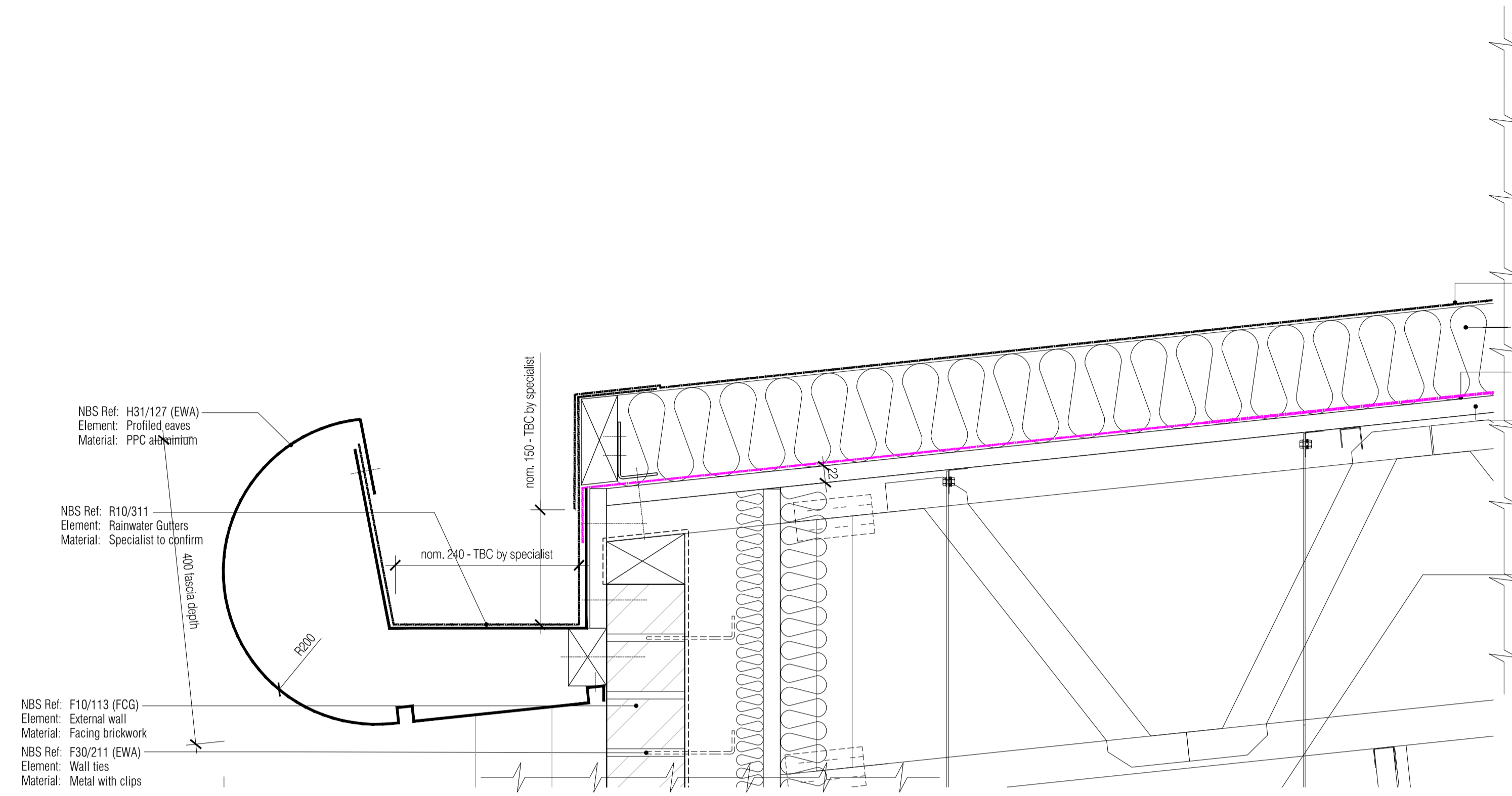
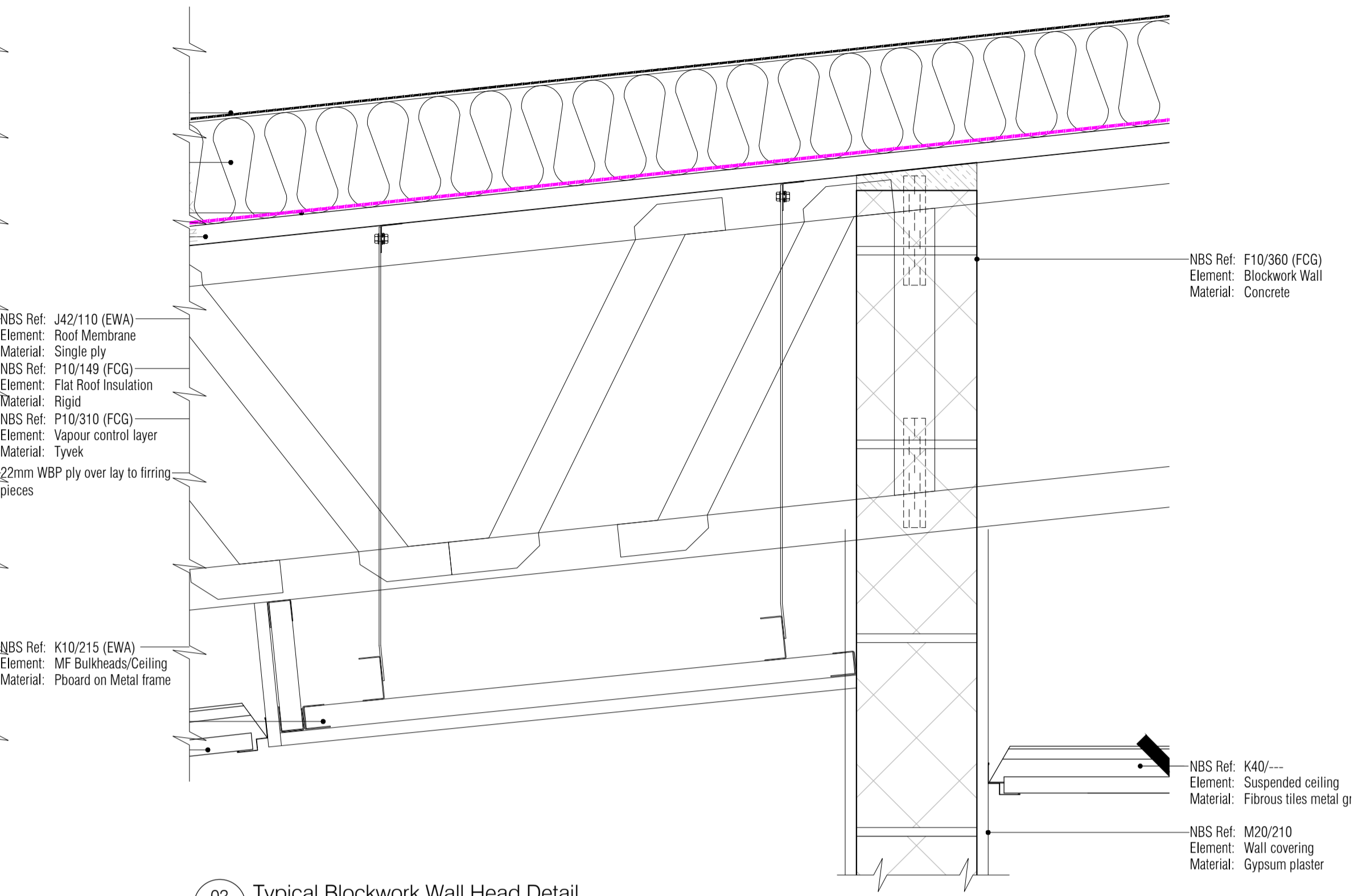


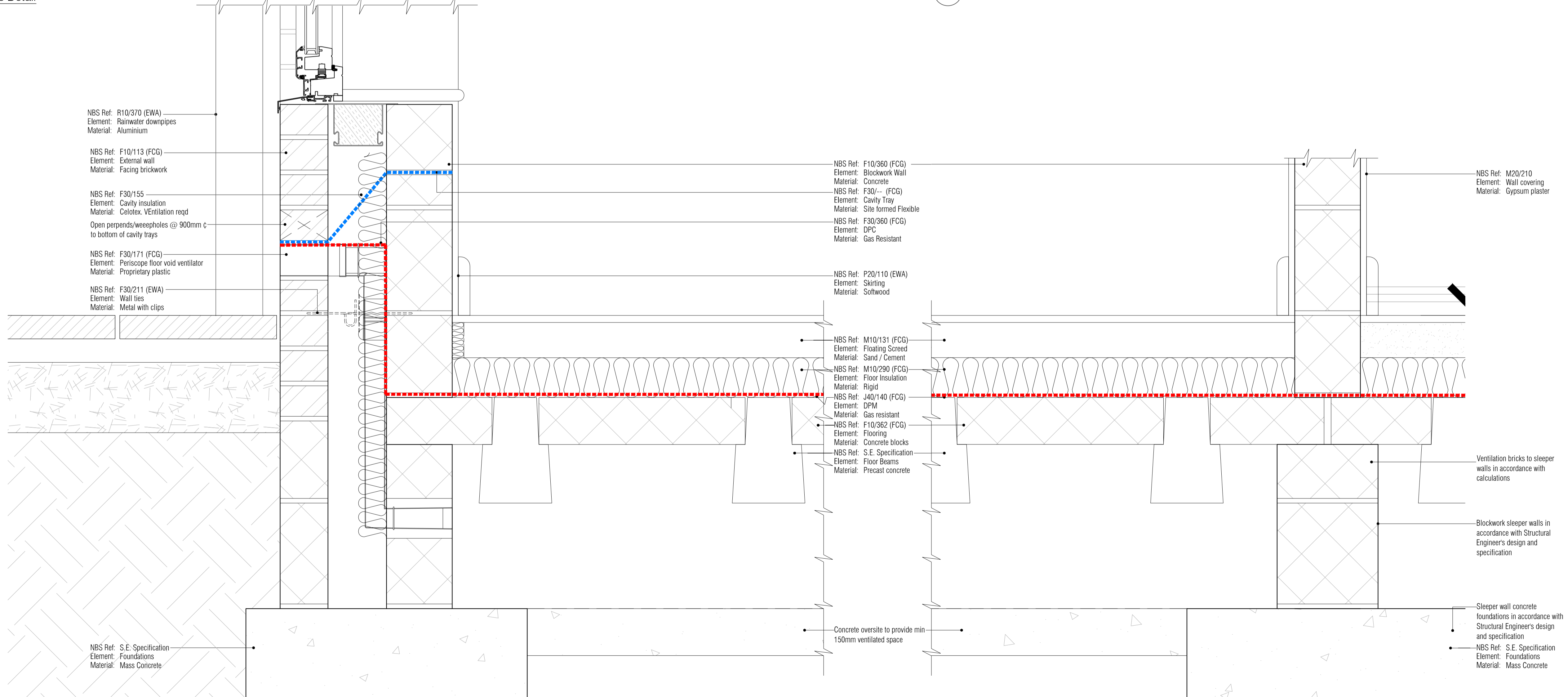
NOTES: Do not scale this drawing. All dimensions to be checked on site prior to commencement or manufacture.



01 Typical Eaves Detail  
Scale: 1:5



02 Typical Blockwork Wall Head Detail  
Scale: 1:5



03 Section 1  
Scale: 1:5

04 Typical Blockwork Wall Sole Detail  
Scale: 1:5

ISSUED FOR CONSTRUCTION

Rev	Date	By	Clk	Comment
C2	24.05.13	DOD	JAS	Client VE Amends and Gen. Details Added
C1	07.03.13	ES	JAS	Issued for Construction
A1	09.10.12	RKC	JAS	First Formal Issue, Stage F Issue

25 YEARS OF BRINGING IDEAS TO LIFE

**FRANKHAM**

**Frankham Consultancy Group Limited**

Frankham House Woolton Business Park  
Besselsleigh Road Woolton Abingdon  
Oxfordshire OX13 6FD  
T 01865 322500 F 01865 327393  
E enquire@frankham.com  
www.frankham.com

Client: **Leadbitter CONSTRUCTION**

Project Title: Whitehall Junior & Infant School  
Refurbishment, Extension and New Build  
Cowley Road  
London Borough of Hillingdon

Drawing Title: New Infant Block  
Typical Details  
Sheet 1

Drawn by: RKC	Scale: 1:20@A1	Date: 03.10.12
Designed by: FCG	Checked by: JAS	Approved by: AC

File Ref: \X:\0004\186-186\2012\10-COLS-WHITEHALL-JUNIOR&INFANT-SCHOOL-DETAILS-BUILDING-11-11-10\0401.DWG - REV-C-186186186 14.04.24.10.49.36

Drawing No. 611869-A-507 Rev. C2