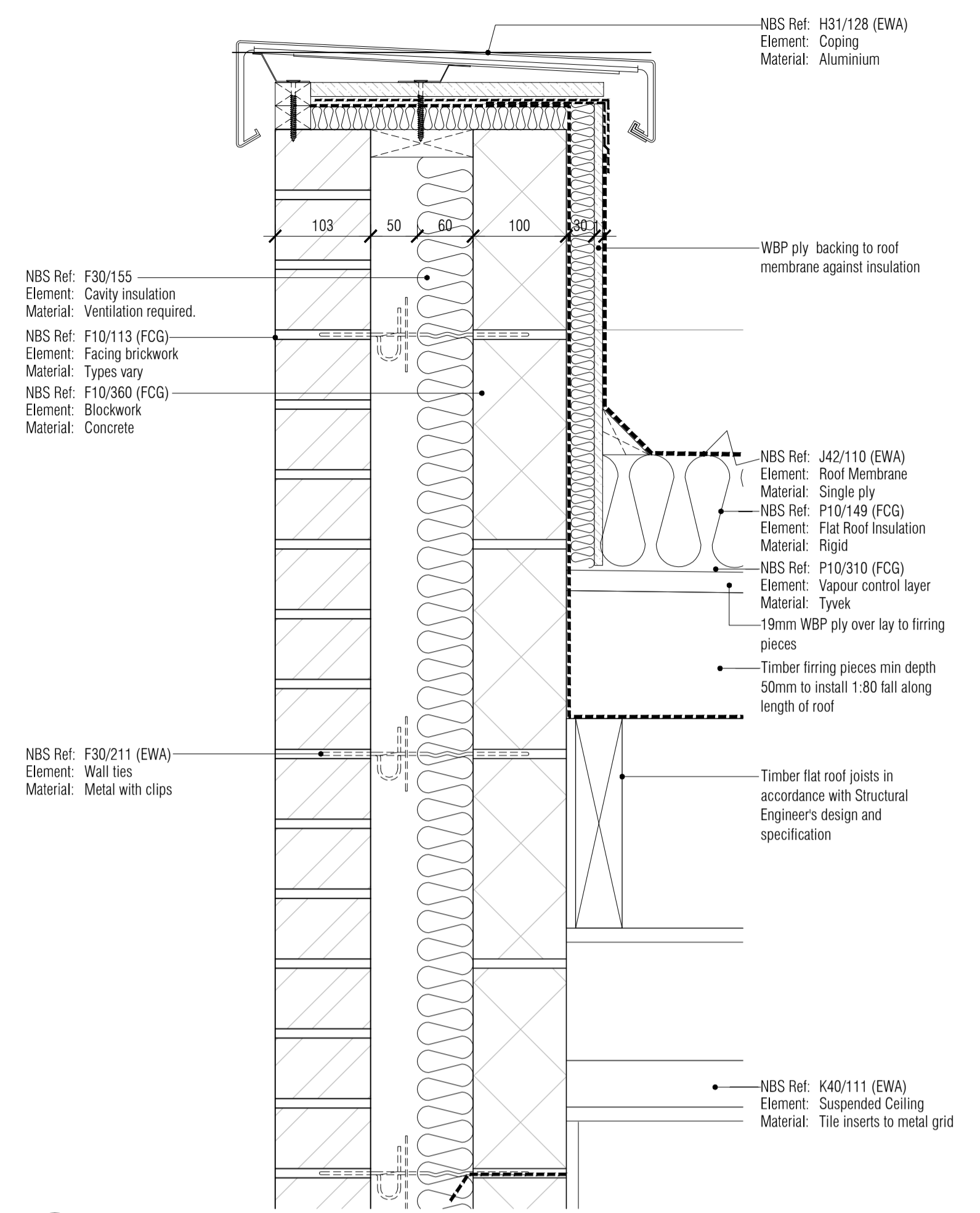
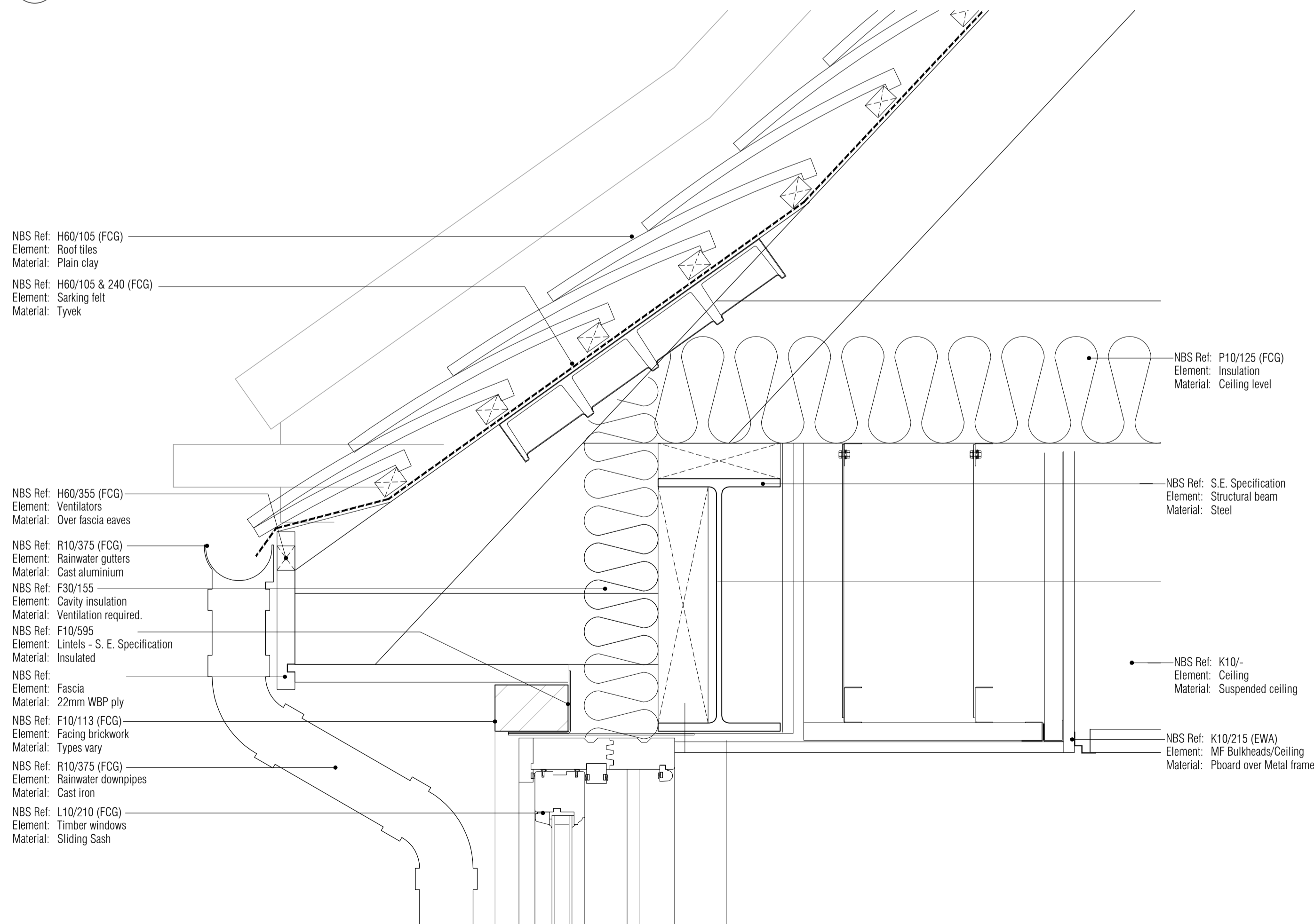


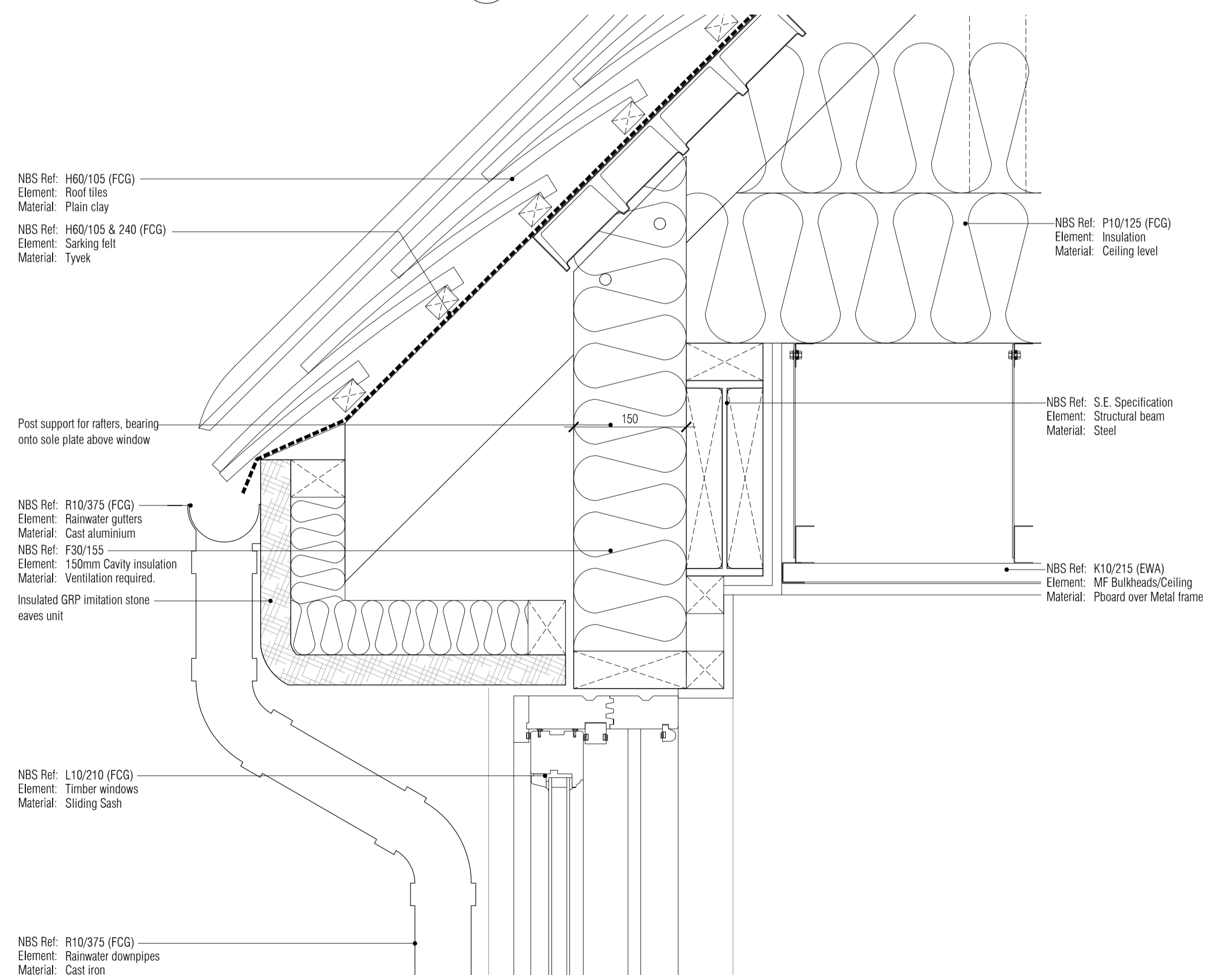
01 Curved Wood Roll Jointed Lead Sheet Eaves Detail  
Scale: 1:5



04 Typical Parapet Eaves Detail  
Scale: 1:5

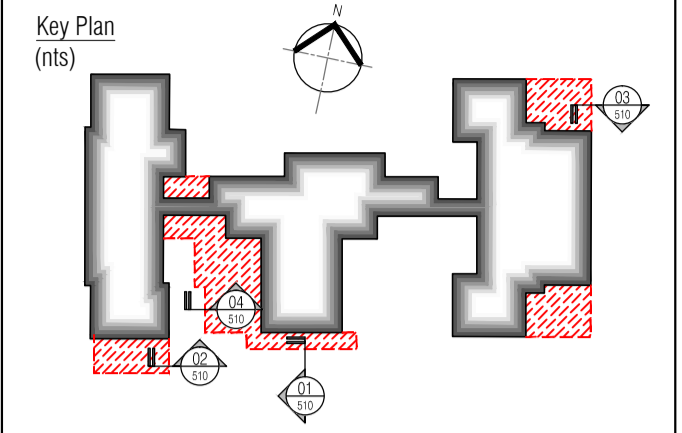


03 Typical Timber Box Brick Eaves Sprocket Roof Detail  
Scale: 1:5



02 Typical GRC Eaves Detail  
Scale: 1:5

NOTES: Do not scale this drawing. All dimensions to be checked on site prior to commencement or manufacture.



ISSUED FOR CONSTRUCTION

Rev	Date	By	Clk	Comment
C1	28.03.13	ES	JAS	Minor amendments - Issued for Construction
A2	09.10.12	RKC	JAS	Stage F issue
A1	21.08.12	RKC	JAS	Issued for Information

25 YEARS OF BRINGING IDEAS TO LIFE

**FRANKHAM**

Frankham Consultancy Group Limited

Frankham House Wootton Business Park  
Besselsleigh Road Wootton Abingdon  
Oxfordshire OX13 5FD  
T 01865 322500 F 01865 327393  
E enquire@frankham.com  
www.frankham.com

Client: **Leadbitter**  
CONSTRUCTION

Project Title: Whitehall Junior & Infant School  
Refurbishment, Extension and New Build  
Cowley Road  
London Borough of Hillingdon

Drawing Title: Existing Junior Building  
Typical Details  
Roof Eaves

Drawn by: RKC	Scale: 1:5@A1	Date: 21.08.12
Designed by: JAG	Checked by: JAS	Approved by: AGC

File Ref: J:\000001\NBS-HILLINGDON SCHOOL-1\DETAILS\ROOF EAVES\03\_01\_12\1869-A-510.dwg - REV C - 14.04.24.10.50.05

Drawing No. 611869-A-510	Rev. C1
-----------------------------	------------