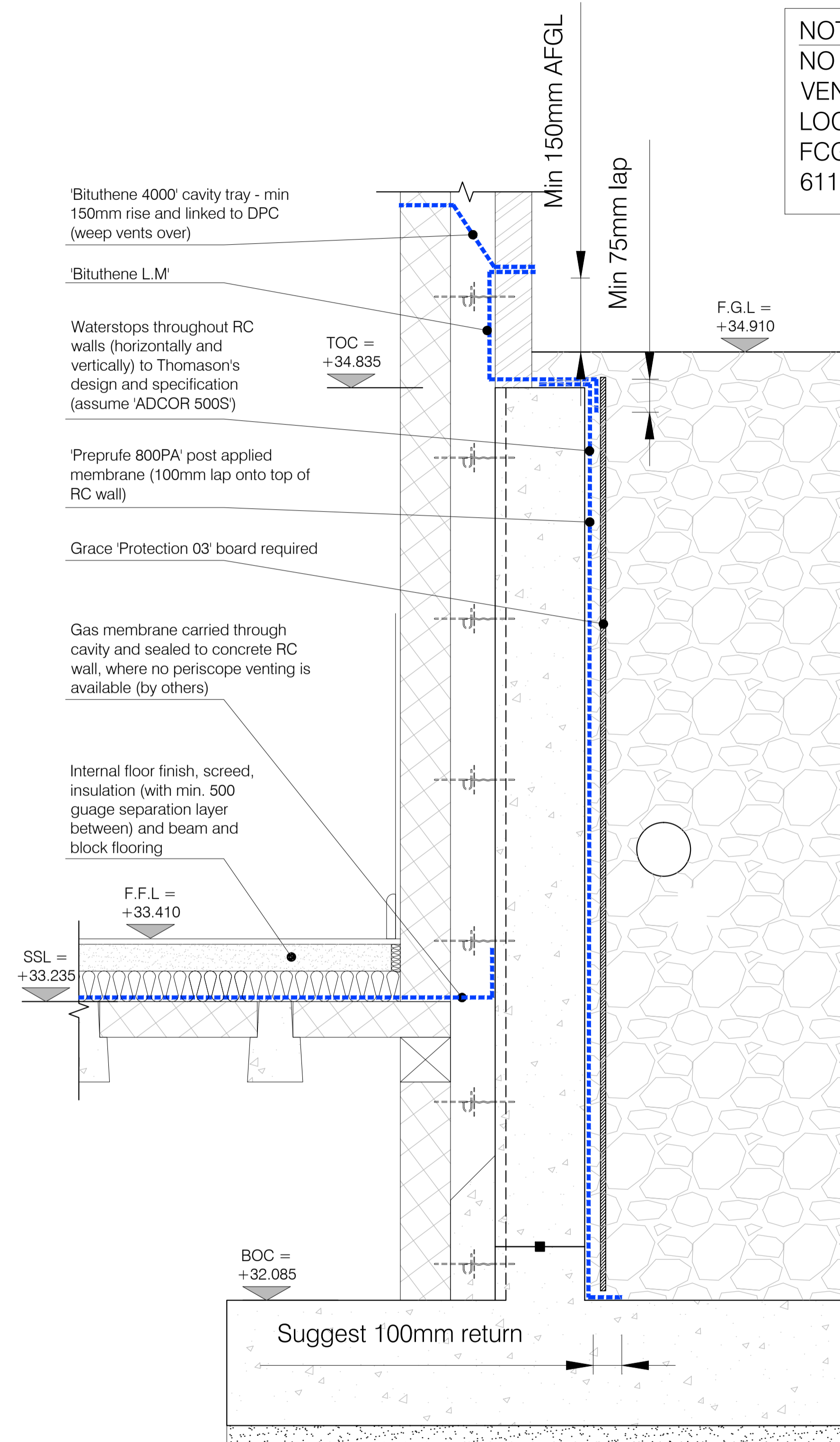


SECTION 1-1

(SCALE 1:10)



SECTION 2-2

(SCALE 1:10)

NOTE:-
NO SUB-FLOOR
VENTILATIONS IN SUCH
LOCATIONS (SEE ALSO
FCG DRAWING
611869-A-192)

AS BUILT
DRAWING

AB1 17.04.14 RKC AGC DRAWING ISSUED - AS BUILT

25 YEARS OF BRINGING IDEAS TO LIFE
ANNIVERSARY
1982-2007

FRANKHAM

Frankham Consultancy Group Limited
Frankham House Woolton Business Park
Besselsleigh Road Woolton Abingdon
Oxfordshire OX13 6FD
T 01865 322500 F 01865 327393
E enquire@frankham.com
www.frankham.com

Client
Leadbitter
CONSTRUCTION

Project Title
Whitehall Junior & Infant School
Refurbishment, Extension and New Build
Cowley Road
London Borough of Hillingdon

Drawing Title
Waterproofing
Details - Sheet 1 of 2

Drawn by: RKC	Scale: 1:10@A1	Date: 13.02.13
Designed by: FCG	Checked by: JAS	Approved by: AC

File Ref: J:\0000611869-HILLINGDON SCHOOL-11 WHITEHALL JUNIOR & INFANT SCHOOL-130 DETAIL 3.dwg 14.04.24.10.50.24

Drawing No. 611869-A-512	Rev. AB1
-----------------------------	-------------